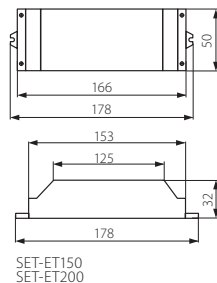
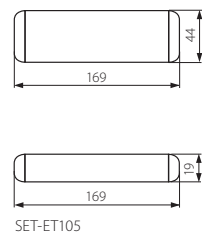
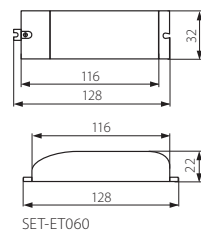





SET-ET

Zasilacz elektroniczny / Electronic transformer



- ▶ obudowa: tworzywo sztuczne
- ▶ casing: plastic

Kanlux	Kanlux		PRI	SEC	 [W]	 [g]
SET-ET060	01445	szary / grey	220-240V~; 50Hz	11,6V~; 4,9A; 60VA	60	84
SET-ET105	01446	szary / grey	220-240V~; 50Hz	11,6V~; 8,8A; 105VA	105	150
SET-ET150	01447	szary / grey	220-240V~; 50Hz	11,6V~; 12A; 150VA	150	284
SET-ET200	01448	szary / grey	220-240V~; 50Hz	11,6V~; 16A; 200VA	200	284



współczynnik mocy bierniej $\cos\phi$ wynoszący 0,99 / reactive power factor $\cos\phi$ is 0,99