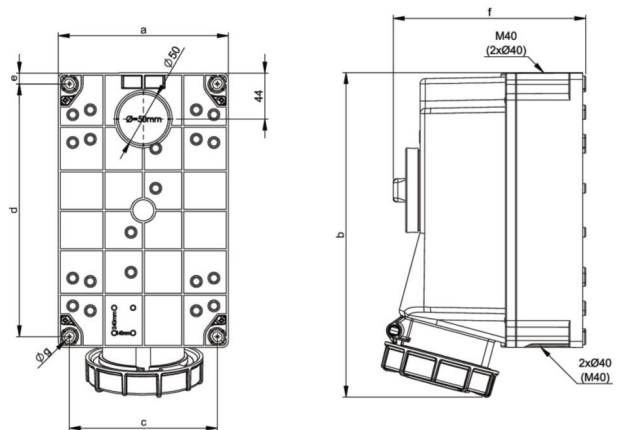


PCE data sheet

article#	75332-6
article description	CEE-switched interlocked socket 63A 3p 6h IP66/IP67
description long	CEE-switched interlocked socket 63A 3p 6h IP66/IP67 housing material: PC/ABS rated current: 63A number of poles: 3 (2P+PE) clock-position: 6h rated voltage/frequency: 200-250V~ / 50+60Hz contacts: brass, with lamellar spring (CuBe) connection technology: screw terminals wall mounting, mechanical interlock switch: ON/OFF PCE-Merz ML2-063; EN 60947-3; AC22A, 10kA cable entry: top, bottom or rear (incl. threaded blind cap) IP protection class: IP66/IP67
GTIN (EAN)	9003399068744
country of origin	AT
customs number	85366990
net weight	2.049 kg
packaging quantity	1

ETIM 7.0	EC001324
IEC-amperage	63 A
Number of poles	3
Voltage acc. EN 60309-2	230 V (50+60 Hz) blue
Clock hour position	6 h
Identification colour	Blue
Degree of protection (IP)	IP67
Switch	Mechanical locking
Material housing	Plastic
Model	Base unit and cover
Contact material	CuZn
Surface finish contacts	Nickel-plated

wire flexible	6-25 mm ²
wire solid	6-35 mm ²



www.manufacturer-safety.info