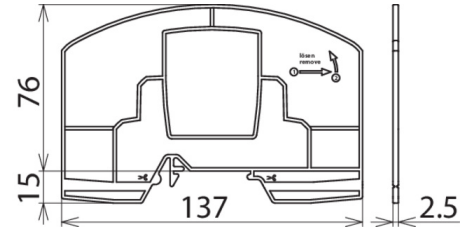
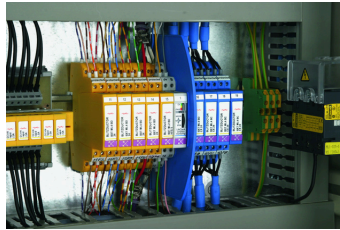


TW DRC MCM EX (910 697)

Allows non-intrinsically safe circuits to be placed directly next to Ex i circuits (space gain) • Increase of clearance to ≥ 50 mm in accordance with EN 60079-11 • Suitable for mounting rails with a height of 7.5 mm and 15 mm • Easy installation by simply snapping the partition onto a mounting rail



Figure without obligation



Dimension drawing of the partition

Special installation instructions have to be observed when using BLITZDUCTOR XT Ex (i) surge protective devices in intrinsically safe circuits. In accordance with EN 60079-11; 2007 (VDE 0170-7), a minimum distance (clearance) of ≥ 50 mm must be maintained between intrinsically and non-intrinsically safe circuits (connecting parts, e.g. terminals)!

When using the Ex i partition of type TW DRC MCM EX, this clearance is also maintained if the surge protective devices are arranged directly next to one other.

Ideally suited for use in conjunction with the DRC MCM XT for the condition monitoring of BXT modules. (1 pack = 2 pieces)

Type	TW DRC MCM EX
Part No.	910 697
Material	polyamide PA 6.6
Colour	blue
For mounting on	35 mm DIN rails according to EN 60715
Weight	31 g/PAK
Customs tariff number (Comb. Nomenclature EU)	39269097
GTIN	4013364123717
PU	1 PAK

We reserve the right to introduce changes in performance, configuration and technology, dimensions, weights and materials in the course of technical progress. The figures are shown without obligation.