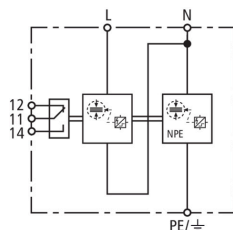


## DSH TT 2P 255 FM (941 115)

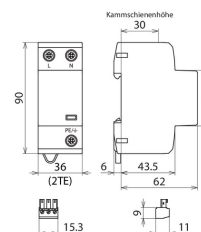
- Application-optimised and prewired spark-gap-based type 1 and type 2 combined lightning current and surge arrester
- Compact design due to space-saving spark gap technology with a width of only 1 module / pole
- Allows compact lightning equipotential bonding including protection of terminal equipment



Figure without obligation



Basic circuit diagram DSH TT 2P 255 FM



Dimension drawing DSH TT 2P 255 FM

Application-optimised and prewired combined lightning current and surge arrester for single-phase TT and TN-S systems (1+1 configuration); with floating remote signalling contact.

Type Part No.	DSH TT 2P 255 FM 941 115
SPD according to EN 61643-11 / IEC 61643-11	type 1 + type 2 / class I + class II
Energy coordination with terminal equipment ( $\leq 10$ m)	type 1 + type 2 + type 3
Nominal voltage (a.c.) ( $U_n$ )	230 V (50 / 60 Hz)
Max. continuous operating voltage (a.c.) ( $U_c$ )	255 V (50 / 60 Hz)
Lightning impulse current (10/350 $\mu$ s) [L+N-PE] ( $I_{total}$ )	25 kA
Specific energy [L+N-PE] (W/R)	156.25 kJ/ohms
Lightning impulse current (10/350 $\mu$ s) [L-N]/[N-PE] ( $I_{imp}$ )	12.5 / 25 kA
Specific energy [L-N]/[N-PE] (W/R)	39.06 / 156.25 kJ/ohms
Nominal discharge current (8/20 $\mu$ s) [L-N]/[N-PE] ( $I_n$ )	12.5 / 25 kA
Voltage protection level [L-N]/[N-PE] ( $U_p$ )	$\leq 1.5$ / $\leq 1.5$ kV
Follow current extinguishing capability [L-N]/[N-PE] ( $I_{fc}$ )	25 kA <sub>rms</sub> / 100 A <sub>rms</sub>
Follow current limitation / Selectivity	no tripping of a 32 A gG fuse up to 25 kA <sub>rms</sub> (prosp.)
Response time ( $t_A$ )	$\leq 100$ ns
Max. mains-side overcurrent protection	160 A gG
Temporary overvoltage (TOV) [L-N] ( $U_T$ ) – Characteristic	440 V / 120 min. – withstand
Temporary overvoltage (TOV) [N-PE] ( $U_T$ ) – Characteristic	1200 V / 200 ms – withstand
Operating temperature range ( $T_U$ )	-40 °C ... +80 °C
Operating state / fault indication	green / red
Number of ports	1
Cross-sectional area (L, N, PE, $\pm$ ) (min.)	1.5 mm <sup>2</sup> solid / flexible
Cross-sectional area (L, N, PE, $\pm$ ) (max.)	35 mm <sup>2</sup> stranded / 25 mm <sup>2</sup> flexible
For mounting on	35 mm DIN rails acc. to EN 60715
Enclosure material	thermoplastic, red, UL 94 V-0
Place of installation	indoor installation
Degree of protection	IP 20
Capacity	2 module(s), DIN 43880
Approvals	KEMA, VDE
Type of remote signalling contact	changeover contact
Switching capacity (a.c.)	250 V / 0.5 A
Switching capacity (d.c.)	250 V / 0.1 A; 125 V / 0.2 A; 75 V / 0.5 A
Cross-sectional area for remote signalling terminals	max. 1.5 mm <sup>2</sup> solid / flexible
Extended technical data:	-----
Voltage protection level [L-PE] ( $U_p$ )	2.0 kV
Weight	285 g
Customs tariff number (Comb. Nomenclature EU)	85363090
GTIN	4013364289208
PU	1 pc(s)

We reserve the right to introduce changes in performance, configuration and technology, dimensions, weights and materials in the course of technical progress. The figures are shown without obligation.