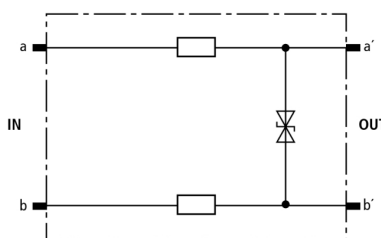


## DRL RD 110 (907 445)

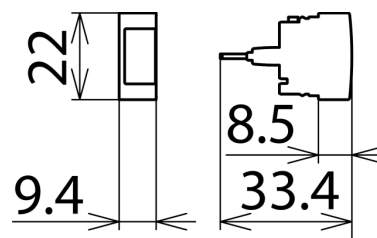
- Low voltage protection level line/line for protecting terminal equipment
- Energy-coordinated with DRL plug-in SPD block
- For installation in conformity with the lightning protection zone concept at the boundaries from 1 – 2 and higher



Figure without obligation




Basic circuit diagram DRL RD 110



Dimension drawing DRL RD 110

Protective plug (one pair), energy-coordinated with DRL plug-in SPD block, for use as single-stage protective device for terminal equipment. Low voltage protection level line-line for floating interfaces. To be mounted into EF 10 DRL. Installation recommended only in combination with DRL plug-in SPD block.

| Type   | DRL RD 110  |
|--|---|
| Part No.   | 907 445   |
| SPD class  |  |
| Nominal voltage ( $U_N$ )  | 110 V   |
| Max. continuous operating voltage (d.c.) ( $U_C$ )   | 180 V   |
| Max. continuous operating voltage (a.c.) ( $U_C$ )   | 127 V   |
| Nominal current ( $I_N$ )  | 0.4 A   |
| D1 Total lightning impulse current (10/350 $\mu$ s) in combination with DRL 10 B... ( $I_{imp}$ )    | 5 kA  |
| D1 Lightning impulse current (10/350 $\mu$ s) per line in combination with DRL 10 B... ( $I_{imp}$ ) | 2.5 kA  |
| C2 Total nominal discharge current (8/20 $\mu$ s) in combination with DRL 10 B... ( $I_n$ )          | 10 kA   |
| C2 Nominal discharge current (8/20 $\mu$ s) per line in combination with DRL 10 B... ( $I_n$ )       | 5 kA  |
| C1 Nominal discharge current (8/20 $\mu$ s) per line without DRL 10 B... ( $I_n$ )                   | 0.25 kA   |
| Voltage protection level line-PG for $I_{imp}$ D1 in combination with DRL 10 B... ( $U_P$ )          | $\leq 500$ V  |
| Voltage protection level line-line at 1 kV/ $\mu$ s C3 ( $U_P$ )                                     | $\leq 250$ V  |
| Series resistance per line   | 4.7 ohms  |
| Cut-off frequency line-line ( $f_C$ )  | 20 MHz  |
| Capacitance line-line (C)  | $\leq 200$ pF   |
| Operating temperature range ( $T_U$ )  | -40 °C ... +80 °C   |
| Degree of protection   | IP 20 (when plugged in)   |
| Plugs into   | LSA disconnection block 2/10 or DRL 10 B ... plug-in SPD block                      |
| Enclosure material   | polyamide PA 6.6  |
| Colour   | yellow  |
| Test standards   | IEC 61643-21 / EN 61643-21  |
| Weight   | 3 g   |
| Customs tariff number (Comb. Nomenclature EU)  | 85363010  |
| GTIN   | 4013364118461   |
| PU   | 10 pc(s)  |

We reserve the right to introduce changes in performance, configuration and technology, dimensions, weights and materials in the course of technical progress. The figures are shown without obligation.