



PV 6.22 FRM10X40 STBLANK (306 121)

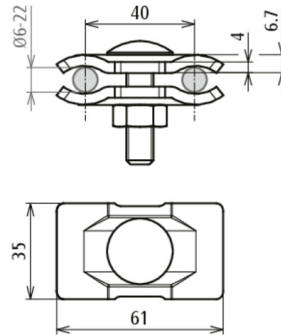
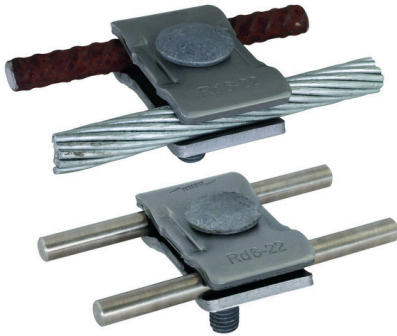
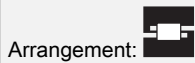


Figure without obligation

for connecting two conductors in parallel arrangement with one screw.



Type	PV 6.22 FRM10X40 STBLANK
Part No.	306 121
Material of clamp	St/bare
Clamping range Rd / Rd	6-22 / 6-22 mm
Screw	M10 x 40 mm
Material of screw / nut	St/tZn
Lightning current carrying capability (10/350 µs)	^{*)}
Standard	EN 62561-1
Short-circuit current (AC 50 Hz / DC) (1 s; ≤ 300 °C)	6.1 kA
Material thickness	4 mm
Weight	161 g
Customs tariff number (Comb. Nomenclature EU)	85359000
GTIN	4013364284920
PU	50 pc(s)

^{*)}For exact classification, see test certificate.

We reserve the right to introduce changes in performance, configuration and technology, dimensions, weights and materials in the course of technical progress. The figures are shown without obligation.