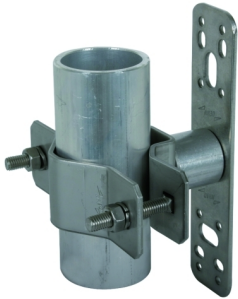


**WB D40.50 SE WA46 V2A (105 342)**



Type	WB D40.50 SE WA46 V2A
Part No.	105 342
Material of bracket	StSt
Fixing	[8x] Ø5.1 / [4x] 7 x 10 / [2x] 11 x 20mm
Clamping range for supporting tube	40-50mm
Distance from wall	46mm
Material of screw	StSt
Weight	514 g
Customs tariff number (Comb. Nomenclature VAE)	85389099
GTIN	4013364111141
PU	1 pc(s)

