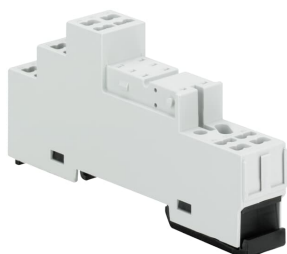


PRODUCT-DETAILS

CR-PLC

CR-PLC Logical socket for 1c/o or 2c/o CR-P relays



General Information

Extended Product Type	CR-PLC
Product ID	1SVR405650R0200
EAN	4013614528583
Catalog Description	CR-PLC Logical socket for 1c/o or 2c/o CR-P relays
Long Description	The CR-PLC socket is from the CR-P (pcb) relay range. The logical socket is suitable for CR-P relays with 1 or 2 c/o (SPDT) output contacts. The socket has spring connection terminals. Pluggable function modules, holder and marker are available as accessories.

Ordering

EAN	4013614528583
Minimum Order Quantity	10 piece
Customs Tariff Number	85366990

Popular Downloads

Data Sheet, Technical Information	2CDC110004C0210_05
Instructions and Manuals	1SVC405650M9030

Dimensions

Product Net Width	16 mm
Product Net Height	45.2 mm
Product Net Depth / Length	97 mm
Product Net Weight	0.042 kg

Technical

Function	Accessory for interface relays CR-P
Sub-Function	Socket for PCB relays
Sub-Function 2	Logical socket for pcb relay 1 c/o or 2 c/o
Rated Operational Voltage	250 V
Output	none
Terminal Type	Spring Terminals
Rated Operational Current AC-12 (I _a)	(230 V) 2 A
Rated Insulation Voltage (U _i)	5 V
Mounting Position	1
Standards	CAN/CSA C22.2 No.14 IEC/EN 63000 IEC/EN 61984 UL 508

Technical UL/CSA

Connecting Capacity Main Circuit UL/CSA	Flexible with Ferrule 2x 16 AWG Rigid 2x 24-16 AWG Stranded 2 x 24-16 AWG
Flammability According to UL94	V-0

Environmental

Ambient Air Temperature	Operation -40 ... +70 °C Storage -40 ... +70 °C
Maximum Operating Altitude Permissible	2000 m

Material Compliance

RoHS Information	1SVD982020-0001
RoHS Status	Following EU Directive 2011/65/EU

Circular Value

Environmental Information	1SAC200048H0009
---------------------------	-----------------

Certificates and Declarations

CSA Certificate	CSA_262671_2785566
cURus Certificate	cURus508_E244328
Declaration of Conformity - CE	1SVD982020-0001
Declaration of Conformity - UKCA	1SVD982020-1000
EAC Certificate	EAC RU C-DE.ME77.B.00446-19

Container Information

Package Level 1 Units	box 10 piece
Package Level 1 Width	100 mm
Package Level 1 Depth / Length	82 mm
Package Level 1 Height	84 mm
Package Level 1 Gross Weight	0.422 kg
Package Level 1 EAN	4013614380174

Classifications

Object Classification Code	K
ETIM 7	EC001456 - Relay socket
ETIM 8	EC001456 - Relay socket
ETIM 9	EC001456 - Relay socket
eClass	V11.0 : 27371603
UNSPSC	39122335

Categories

Low Voltage Products and Systems → Control Products → Electronic Relays and Controls → Interface Relays and Optocouplers

