

Opis produktu

# 2533-84

## Cover plate Bore hole 1 gang studio white - 63x63



### Ogólne informacje

|                  |  |
|------------------|--|
| Typ produktu     | 2533-84  |
| Kod zamówieniowy | 2CKA001724A4256  |
| Numer EAN        | 4011395065679  |
| Opis katalogowy  | Cover plate Bore hole 1 gang studio white - 63x63  |
| Opis             | With screw-type terminal. Fixed with central locknut. As cover for pilot devices with a diameter of 22.5 mm Without claws. |

### Installation

|                          |                                     |
|--------------------------|-------------------------------------|
| Instrukcje i podręczniki | No document needed                  |
| Typ montażu              | Flush Mounted                       |
| Rodzaj mocowania         | Mounting with Screw<br>Without Claw |

### Dane techniczne

|                                      |                     |
|--------------------------------------|---------------------|
| Arkusz danych, informacja techniczna | No document needed  |
| Zastosowanie                         | Bore hole           |
| Funkcja                              | with mounting plate |

|                     |                          |
|---------------------|--------------------------|
| Rodzaj wyświetlacza | Without indication field |
| Orientacja wylotu   | Straight                 |

## Design

|                     |   |
|---------------------|---|
| Design Range        | 63x63<br>future linear<br>future<br>Busch-axcent<br>Busch-axcent pur<br>solo<br>carat |
| Wykończenie pokrywy | Untreated<br>Glossy   |
| Material            | Thermoplastic   |
| Kolor RAL           | RAL 9016 - Traffic White  |
| Kolor               | studio white  |

## Material Compliance

|                           |  |
|---------------------------|--|
| Dane RoHS                 | 2CKA200000E1281  |
| Status RoHS               | Following EU Directive 2011/65/EU and Amendment 2015/863 July 22, 2019 |
| Deklaracja REACH          | 2CKA309999E9999  |
| REACH Information         | False - does not contains substances > 0.1 mass percentage             |
| Szablon raportowania CMRT | 9AKK108468A3363  |

## Normy środowiskowe

|                 |      |
|-----------------|------|
| Stopień ochrony | IP20 |
|-----------------|------|

## Wymiary

|                                      |                 |
|--------------------------------------|-----------------|
| Szerokość netto                      | 71 mm           |
| Wysokość netto                       | 71 mm           |
| Głębokość / długość netto            | 17.8 mm         |
| Masa netto                           | 31 g            |
| Głębokość zabudowy (t <sub>2</sub> ) | 32 mm           |
| Schemat wymiarów                     | 2CKA000097E0250 |

## Certyfikaty i deklaracje (Numer dokumentu)

|                         |                 |
|-------------------------|-----------------|
| Deklaracja zgodności UE | 2CKA200000E1281 |
|-------------------------|-----------------|

## Klasyfikacje

|                |  |
|----------------|--|
| ETIM 9         | EC000018 - Insert/cover for communication technology |
| eClass         | V11.0 : 27144049                                     |
| Kategoria WEEE | Product Not in WEEE Scope                            |

## Accessories

| Identifier      | Description  | Type             | Quantity | Unit Of Measure |
|-----------------|--|------------------|----------|-----------------|
| 2CKA001754A4240 | Cover frame 1gang anthracite - future linear       | 1721-181K        | 1        | sztuka          |
| 2CKA001754A4168 | Cover frame 1gang ivory white - future linear      | 1721-182         | 1        | sztuka          |
| 2CKA001754A4506 | Cover frame 1gang ivory white - future linear      | 1721-182K-500    | 1        | sztuka          |
| 2CKA001754A4529 | Cover frame 1gang aluminium silver - future linear | 1721-183K-500    | 1        | sztuka          |
| 2CKA001754A4173 | Cover frame 1gang studio white - future linear     | 1721-184         | 1        | sztuka          |
| 2CKA001754A4527 | Cover frame 1gang studio white - future linear     | 1721-184 NSK-500 | 1        | sztuka          |
| 2CKA001754A4504 | Cover frame 1gang studio white - future linear     | 1721-184-500     | 1        | sztuka          |
| 2CKA001754A4498 | Cover frame 1gang studio white - future linear     | 1721-184K-500    | 1        | sztuka          |
| 2CKA001754A4775 | Cover frame 1gang glass purple - Busch-axcent pur  | 1721-223         | 1        | sztuka          |
| 2CKA001754A4760 | Cover frame 1gang glass sun - Busch-axcent pur     | 1721-225         | 1        | sztuka          |
| 2CKA001754A4770 | Cover frame 1gang glass avocado - Busch-axcent pur | 1721-226         | 1        | sztuka          |
| 2CKA001754A4765 | Cover frame 1gang glass coral - Busch-axcent pur   | 1721-227         | 1        | sztuka          |
| 2CKA001754A4755 | Cover frame 1gang glass ocean - Busch-axcent pur   | 1721-228         | 1        | sztuka          |
| 2CKA001754A4780 | Cover frame 1gang glass oyster - Busch-axcent pur  | 1721-229         | 1        | sztuka          |
| 2CKA001754A4790 | Cover frame 1gang paper brown - Busch-axcent pur   | 1721-243         | 1        | sztuka          |
| 2CKA001754A4800 | Cover frame 1gang glass black - Busch-axcent pur   | 1721-245         | 1        | sztuka          |
| 2CKA001754A4785 | Cover frame 1gang paper blue - Busch-axcent pur    | 1721-248         | 1        | sztuka          |
| 2CKA001754A4688 | Cover frame 1gang platinum - Busch-axcent pur      | 1721-270-500     | 1        | sztuka          |
| 2CKA001754A4708 | Cover frame 1gang black matt - Busch-axcent pur    | 1721-275-500     | 1        | sztuka          |
| 2CKA001754A4698 | Cover frame 1gang titanium - Busch-axcent pur      | 1721-276-500     | 1        | sztuka          |
| 2CKA001754A4437 | Cover frame 1gang white glass - Busch-axcent pur   | 1721-280         | 1        | sztuka          |
| 2CKA001754A4409 | Cover frame 1gang black - Busch-axcent             | 1721-281         | 1        | sztuka          |
| 2CKA001754A4331 | Cover frame 1gang studio white - Busch-axcent      | 1721-284         | 1        | sztuka          |
| 2CKA001754A4334 | Cover frame 1gang yellow - Busch-axcent            | 1721-285         | 1        | sztuka          |
| 2CKA001754A4337 | Cover frame 1gang green - Busch-axcent             | 1721-286         | 1        | sztuka          |
| 2CKA001754A4340 | Cover frame 1gang red - Busch-axcent               | 1721-287         | 1        | sztuka          |
| 2CKA001754A4343 | Cover frame 1gang blue - Busch-axcent              | 1721-288         | 1        | sztuka          |
| 2CKA001754A4805 | Cover frame 1gang slate grey - Busch-axcent pur    | 1721-290         | 1        | sztuka          |
| 2CKA001754A4471 | Cover frame 1gang entrée grey - Busch-axcent       | 1721-291-500     | 1        | sztuka          |
| 2CKA001754A4795 | Cover frame 1gang concrete grey - Busch-axcent pur | 1721-298         | 1        | sztuka          |
| 2CKA001754A4535 | Cover frame 1gang chrome - solo                    | 1721-80-500      | 1        | sztuka          |
| 2CKA001754A4538 | Cover frame 1gang chrome gloss - solo              | 1721-80G-500     | 1        | sztuka          |
| 2CKA001754A4442 | Cover frame 1gang white glass - carat              | 1721-811         | 1        | sztuka          |
| 2CKA001754A4820 | Cover frame 1gang porcelain anthracite - carat     | 1721-815         | 1        | sztuka          |
| 2CKA001754A4258 | Cover frame 1gang bronze - carat                   | 1721-821         | 1        | sztuka          |
| 2CKA001754A4356 | Cover frame 1gang gold - carat                     | 1721-823-101     | 1        | sztuka          |
| 2CKA001754A4322 | Cover frame 1gang glass black - carat              | 1721-825         | 1        | sztuka          |
| 2CKA001754A4360 | Cover frame 1gang chrome - carat                   | 1721-826-101     | 1        | sztuka          |
| 2CKA001754A4605 | Cover frame 1gang anthracite - Busch-Dynasty       | 1721-831-500     | 1        | sztuka          |
| 2CKA001754A4600 | Cover frame 1gang ivory white - Busch-Dynasty      | 1721-832-500     | 1        | sztuka          |

|                 |  |                  |   |        |
|-----------------|--|------------------|---|--------|
| 2CKA001754A4575 | Cover frame 1gang polished brass decor anthracite - Busch-Dynasty  | 1721-833-500     | 1 | sztuka |
| 2CKA001754A4565 | Cover frame 1gang polished brass anthracite - Busch-Dynasty        | 1721-835-500     | 1 | sztuka |
| 2CKA001754A4570 | Cover frame 1gang polished brass decor ivory white - Busch-Dynasty | 1721-836-500     | 1 | sztuka |
| 2CKA001754A4560 | Cover frame 1gang polished brass ivory white - Busch-Dynasty       | 1721-838-500     | 1 | sztuka |
| 2CKA001754A4595 | Cover frame 1gang antique brass decor anthracite - Busch-Dynasty   | 1721-843-500     | 1 | sztuka |
| 2CKA001754A4536 | Cover frame 1gang studio white - solo                              | 1721-84-500      | 1 | sztuka |
| 2CKA001754A4585 | Cover frame 1gang antique brass anthracite - Busch-Dynasty         | 1721-845-500     | 1 | sztuka |
| 2CKA001754A4590 | Cover frame 1gang antique brass decor ivory white - Busch-Dynasty  | 1721-846-500     | 1 | sztuka |
| 2CKA001754A4580 | Cover frame 1gang antique brass ivory white - Busch-Dynasty        | 1721-848-500     | 1 | sztuka |
| 2CKA001754A4254 | Cover frame 1gang stainless steel - carat                          | 1721-860         | 1 | sztuka |
| 2CKA001754A4500 | Cover frame 1gang stainless steel - Pure Stainless Steel           | 1721-866K-500    | 1 | sztuka |
| 2CKA001754A4531 | Cover frame 1gang studio white matt - future linear                | 1721-884K-500    | 1 | sztuka |
| 2CKA001754A4532 | Cover frame 1gang black matt - future linear                       | 1721-885K-500    | 1 | sztuka |
| 2CKA001754A4714 | Cover frame 2gang red - future linear                              | 1722-12-182K-101 | 1 | sztuka |
| 2CKA001754A4241 | Cover frame 2gang anthracite - future linear                       | 1722-181K        | 1 | sztuka |
| 2CKA001754A4169 | Cover frame 2gang ivory white - future linear                      | 1722-182         | 1 | sztuka |
| 2CKA001754A4231 | Cover frame 2gang ivory white - future linear                      | 1722-182K        | 1 | sztuka |
| 2CKA001754A4530 | Cover frame 2gang aluminium silver - future linear                 | 1722-183K-500    | 1 | sztuka |
| 2CKA001754A4174 | Cover frame 2gang studio white - future linear                     | 1722-184         | 1 | sztuka |
| 2CKA001754A4508 | Cover frame 2gang studio white - future linear                     | 1722-184-500     | 1 | sztuka |
| 2CKA001754A4499 | Cover frame 2gang studio white - future linear                     | 1722-184K-500    | 1 | sztuka |
| 2CKA001754A4776 | Cover frame 2gang glass purple - Busch-axcent pur                  | 1722-223         | 1 | sztuka |
| 2CKA001754A4761 | Cover frame 2gang glass sun - Busch-axcent pur                     | 1722-225         | 1 | sztuka |
| 2CKA001754A4771 | Cover frame 2gang glass avocado - Busch-axcent pur                 | 1722-226         | 1 | sztuka |
| 2CKA001754A4766 | Cover frame 2gang glass coral - Busch-axcent pur                   | 1722-227         | 1 | sztuka |
| 2CKA001754A4756 | Cover frame 2gang glass ocean - Busch-axcent pur                   | 1722-228         | 1 | sztuka |
| 2CKA001754A4781 | Cover frame 2gang glass oyster - Busch-axcent pur                  | 1722-229         | 1 | sztuka |
| 2CKA001754A4791 | Cover frame 2gang paper brown - Busch-axcent pur                   | 1722-243         | 1 | sztuka |
| 2CKA001754A4801 | Cover frame 2gang glass black - Busch-axcent pur                   | 1722-245         | 1 | sztuka |
| 2CKA001754A4786 | Cover frame 2gang paper blue - Busch-axcent pur                    | 1722-248         | 1 | sztuka |
| 2CKA001754A4689 | Cover frame 2gang platinum - Busch-axcent pur                      | 1722-270-500     | 1 | sztuka |
| 2CKA001754A4709 | Cover frame 2gang black matt - Busch-axcent pur                    | 1722-275-500     | 1 | sztuka |
| 2CKA001754A4699 | Cover frame 2gang titanium - Busch-axcent pur                      | 1722-276-500     | 1 | sztuka |
| 2CKA001754A4438 | Cover frame 2gang white glass - Busch-axcent pur                   | 1722-280         | 1 | sztuka |
| 2CKA001754A4410 | Cover frame 2gang black - Busch-axcent                             | 1722-281         | 1 | sztuka |
| 2CKA001754A4332 | Cover frame 2gang studio white - Busch-axcent                      | 1722-284         | 1 | sztuka |
| 2CKA001754A4335 | Cover frame 2gang yellow - Busch-axcent                            | 1722-285         | 1 | sztuka |
| 2CKA001754A4338 | Cover frame 2gang green - Busch-axcent                             | 1722-286         | 1 | sztuka |

|                 |   |               |   |        |
|-----------------|---|---------------|---|--------|
| 2CKA001754A4341 | Cover frame 2gang red - Busch-axcent  | 1722-287      | 1 | sztuka |
| 2CKA001754A4344 | Cover frame 2gang blue - Busch-axcent   | 1722-288      | 1 | sztuka |
| 2CKA001754A4806 | Cover frame 2gang slate grey - Busch-axcent pur                               | 1722-290      | 1 | sztuka |
| 2CKA001754A4472 | Cover frame 2gang entrée grey - Busch-axcent                                  | 1722-291-500  | 1 | sztuka |
| 2CKA001754A4796 | Cover frame 2gang concrete grey - Busch-axcent pur                            | 1722-298      | 1 | sztuka |
| 2CKA001754A4482 | Cover frame 2gang maison-beige - Busch-axcent                                 | 1722-299-500  | 1 | sztuka |
| 2CKA001754A4537 | Cover frame 2gang chrome - solo   | 1722-80-500   | 1 | sztuka |
| 2CKA001754A4327 | Cover frame 2gang chrome gloss - solo   | 1722-80G      | 1 | sztuka |
| 2CKA001754A4443 | Cover frame 2gang white glass - carat   | 1722-811      | 1 | sztuka |
| 2CKA001754A4821 | Cover frame 2gang porcelain anthracite - carat                                | 1722-815      | 1 | sztuka |
| 2CKA001754A4259 | Cover frame 2gang bronze - carat  | 1722-821      | 1 | sztuka |
| 2CKA001754A4357 | Cover frame 2gang gold - carat  | 1722-823-101  | 1 | sztuka |
| 2CKA001754A4323 | Cover frame 2gang glass black - carat   | 1722-825      | 1 | sztuka |
| 2CKA001754A4361 | Cover frame 2gang chrome - carat  | 1722-826-101  | 1 | sztuka |
| 2CKA001754A4606 | Cover frame 2gang anthracite - Busch-Dynasty                                  | 1722-831-500  | 1 | sztuka |
| 2CKA001754A4601 | Cover frame 2gang ivory white - Busch-Dynasty                                 | 1722-832-500  | 1 | sztuka |
| 2CKA001754A4576 | Cover frame 2gang polished brass decor anthracite - Busch-Dynasty             | 1722-833-500  | 1 | sztuka |
| 2CKA001754A4566 | Cover frame 2gang polished brass anthracite - Busch-Dynasty                   | 1722-835-500  | 1 | sztuka |
| 2CKA001754A4571 | Cover frame 2gang polished brass decor ivory white - Busch-Dynasty            | 1722-836-500  | 1 | sztuka |
| 2CKA001754A4561 | Cover frame 2gang polished brass ivory white - Busch-Dynasty                  | 1722-838-500  | 1 | sztuka |
| 2CKA001754A4596 | Cover frame 2gang antique brass decor anthracite - Busch-Dynasty              | 1722-843-500  | 1 | sztuka |
| 2CKA001754A4539 | Cover frame 2gang studio white - solo   | 1722-84-500   | 1 | sztuka |
| 2CKA001754A4586 | Cover frame 2gang antique brass anthracite - Busch-Dynasty                    | 1722-845-500  | 1 | sztuka |
| 2CKA001754A4591 | Cover frame 2gang antique brass decor ivory white - Busch-Dynasty             | 1722-846-500  | 1 | sztuka |
| 2CKA001754A4581 | Cover frame 2gang antique brass ivory white - Busch-Dynasty                   | 1722-848-500  | 1 | sztuka |
| 2CKA001754A4255 | Cover frame 2gang stainless steel - carat                                     | 1722-860      | 1 | sztuka |
| 2CKA001754A4501 | Cover frame 2gang stainless steel - Pure Stainless Steel                      | 1722-866K-500 | 1 | sztuka |
| 2CKA001754A4415 | Cover frame 2gang studio white matt - future linear                           | 1722-884K     | 1 | sztuka |
| 2CKA001754A4534 | Cover frame 2gang black matt - future linear                                  | 1722-885K-500 | 1 | sztuka |
| 2CKA001754A4242 | Cover frame 3gang anthracite - future linear                                  | 1723-181K     | 1 | sztuka |
| 2CKA001754A4170 | Cover frame 3gang ivory white - future linear                                 | 1723-182      | 1 | sztuka |
| 2CKA001754A4232 | Cover frame 3gang ivory white - future linear                                 | 1723-182K     | 1 | sztuka |
| 2CKA001754A4533 | Cover frame 3gang aluminium silver - future linear                            | 1723-183K-500 | 1 | sztuka |
| 2CKA001754A4175 | Cover frame 3gang studio white - future linear                                | 1723-184      | 1 | sztuka |
| 2CKA001754A4366 | Cover frame with labelling field, vertical 3gang studio white - future linear | 1723-184 NSK  | 1 | sztuka |
| 2CKA001754A4502 | Cover frame 3gang studio white - future linear                                | 1723-184K-500 | 1 | sztuka |
| 2CKA001754A4777 | Cover frame 3gang glass purple - Busch-axcent pur                             | 1723-223      | 1 | sztuka |
| 2CKA001754A4762 | Cover frame 3gang glass sun - Busch-axcent pur                                | 1723-225      | 1 | sztuka |
| 2CKA001754A4772 | Cover frame 3gang glass avocado - Busch-axcent pur                            | 1723-226      | 1 | sztuka |
| 2CKA001754A4767 | Cover frame 3gang glass coral - Busch-axcent pur                              | 1723-227      | 1 | sztuka |

|                 |  |              |   |        |
|-----------------|--|--------------|---|--------|
| 2CKA001754A4757 | Cover frame 3gang glass ocean - Busch-axcent pur                   | 1723-228     | 1 | sztuka |
| 2CKA001754A4792 | Cover frame 3gang paper brown - Busch-axcent pur                   | 1723-243     | 1 | sztuka |
| 2CKA001754A4802 | Cover frame 3gang glass black - Busch-axcent pur                   | 1723-245     | 1 | sztuka |
| 2CKA001754A4787 | Cover frame 3gang paper blue - Busch-axcent pur                    | 1723-248     | 1 | sztuka |
| 2CKA001754A4690 | Cover frame 3gang platinum - Busch-axcent pur                      | 1723-270-500 | 1 | sztuka |
| 2CKA001754A4710 | Cover frame 3gang black matt - Busch-axcent pur                    | 1723-275-500 | 1 | sztuka |
| 2CKA001754A4700 | Cover frame 3gang titanium - Busch-axcent pur                      | 1723-276-500 | 1 | sztuka |
| 2CKA001754A4439 | Cover frame 3gang white glass - Busch-axcent pur                   | 1723-280     | 1 | sztuka |
| 2CKA001754A4411 | Cover frame 3gang black - Busch-axcent                             | 1723-281     | 1 | sztuka |
| 2CKA001754A4333 | Cover frame 3gang studio white - Busch-axcent                      | 1723-284     | 1 | sztuka |
| 2CKA001754A4336 | Cover frame 3gang yellow - Busch-axcent                            | 1723-285     | 1 | sztuka |
| 2CKA001754A4339 | Cover frame 3gang green - Busch-axcent                             | 1723-286     | 1 | sztuka |
| 2CKA001754A4342 | Cover frame 3gang red - Busch-axcent                               | 1723-287     | 1 | sztuka |
| 2CKA001754A4345 | Cover frame 3gang blue - Busch-axcent                              | 1723-288     | 1 | sztuka |
| 2CKA001754A4807 | Cover frame 3gang slate grey - Busch-axcent pur                    | 1723-290     | 1 | sztuka |
| 2CKA001754A4473 | Cover frame 3gang entrée grey - Busch-axcent                       | 1723-291-500 | 1 | sztuka |
| 2CKA001754A4797 | Cover frame 3gang concrete grey - Busch-axcent pur                 | 1723-298     | 1 | sztuka |
| 2CKA001754A4483 | Cover frame 3gang maison-beige - Busch-axcent                      | 1723-299-500 | 1 | sztuka |
| 2CKA001754A4540 | Cover frame 3gang chrome - solo                                    | 1723-80-500  | 1 | sztuka |
| 2CKA001754A4328 | Cover frame 3gang chrome gloss - solo                              | 1723-80G     | 1 | sztuka |
| 2CKA001754A4444 | Cover frame 3gang white glass - carat                              | 1723-811     | 1 | sztuka |
| 2CKA001754A4260 | Cover frame 3gang bronze - carat                                   | 1723-821     | 1 | sztuka |
| 2CKA001754A4358 | Cover frame 3gang gold - carat                                     | 1723-823-101 | 1 | sztuka |
| 2CKA001754A4324 | Cover frame 3gang glass black - carat                              | 1723-825     | 1 | sztuka |
| 2CKA001754A4362 | Cover frame 3gang chrome - carat                                   | 1723-826-101 | 1 | sztuka |
| 2CKA001754A4607 | Cover frame 3gang anthracite - Busch-Dynasty                       | 1723-831-500 | 1 | sztuka |
| 2CKA001754A4602 | Cover frame 3gang ivory white - Busch-Dynasty                      | 1723-832-500 | 1 | sztuka |
| 2CKA001754A4577 | Cover frame 3gang polished brass decor anthracite - Busch-Dynasty  | 1723-833-500 | 1 | sztuka |
| 2CKA001754A4567 | Cover frame 3gang polished brass anthracite - Busch-Dynasty        | 1723-835-500 | 1 | sztuka |
| 2CKA001754A4572 | Cover frame 3gang polished brass decor ivory white - Busch-Dynasty | 1723-836-500 | 1 | sztuka |
| 2CKA001754A4562 | Cover frame 3gang polished brass ivory white - Busch-Dynasty       | 1723-838-500 | 1 | sztuka |
| 2CKA001754A4597 | Cover frame 3gang antique brass decor anthracite - Busch-Dynasty   | 1723-843-500 | 1 | sztuka |
| 2CKA001754A4541 | Cover frame 3gang studio white - solo                              | 1723-84-500  | 1 | sztuka |
| 2CKA001754A4587 | Cover frame 3gang antique brass anthracite - Busch-Dynasty         | 1723-845-500 | 1 | sztuka |
| 2CKA001754A4592 | Cover frame 3gang antique brass decor ivory white - Busch-Dynasty  | 1723-846-500 | 1 | sztuka |
| 2CKA001754A4582 | Cover frame 3gang antique brass ivory white - Busch-Dynasty        | 1723-848-500 | 1 | sztuka |
| 2CKA001754A4256 | Cover frame 3gang stainless steel - carat                          | 1723-860     | 1 | sztuka |
| 2CKA001754A4319 | Cover frame 3gang stainless steel - Pure Stainless Steel           | 1723-866K    | 1 | sztuka |
| 2CKA001754A4416 | Cover frame 3gang studio white matt - future linear                | 1723-884K    | 1 | sztuka |
| 2CKA001754A4421 | Cover frame 3gang black matt - future linear                       | 1723-885K    | 1 | sztuka |

|                 |   |              |   |        |
|-----------------|---|--------------|---|--------|
| 2CKA001754A4243 | Cover frame 4gang anthracite - future linear                                  | 1724-181K    | 1 | sztuka |
| 2CKA001754A4171 | Cover frame 4gang ivory white - future linear                                 | 1724-182     | 1 | sztuka |
| 2CKA001754A4233 | Cover frame 4gang ivory white - future linear                                 | 1724-182K    | 1 | sztuka |
| 2CKA001754A4309 | Cover frame 4gang aluminium silver - future linear                            | 1724-183K    | 1 | sztuka |
| 2CKA001754A4176 | Cover frame 4gang studio white - future linear                                | 1724-184     | 1 | sztuka |
| 2CKA001754A4367 | Cover frame with labelling field, vertical 4gang studio white - future linear | 1724-184 NSK | 1 | sztuka |
| 2CKA001754A4238 | Cover frame 4gang studio white - future linear                                | 1724-184K    | 1 | sztuka |
| 2CKA001754A4778 | Cover frame 4gang glass purple - Busch-axcent pur                             | 1724-223     | 1 | sztuka |
| 2CKA001754A4763 | Cover frame 4gang glass sun - Busch-axcent pur                                | 1724-225     | 1 | sztuka |
| 2CKA001754A4768 | Cover frame 4gang glass coral - Busch-axcent pur                              | 1724-227     | 1 | sztuka |
| 2CKA001754A4793 | Cover frame 4gang paper brown - Busch-axcent pur                              | 1724-243     | 1 | sztuka |
| 2CKA001754A4803 | Cover frame 4gang glass black - Busch-axcent pur                              | 1724-245     | 1 | sztuka |
| 2CKA001754A4788 | Cover frame 4gang paper blue - Busch-axcent pur                               | 1724-248     | 1 | sztuka |
| 2CKA001754A4691 | Cover frame 4gang platinum - Busch-axcent pur                                 | 1724-270-500 | 1 | sztuka |
| 2CKA001754A4711 | Cover frame 4gang black matt - Busch-axcent pur                               | 1724-275-500 | 1 | sztuka |
| 2CKA001754A4701 | Cover frame 4gang titanium - Busch-axcent pur                                 | 1724-276-500 | 1 | sztuka |
| 2CKA001754A4440 | Cover frame 4gang white glass - Busch-axcent pur                              | 1724-280     | 1 | sztuka |
| 2CKA001754A4412 | Cover frame 4gang black - Busch-axcent  | 1724-281     | 1 | sztuka |
| 2CKA001754A4346 | Cover frame 4gang studio white - Busch-axcent                                 | 1724-284     | 1 | sztuka |
| 2CKA001754A4348 | Cover frame 4gang yellow - Busch-axcent                                       | 1724-285     | 1 | sztuka |
| 2CKA001754A4350 | Cover frame 4gang green - Busch-axcent  | 1724-286     | 1 | sztuka |
| 2CKA001754A4352 | Cover frame 4gang red - Busch-axcent  | 1724-287     | 1 | sztuka |
| 2CKA001754A4354 | Cover frame 4gang blue - Busch-axcent   | 1724-288     | 1 | sztuka |
| 2CKA001754A4808 | Cover frame 4gang slate grey - Busch-axcent pur                               | 1724-290     | 1 | sztuka |
| 2CKA001754A4474 | Cover frame 4gang entrée grey - Busch-axcent                                  | 1724-291-500 | 1 | sztuka |
| 2CKA001754A4798 | Cover frame 4gang concrete grey - Busch-axcent pur                            | 1724-298     | 1 | sztuka |
| 2CKA001754A4484 | Cover frame 4gang maison-beige - Busch-axcent                                 | 1724-299-500 | 1 | sztuka |
| 2CKA001754A4107 | Cover frame 4gang chrome - solo   | 1724-80      | 1 | sztuka |
| 2CKA001754A4329 | Cover frame 4gang chrome gloss - solo   | 1724-80G     | 1 | sztuka |
| 2CKA001754A4445 | Cover frame 4gang white glass - carat   | 1724-811     | 1 | sztuka |
| 2CKA001754A4261 | Cover frame 4gang bronze - carat  | 1724-821     | 1 | sztuka |
| 2CKA001754A4359 | Cover frame 4gang gold - carat  | 1724-823-101 | 1 | sztuka |
| 2CKA001754A4325 | Cover frame 4gang glass black - carat   | 1724-825     | 1 | sztuka |
| 2CKA001754A4363 | Cover frame 4gang chrome - carat  | 1724-826-101 | 1 | sztuka |
| 2CKA001754A4608 | Cover frame 4gang anthracite - Busch-Dynasty                                  | 1724-831-500 | 1 | sztuka |
| 2CKA001754A4603 | Cover frame 4gang ivory white - Busch-Dynasty                                 | 1724-832-500 | 1 | sztuka |
| 2CKA001754A4578 | Cover frame 4gang polished brass decor anthracite - Busch-Dynasty             | 1724-833-500 | 1 | sztuka |
| 2CKA001754A4568 | Cover frame 4gang polished brass anthracite - Busch-Dynasty                   | 1724-835-500 | 1 | sztuka |
| 2CKA001754A4573 | Cover frame 4gang polished brass decor ivory white - Busch-Dynasty            | 1724-836-500 | 1 | sztuka |
| 2CKA001754A4563 | Cover frame 4gang polished brass ivory white - Busch-Dynasty                  | 1724-838-500 | 1 | sztuka |
| 2CKA001754A4112 | Cover frame 4gang studio white - solo   | 1724-84      | 1 | sztuka |
| 2CKA001754A4598 | Cover frame 4gang antique brass decor anthracite - Busch-Dynasty              | 1724-843-500 | 1 | sztuka |

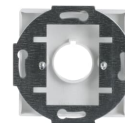
|                 |  |               |   |        |
|-----------------|--|---------------|---|--------|
| 2CKA001754A4588 | Cover frame 4gang antique brass anthracite - Busch-Dynasty         | 1724-845-500  | 1 | sztuka |
| 2CKA001754A4593 | Cover frame 4gang antique brass decor ivory white - Busch-Dynasty  | 1724-846-500  | 1 | sztuka |
| 2CKA001754A4583 | Cover frame 4gang antique brass ivory white - Busch-Dynasty        | 1724-848-500  | 1 | sztuka |
| 2CKA001754A4257 | Cover frame 4gang stainless steel - carat                          | 1724-860      | 1 | sztuka |
| 2CKA001754A4320 | Cover frame 4gang stainless steel - Pure Stainless Steel           | 1724-866K     | 1 | sztuka |
| 2CKA001754A4417 | Cover frame 4gang studio white matt - future linear                | 1724-884K     | 1 | sztuka |
| 2CKA001754A4422 | Cover frame 4gang black matt - future linear                       | 1724-885K     | 1 | sztuka |
| 2CKA001754A4244 | Cover frame 5gang anthracite - future linear                       | 1725-181K     | 1 | sztuka |
| 2CKA001754A4172 | Cover frame 5gang ivory white - future linear                      | 1725-182      | 1 | sztuka |
| 2CKA001754A4234 | Cover frame 5gang ivory white - future linear                      | 1725-182K     | 1 | sztuka |
| 2CKA001754A4310 | Cover frame 5gang aluminium silver - future linear                 | 1725-183K     | 1 | sztuka |
| 2CKA001754A4177 | Cover frame 5gang studio white - future linear                     | 1725-184      | 1 | sztuka |
| 2CKA001754A4517 | Cover frame 5gang studio white - future linear                     | 1725-184K-500 | 1 | sztuka |
| 2CKA001754A4794 | Cover frame 5gang paper brown - Busch-axcent pur                   | 1725-243      | 1 | sztuka |
| 2CKA001754A4804 | Cover frame 5gang glass black - Busch-axcent pur                   | 1725-245      | 1 | sztuka |
| 2CKA001754A4692 | Cover frame 5gang platinum - Busch-axcent pur                      | 1725-270-500  | 1 | sztuka |
| 2CKA001754A4712 | Cover frame 5gang black matt - Busch-axcent pur                    | 1725-275-500  | 1 | sztuka |
| 2CKA001754A4702 | Cover frame 5gang titanium - Busch-axcent pur                      | 1725-276-500  | 1 | sztuka |
| 2CKA001754A4441 | Cover frame 5gang white glass - Busch-axcent pur                   | 1725-280      | 1 | sztuka |
| 2CKA001754A4413 | Cover frame 5gang black - Busch-axcent                             | 1725-281      | 1 | sztuka |
| 2CKA001754A4347 | Cover frame 5gang studio white - Busch-axcent                      | 1725-284      | 1 | sztuka |
| 2CKA001754A4349 | Cover frame 5gang yellow - Busch-axcent                            | 1725-285      | 1 | sztuka |
| 2CKA001754A4351 | Cover frame 5gang green - Busch-axcent                             | 1725-286      | 1 | sztuka |
| 2CKA001754A4353 | Cover frame 5gang red - Busch-axcent                               | 1725-287      | 1 | sztuka |
| 2CKA001754A4355 | Cover frame 5gang blue - Busch-axcent                              | 1725-288      | 1 | sztuka |
| 2CKA001754A4809 | Cover frame 5gang slate grey - Busch-axcent pur                    | 1725-290      | 1 | sztuka |
| 2CKA001754A4475 | Cover frame 5gang entrée grey - Busch-axcent                       | 1725-291-500  | 1 | sztuka |
| 2CKA001754A4799 | Cover frame 5gang concrete grey - Busch-axcent pur                 | 1725-298      | 1 | sztuka |
| 2CKA001754A4485 | Cover frame 5gang maison-beige - Busch-axcent                      | 1725-299-500  | 1 | sztuka |
| 2CKA001754A4108 | Cover frame 5gang chrome - solo                                    | 1725-80       | 1 | sztuka |
| 2CKA001754A4330 | Cover frame 5gang chrome gloss - solo                              | 1725-80G      | 1 | sztuka |
| 2CKA001754A4609 | Cover frame 5gang anthracite - Busch-Dynasty                       | 1725-831-500  | 1 | sztuka |
| 2CKA001754A4604 | Cover frame 5gang ivory white - Busch-Dynasty                      | 1725-832-500  | 1 | sztuka |
| 2CKA001754A4579 | Cover frame 5gang polished brass decor anthracite - Busch-Dynasty  | 1725-833-500  | 1 | sztuka |
| 2CKA001754A4569 | Cover frame 5gang polished brass anthracite - Busch-Dynasty        | 1725-835-500  | 1 | sztuka |
| 2CKA001754A4574 | Cover frame 5gang polished brass decor ivory white - Busch-Dynasty | 1725-836-500  | 1 | sztuka |
| 2CKA001754A4564 | Cover frame 5gang polished brass ivory white - Busch-Dynasty       | 1725-838-500  | 1 | sztuka |
| 2CKA001754A4113 | Cover frame 5gang studio white - solo                              | 1725-84       | 1 | sztuka |
| 2CKA001754A4599 | Cover frame 5gang antique brass decor anthracite - Busch-Dynasty   | 1725-843-500  | 1 | sztuka |
| 2CKA001754A4589 | Cover frame 5gang antique brass anthracite - Busch-Dynasty         | 1725-845-500  | 1 | sztuka |



|                 |   |              |   |        |
|-----------------|---|--------------|---|--------|
| 2CKA001754A4594 | Cover frame 5gang antique brass decor ivory white - Busch-Dynasty               | 1725-846-500 | 1 | sztuka |
| 2CKA001754A4584 | Cover frame 5gang antique brass ivory white - Busch-Dynasty                     | 1725-848-500 | 1 | sztuka |
| 2CKA001754A4321 | Cover frame 5gang stainless steel - Pure Stainless Steel                        | 1725-866K    | 1 | sztuka |
| 2CKA001754A4418 | Cover frame 5gang studio white matt - future linear                             | 1725-884K    | 1 | sztuka |
| 2CKA001754A4423 | Cover frame 5gang black matt - future linear                                    | 1725-885K    | 1 | sztuka |
| 2CKA001754A4368 | Cover frame with labelling field, horizontal 2gang studio white - future linear | 1732-184 NSK | 1 | sztuka |
| 2CKA001754A4369 | Cover frame with labelling field, horizontal 3gang studio white - future linear | 1733-184 NSK | 1 | sztuka |
| 2CKA001754A4370 | Cover frame with labelling field, horizontal 4gang studio white - future linear | 1734-184 NSK | 1 | sztuka |

## Kategorie

Produkty niskiego napięcia i systemy → Wiring Accessories - Light Switch Ranges → Cover Plates and Control Elements → Data / Telecommunication / Antenna



360°