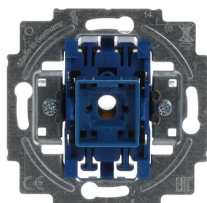


Opis produktu

2000/7 US-500

Flush Mounted Inserts Intermediate switch



Ogólne informacje

Typ produktu	2000/7 US-500
Kod zamówieniowy	2CKA001012A2199
Numer EAN	4011395175644
Opis katalogowy	Flush Mounted Inserts Intermediate switch
Opis	2000/7 US-500 Switch Insert, Intermediate

Installation

Instrukcje i podręczniki	No document needed
Typ montażu	Flush Mounted

Dane techniczne

Arkusze danych, informacja techniczna	No document needed
Liczba przełączników kołkowych	1
Konfiguracja okablowania	Intermediate switch
Typ dźwigni	Rocker/button
Rodzaj podłączenia	Plug Clamp

Podświetlenie	Non-illuminated
---------------	-----------------

Electrical

Napięcie znamionowe (U_r)	250 V
Napięcie pomocnicze AC/DC	250 V AC/DC
Prąd znamionowy (I_n)	10 A
Maksymalny prąd przełączania	Fluorescent Lamps 10 A
Moc	100 W LEDi / CFLi

Design

Design Range	63x63 Allwetter 44 (IP 44) alpha Busch-art linear Busch-axcent Busch-axcent pur Busch-balance SI Busch-Duro 2000 Busch-Duro 2000 SI Linear Busch-Dynasty carat future future linear Pure Stainless Steel Reflex SI Reflex SI Linear Reflex SI/SI Linear solo
Wykończenie pokrywy	Untreated Matt
Material	Thermoplastic
Zapewnione miejsce na etykiety	No
Kolor RAL	RAL 5010 - Gentian Blue

Material Compliance

Dane RoHS	2CKA200000E0190
Status RoHS	Following EU Directive 2011/65/EU and Amendment 2015/863 July 22, 2019
Deklaracja REACH	2CKA309999E9999
REACH Information	False - does not contains substances > 0.1 mass percentage
Szablon raportowania CMRT	9AKK108468A3363

Normy środowiskowe

Stopień ochrony	IP20
-----------------	------

Wymiary

Szerokość netto	71 mm
Wysokość netto	71 mm

Głębokość / długość netto	40 mm
Masa netto	60 g
Głębokość zabudowy (t ₂)	25 mm

Certyfikaty i deklaracje (Numer dokumentu)

Deklaracja zgodności UE	2CKA100000E0099
Deklaracja zgodności - UKCA	2CKA400000E0424

Klasyfikacje

ETIM 9	EC001590 - Installation switch
eClass	V11.0 : 27144053
Kategoria WEEE	5. Small Equipment (No External Dimension More Than 50 cm)
WEEE B2C / B2B	Business To Consumer

Accessories

Identifier	Description	Type	Quantity	Unit Of Measure
2CKA001751A3090	Rocker None for Switch/push button, Single rocker platinum - alpha	1786-20-500	1	sztuka
2CKA001751A3086	Rocker None for Switch/push button, Single rocker bronze - alpha	1786-21-500	1	sztuka
2CKA001751A3081	Rocker None for Switch/push button, Single rocker ivory - alpha	1786-22G-500	1	sztuka
2CKA001751A3078	Rocker None for Switch/push button, Single rocker studio white - alpha	1786-24G-500	1	sztuka
2CKA001751A3080	Rocker None for Switch/push button, Single rocker palladium - alpha	1786-260-500	1	sztuka
2CKA001751A3085	Rocker None for Switch/push button, Single rocker titanium - alpha	1786-266-500	1	sztuka
2CKA001753A9976	Mechanical Controls Without imprint for Switch/push button, Single rocker ivory - impuls	1786-72-500	1	sztuka
2CKA001753A9977	Mechanical Controls Without imprint for Switch/push button, Single rocker alpine white - impuls	1786-74-500	1	sztuka
2CKA001753A0007	Mechanical Controls Without imprint for Switch/push button, Single rocker alpine white - impuls	1786-74-507	1	sztuka
2CKA001753A0182	Cover plate Symbol "light" for Switch/push button, Single rocker studio white matt - impuls	1786-774	1	sztuka
2CKA001753A0183	Mechanical Controls Without imprint for Switch/push button, Single rocker studio white matt - impuls	1786-774-507	1	sztuka
2CKA001753A0153	Cover plate Symbol "light" for Switch/push button, Single rocker black matt - impuls	1786-775	1	sztuka
2CKA001753A0067	Cover plate None for Switch/push button, Single rocker aluminium silver - impuls	1786-783	1	sztuka
2CKA001753A0008	Mechanical Controls Without imprint for Switch/push button, Single rocker champagne metallic - impuls	1786-79-507	1	sztuka
2CKA001751A3093	Mechanical Controls Without imprint for Switch/push button, Single rocker grey metallic - 63x63	1786-803-500	1	sztuka

2CKA001751A3079	Mechanical Controls Without imprint for Switch/push button, Single rocker anthracite - 63x63	1786-81-500	1	sztuka
2CKA001751A3083	Mechanical Controls Without imprint for Switch/push button, Single rocker ivory white - 63x63	1786-82-500	1	sztuka
2CKA001751A3075	Mechanical Controls Without imprint for Switch/push button, Single rocker aluminium silver - 63x63	1786-83-500	1	sztuka
2CKA001751A3074	Mechanical Controls Without imprint for Switch/push button, Single rocker studio white - 63x63	1786-84-500	1	sztuka
2CKA001751A3077	Mechanical Controls Without imprint for Switch/push button, Single rocker stainless steel - Pure Stainless Steel	1786-866-500	1	sztuka
2CKA001751A3089	Mechanical Controls Without imprint for Switch/push button, Single rocker studio white matt - 63x63	1786-884-500	1	sztuka
2CKA001751A3094	Mechanical Controls Without imprint for Switch/push button, Single rocker black matt - 63x63	1786-885-500	1	sztuka
2CKA001434A0448	Rocker with legend for Switch/push button, Single rocker white - Busch-Duro 2000	2546-212	1	sztuka
2CKA001434A0554	Rocker with legend Neutral symbol for Switch/push button, Single rocker alpine white - Reflex SI	2546-214	1	sztuka
2CKA001731A2001	Mechanical Controls Without imprint for Switch/push button, Single rocker white - Busch-Duro 2000	2506-212-500	1	sztuka
2CKA001731A0322	Mechanical Controls Without imprint for Switch/push button, Single rocker white - Busch-Duro 2000	2506-212-506	1	sztuka
2CKA001731A1889	Mechanical Controls Without imprint for Switch/push button, Single rocker white - Busch-Duro 2000	2506-212-507	1	sztuka
2CKA001731A1992	Mechanical Controls Without imprint for Switch/push button, Single rocker alpine white - Reflex SI/SI Linear	2506-214-500	1	sztuka
2CKA001731A1891	Mechanical Controls Without imprint for Switch/push button, Single rocker alpine white - Reflex SI/SI Linear	2506-214-507	1	sztuka
2CKA001731A1007	Mechanical Controls Without imprint for Switch/push button, Single rocker black - Reflex SI	2506-215	1	sztuka
2CKA001731A4012	Rocker None for Switch/push button, Single rocker red - Reflex SI	2506-217-101	1	sztuka
2CKA001731A4007	Rocker with labelling field for Switch/push button, Single push button with Pilot lamp green - 63x63	1764 NLI-13-82	1	sztuka
2CKA001731A1858	Rocker with labelling field for Switch/push button, Single rocker ivory - alpha	1764 NLI-22G	1	sztuka
2CKA001731A1569	Rocker with labelling field for Switch/push button, Single rocker with Pilot lamp studio white - alpha	1764 NLI-24G	1	sztuka
2CKA001731A1975	Rocker with labelling field for Switch/push button, Single rocker grey metallic - 63x63	1764 NLI-803	1	sztuka
2CKA001731A1552	Rocker with labelling field for Switch/push button, Single push button with Pilot lamp anthracite - 63x63	1764 NLI-81	1	sztuka
2CKA001731A1876	Rocker with labelling field for Switch/push button, Single push button with Pilot lamp ivory white - 63x63	1764 NLI-82	1	sztuka
2CKA001731A1948	Rocker with labelling field for Switch/push button, Single push button with Pilot lamp aluminium silver - 63x63	1764 NLI-83	1	sztuka
2CKA001731A1877	Rocker with labelling field for Switch/push button, Single push button with Pilot lamp studio white - 63x63	1764 NLI-84	1	sztuka

2CKA001731A1953	Rocker with labelling field for Switch/push button, Single push button with Pilot lamp stainless steel - Pure Stainless Steel	1764 NLI-866	1	sztuka
2CKA001731A1985	Rocker with labelling field for Switch/push button, Single push button with Pilot lamp studio white matt - 63x63	1764 NLI-884	1	sztuka
2CKA001731A1982	Rocker with labelling field for Switch/push button, Single push button with Pilot lamp black matt - 63x63	1764 NLI-885	1	sztuka
2CKA001731A0355	Mechanical Controls Without imprint for Switch/push button, Single rocker white - Busch-Duro 2000	2509-212-500	1	sztuka
2CKA001731A0900	Rocker None for Switch/push button, Single rocker alpine white - Reflex SI	2509-214	1	sztuka
2CKA001731A1995	Mechanical Controls Without imprint for Switch/push button, Single rocker alpine white - Reflex SI/SI Linear	2509-214-500	1	sztuka
2CKA001751A1625	Rocker for Switch/push button, Single rocker platinum - alpha	1789-20	1	sztuka
2CKA001751A1716	Rocker None for Switch/push button, Single rocker bronze - alpha	1789-21	1	sztuka
2CKA001751A2490	Rocker for Switch/push button, Single rocker ivory - alpha	1789-22G	1	sztuka
2CKA001751A2102	Rocker None for Switch/push button, Single rocker studio white - alpha	1789-24G	1	sztuka
2CKA001751A2825	Rocker for Switch/push button, Single rocker palladium - alpha	1789-260	1	sztuka
2CKA001751A2836	Rocker None for Switch/push button, Single rocker titanium - alpha	1789-266	1	sztuka
2CKA001753A6547	Cover plate Symbol "key/door" for Switch/push button, Single rocker alpine white - impuls	1789-74-101	1	sztuka
2CKA001753A0189	Cover Plate Symbol "key/door" for Switch/push button, Single rocker studio white matt - impuls	1789-774-101	1	sztuka
2CKA001753A0158	Cover plate Symbol "light" for Switch/push button, Single rocker black matt - impuls	1789-775-101	1	sztuka
2CKA001753A0077	Cover plate None for Switch/push button, Single rocker aluminium silver - impuls	1789-783-101	1	sztuka
2CKA001753A6570	Cover plate for Switch/push button, Single rocker champagne metallic - impuls	1789-79-101	1	sztuka
2CKA001751A3013	Rocker for Switch/push button, Single rocker grey metallic - 63x63	1789-803	1	sztuka
2CKA001751A2928	Rocker for Switch/push button, Single rocker anthracite - 63x63	1789-81	1	sztuka
2CKA001751A2813	Rocker for Switch/push button, Single rocker ivory white - 63x63	1789-82	1	sztuka
2CKA001751A2945	Rocker None for Switch/push button, Single rocker aluminium silver - 63x63	1789-83	1	sztuka
2CKA001751A3091	Mechanical Controls Without imprint for Switch/push button, Single rocker studio white - 63x63	1789-84-500	1	sztuka
2CKA001751A2957	Rocker for Switch/push button, Single rocker stainless steel - Pure Stainless Steel	1789-866	1	sztuka
2CKA001751A3033	Rocker for Switch/push button, Single rocker studio white matt - 63x63	1789-884	1	sztuka
2CKA001751A3047	Rocker for Switch/push button, Single rocker black matt - 63x63	1789-885	1	sztuka
2CKA001731A0272	Rocker with legend Symbol "light" for Switch/push button, Single rocker white - Busch-Duro 2000	2520 LI-212	1	sztuka
2CKA001731A1996	Mechanical Controls Symbol "light" for Switch/push button, Single rocker alpine white - Reflex SI/SI Linear	2520 LI-214-500	1	sztuka
2CKA001751A3185	Rocker for Switch/push button, Single rocker grey metallic - 63x63	2520 LI-803	1	sztuka

2CKA001751A3186	Rocker with legend Symbol "light" for Switch/push button, Single rocker anthracite - 63x63	2520 LI-81	1	sztuka
2CKA001751A3187	Rocker with legend Symbol "light" for Switch/push button, Single rocker ivory white - 63x63	2520 LI-82	1	sztuka
2CKA001751A3188	Rocker with legend Symbol "light" for Switch/push button, Single rocker aluminium silver - 63x63	2520 LI-83	1	sztuka
2CKA001751A3191	Rocker with legend Symbol "light" for Switch/push button, Single rocker stainless steel - Pure Stainless Steel	2520 LI-866	1	sztuka
2CKA001751A3192	Rocker with legend Symbol "light" for Switch/push button, Single rocker studio white matt - 63x63	2520 LI-884	1	sztuka
2CKA001751A3193	Rocker with legend Symbol "light" for Switch/push button, Single rocker black matt - 63x63	2520 LI-885	1	sztuka
2CKA001731A2000	Mechanical Controls Without imprint for Switch/push button, Single rocker white - Busch-Duro 2000	2520-212-500	1	sztuka
2CKA001731A1994	Mechanical Controls Without imprint for Switch/push button, Single rocker alpine white - Reflex SI/SI Linear	2520-214-500	1	sztuka
2CKA001731A0561	Rocker with labelling field for Switch/push button, Single rocker white - Busch-Duro 2000	2506 N-212	1	sztuka
2CKA001731A0520	Rocker with labelling field for Switch/push button, Single rocker alpine white - Reflex SI	2506 N-214	1	sztuka
2CKA001731A1445	Rocker with labelling field for Switch/push button, Single rocker with Pilot lamp white - Busch-Duro 2000	2510 NLI-212	1	sztuka
2CKA001731A1452	Rocker with labelling field for Switch/push button, Single rocker with Pilot lamp alpine white - Reflex SI	2510 NLI-214	1	sztuka
2CKA001731A0330	Mechanical Controls Characters 0 and 1 for Switch/push button, Single rocker white - Busch-Duro 2000	2502-212-500	1	sztuka
2CKA001731A0884	Rocker with legend Characters 0 and 1 for Switch/push button, Single rocker alpine white - Reflex SI	2502-214	1	sztuka
2CKA001434A0455	Rocker with legend Characters 0 and 1 for Switch/push button, Single rocker white - Busch-Duro 2000	2544-212	1	sztuka
2CKA001434A0570	Rocker with legend Characters 0 and 1; neutral symbol for Switch/push button, Single rocker alpine white - Reflex SI	2544-214	1	sztuka
2CKA001751A3146	Rocker for Switch/push button, Single rocker grey metallic - 63x63	1789 N-803	1	sztuka
2CKA001751A3147	Rocker None for Switch/push button, Single rocker anthracite - 63x63	1789 N-81	1	sztuka
2CKA001751A3148	Rocker None for Switch/push button, Single rocker ivory white - 63x63	1789 N-82	1	sztuka
2CKA001751A3149	Rocker for Switch/push button, Single rocker aluminium silver - 63x63	1789 N-83	1	sztuka
2CKA001751A3151	Mechanical Controls for Switch/push button, Single rocker studio white - 63x63	1789 N-84-500	1	sztuka
2CKA001751A3152	Rocker None for Switch/push button, Single rocker stainless steel - Pure Stainless Steel	1789 N-866	1	sztuka
2CKA001751A3153	Rocker None for Switch/push button, Single rocker studio white matt - 63x63	1789 N-884	1	sztuka
2CKA001751A3154	Rocker None for Switch/push button, Single rocker black matt - 63x63	1789 N-885	1	sztuka
2CKA001751A1633	Rocker with legend Symbol "light" for Switch/push button, Single rocker platinum - alpha	1789 LI-20	1	sztuka
2CKA001751A1724	Rocker with legend Symbol "light" for Switch/push button, Single rocker bronze - alpha	1789 LI-21	1	sztuka
2CKA001751A2516	Rocker with legend Symbol "light" for Switch/push button, Single rocker ivory - alpha	1789 LI-22G	1	sztuka

2CKA001751A2201	Rocker with legend Symbol "light" for Switch/push button, Single rocker studio white - alpha	1789 LI-24G	1	sztuka
2CKA001751A2828	Rocker with legend Symbol "light" for Switch/push button, Single rocker palladium - alpha	1789 LI-260	1	sztuka
2CKA001751A2839	Rocker with legend Symbol "light" for Switch/push button, Single rocker titanium - alpha	1789 LI-266	1	sztuka
2CKA001753A4815	Cover plate with legend Symbol "light" for Switch/push button, Single rocker alpine white - impuls	1789 LI-74	1	sztuka
2CKA001753A0187	Cover plate with legend Symbol "light" for Switch/push button, Single rocker studio white matt - impuls	1789 LI-774	1	sztuka
2CKA001753A0156	Cover plate with legend Symbol "light" for Switch/push button, Single rocker black matt - impuls	1789 LI-775	1	sztuka
2CKA001753A0073	Cover plate with legend Symbol "light" for Switch/push button, Single rocker aluminium silver - impuls	1789 LI-783	1	sztuka
2CKA001753A5291	Cover plate with legend Symbol "light" for Switch/push button, Single rocker champagne metallic - impuls	1789 LI-79	1	sztuka
2CKA001751A3014	Rocker with legend Symbol "light" for Switch/push button, Single rocker grey metallic - 63x63	1789 LI-803	1	sztuka
2CKA001751A2931	Rocker with legend Symbol "light" for Switch/push button, Single rocker anthracite - 63x63	1789 LI-81	1	sztuka
2CKA001751A2745	Rocker with legend Symbol "light" for Switch/push button, Single rocker ivory white - 63x63	1789 LI-82	1	sztuka
2CKA001751A2951	Rocker with legend Symbol "light" for Switch/push button, Single rocker aluminium silver - 63x63	1789 LI-83	1	sztuka
2CKA001751A3084	Mechanical Controls Symbol "light" for Switch/push button, Single rocker studio white - 63x63	1789 LI-84-500	1	sztuka
2CKA001751A2958	Rocker with legend Symbol "light" for Switch/push button, Single rocker stainless steel - Pure Stainless Steel	1789 LI-866	1	sztuka
2CKA001751A3031	Rocker with legend Symbol "light" for Switch/push button, Single rocker studio white matt - 63x63	1789 LI-884	1	sztuka
2CKA001751A3045	Rocker with legend Symbol "light" for Switch/push button, Single rocker black matt - 63x63	1789 LI-885	1	sztuka
2CKA001731A4011	Rocker with labelling field for Switch/push button, Single push button with Pilot lamp red - 63x63	1764 NLI-12-82-101	1	sztuka
2CKA001751A1674	Rocker None for Switch/push button, Single rocker platinum - alpha	1788-20	1	sztuka
2CKA001751A1765	Rocker with legend Symbol "light" for Switch/push button, Single rocker bronze - alpha	1788-21	1	sztuka
2CKA001751A2557	Rocker for Switch/push button, Single rocker ivory - alpha	1788-22G	1	sztuka
2CKA001751A2326	Rocker None for Switch/push button, Single rocker studio white - alpha	1788-24G	1	sztuka
2CKA001751A2823	Rocker for Switch/push button, Single rocker palladium - alpha	1788-260	1	sztuka
2CKA001751A2834	Rocker None for Switch/push button, Single rocker titanium - alpha	1788-266	1	sztuka
2CKA001751A3017	Rocker for Switch/push button, Single rocker grey metallic - 63x63	1788-803	1	sztuka
2CKA001751A2927	Rocker None for Switch/push button, Single rocker anthracite - 63x63	1788-81	1	sztuka
2CKA001751A2742	Rocker None for Switch/push button, Single rocker ivory white - 63x63	1788-82	1	sztuka
2CKA001751A2954	Rocker with legend Characters 0 and 1 for Switch/push button, Single rocker aluminium silver - 63x63	1788-83	1	sztuka

2CKA001751A2750	Rocker None for Switch/push button, Single rocker studio white - 63x63	1788-84	1	sztuka
2CKA001751A2961	Rocker None for Switch/push button, Single rocker stainless steel - Pure Stainless Steel	1788-866	1	sztuka
2CKA001751A3028	Rocker None for Switch/push button, Single rocker studio white matt - 63x63	1788-884	1	sztuka
2CKA001751A3042	Rocker None for Switch/push button, Single rocker black matt - 63x63	1788-885	1	sztuka
2CKA001751A1690	Rocker with legend Heizung for Switch/push button, Single rocker platinum - alpha	1789 H-20	1	sztuka
2CKA001751A1781	Rocker with legend Heizung for Switch/push button, Single rocker bronze - alpha	1789 H-21	1	sztuka
2CKA001751A2573	Rocker with legend Heizung for Switch/push button, Single rocker ivory - alpha	1789 H-22G	1	sztuka
2CKA001751A2375	Rocker with legend Heizung for Switch/push button, Single rocker studio white - alpha	1789 H-24G	1	sztuka
2CKA001751A2826	Rocker with legend Heizung for Switch/push button, Single rocker palladium - alpha	1789 H-260	1	sztuka
2CKA001751A2837	Rocker with legend Heizung for Switch/push button, Single rocker titanium - alpha	1789 H-266	1	sztuka
2CKA001753A0068	Cover plate with labelling field for Switch/push button, Single rocker ivory - impuls	1789 H-72-101	1	sztuka
2CKA001753A6588	Cover plate with labelling field for Switch/push button, Single rocker alpine white - impuls	1789 H-74-101	1	sztuka
2CKA001753A0184	Cover plate with labelling field for Switch/push button, Single rocker studio white matt - impuls	1789 H-774-101	1	sztuka
2CKA001753A0154	Cover plate with labelling field for Switch/push button, Single rocker black matt - impuls	1789 H-775-101	1	sztuka
2CKA001753A0069	Cover plate with labelling field for Switch/push button, Single rocker aluminium silver - impuls	1789 H-783-101	1	sztuka
2CKA001753A6612	Cover plate with labelling field for Switch/push button, Single rocker champagne metallic - impuls	1789 H-79-101	1	sztuka
2CKA001751A3019	Rocker with legend Heizung for Switch/push button, Single rocker grey metallic - 63x63	1789 H-803	1	sztuka
2CKA001751A2929	Rocker with legend Heizung for Switch/push button, Single rocker anthracite - 63x63	1789 H-81	1	sztuka
2CKA001751A2743	Rocker with legend Heizung for Switch/push button, Single rocker ivory white - 63x63	1789 H-82	1	sztuka
2CKA001751A2955	Rocker with legend Heizung for Switch/push button, Single rocker aluminium silver - 63x63	1789 H-83	1	sztuka
2CKA001751A2751	Rocker with legend Heizung for Switch/push button, Single rocker studio white - 63x63	1789 H-84	1	sztuka
2CKA001751A2963	Rocker with legend Heizung for Switch/push button, Single rocker stainless steel - Pure Stainless Steel	1789 H-866	1	sztuka
2CKA001751A3029	Rocker with legend Heizung for Switch/push button, Single rocker studio white matt - 63x63	1789 H-884	1	sztuka
2CKA001751A3043	Rocker with legend Heizung for Switch/push button, Single rocker black matt - 63x63	1789 H-885	1	sztuka
2CKA001784A0545	Illumination set Switch/push button Orange Neon lamp 230 V	8350	1	sztuka
2CKA001784A0560	Illumination set Switch/push button Orange Neon lamp 230 V	8352	1	sztuka
2CKA001784A0578	Illumination set Switch/push button Orange Neon lamp 230 V	8353	1	sztuka
2CKA001784A0552	Illumination set Switch/push button Orange Neon lamp 230 V red	8360	1	sztuka
2CKA001784A0586	Illumination set Switch/push button Orange Neon lamp 230 V yellow	8362	1	sztuka
2CKA001784A0594	Illumination set Switch/push button Orange Neon lamp 230 V white	8363	1	sztuka

2CKA001784A0024	Illumination set Switch/push button White Incandescent lamp 3 ... 8 V - ocean	8333-1	1	sztuka
2CKA001784A0032	Illumination set Switch/push button White Incandescent lamp 24 V	8337-1	1	sztuka
2CKA001784A0164	Illumination set Switch/push button White Incandescent lamp 8 V	8344-1	1	sztuka
2CKA001784A0289	Illumination set Switch/push button White Incandescent lamp 12 V	8345-1	1	sztuka
2CKA001754A4373	Cover frame 1gang platinum - alpha	1721 KA-20	1	sztuka
2CKA001754A4382	Cover frame 1gang bronze - alpha	1721 KA-21	1	sztuka
2CKA001754A2965	Cover frame 1gang studio white - alpha	1721 KA-24G	1	sztuka
2CKA001754A4509	Cover frame 1gang titanium - alpha	1721 KA-266- 500	1	sztuka
2CKA001754A4516	Cover frame 1gang white - Busch-Duro 2000	1721 NS-212- 500	1	sztuka
2CKA001754A4496	Cover frame 1gang alpine white - Reflex SI	1721 NS-214- 500	1	sztuka
2CKA001754A4093	Cover frame with labelling field, horizontal 1gang white - Busch-Duro 2000	1721 NSKA- 212	1	sztuka
2CKA001754A4497	Cover frame 1gang alpine white - Reflex SI Linear	1721 NSKA- 214-500	1	sztuka
2CKA001754A4065	Cover frame with labelling field, horizontal 1gang studio white - alpha	1721 NSKA- 24G	1	sztuka
2CKA001754A4713	Cover frame 1gang red - future linear	1721-12-182K- 101	1	sztuka
2CKA001754A4240	Cover frame 1gang anthracite - future linear	1721-181K	1	sztuka
2CKA001754A4168	Cover frame 1gang ivory white - future linear	1721-182	1	sztuka
2CKA001754A4506	Cover frame 1gang ivory white - future linear	1721-182K-500	1	sztuka
2CKA001754A4529	Cover frame 1gang aluminium silver - future linear	1721-183K-500	1	sztuka
2CKA001754A4173	Cover frame 1gang studio white - future linear	1721-184	1	sztuka
2CKA001754A4527	Cover frame 1gang studio white - future linear	1721-184 NSK- 500	1	sztuka
2CKA001754A4504	Cover frame 1gang studio white - future linear	1721-184-500	1	sztuka
2CKA001754A4498	Cover frame 1gang studio white - future linear	1721-184K-500	1	sztuka
2CKA001754A4521	Cover frame 1gang platinum - alpha	1721-20-500	1	sztuka
2CKA001754A4522	Cover frame 1gang bronze - alpha	1721-21-500	1	sztuka
2CKA001754A4775	Cover frame 1gang glass purple - Busch-axcent pur	1721-223	1	sztuka
2CKA001754A4760	Cover frame 1gang glass sun - Busch-axcent pur	1721-225	1	sztuka
2CKA001754A4770	Cover frame 1gang glass avocado - Busch-axcent pur	1721-226	1	sztuka
2CKA001754A4765	Cover frame 1gang glass coral - Busch-axcent pur	1721-227	1	sztuka
2CKA001754A4755	Cover frame 1gang glass ocean - Busch-axcent pur	1721-228	1	sztuka
2CKA001754A4780	Cover frame 1gang glass oyster - Busch-axcent pur	1721-229	1	sztuka
2CKA001754A4512	Cover frame 1gang ivory - alpha	1721-22G-500	1	sztuka
2CKA001754A4790	Cover frame 1gang paper brown - Busch-axcent pur	1721-243	1	sztuka
2CKA001754A4800	Cover frame 1gang glass black - Busch-axcent pur	1721-245	1	sztuka
2CKA001754A4785	Cover frame 1gang paper blue - Busch-axcent pur	1721-248	1	sztuka
2CKA001754A4503	Cover frame 1gang studio white - alpha	1721-24G-500	1	sztuka
2CKA001754A4391	Cover frame 1gang titanium - alpha	1721-266	1	sztuka
2CKA001754A4688	Cover frame 1gang platinum - Busch-axcent pur	1721-270-500	1	sztuka
2CKA001754A4708	Cover frame 1gang black matt - Busch-axcent pur	1721-275-500	1	sztuka

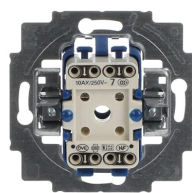
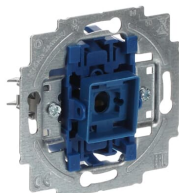
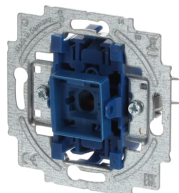
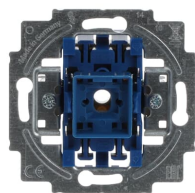
2CKA001754A4698	Cover frame 1gang titanium - Busch-axcent pur	1721-276-500	1	sztuka
2CKA001754A4437	Cover frame 1gang white glass - Busch-axcent pur	1721-280	1	sztuka
2CKA001754A4409	Cover frame 1gang black - Busch-axcent	1721-281	1	sztuka
2CKA001754A4331	Cover frame 1gang studio white - Busch-axcent	1721-284	1	sztuka
2CKA001754A4334	Cover frame 1gang yellow - Busch-axcent	1721-285	1	sztuka
2CKA001754A4337	Cover frame 1gang green - Busch-axcent	1721-286	1	sztuka
2CKA001754A4340	Cover frame 1gang red - Busch-axcent	1721-287	1	sztuka
2CKA001754A4343	Cover frame 1gang blue - Busch-axcent	1721-288	1	sztuka
2CKA001754A4805	Cover frame 1gang slate grey - Busch-axcent pur	1721-290	1	sztuka
2CKA001754A4471	Cover frame 1gang entrée grey - Busch-axcent	1721-291-500	1	sztuka
2CKA001754A4795	Cover frame 1gang concrete grey - Busch-axcent pur	1721-298	1	sztuka
2CKA001754A4535	Cover frame 1gang chrome - solo	1721-80-500	1	sztuka
2CKA001754A4538	Cover frame 1gang chrome gloss - solo	1721-80G-500	1	sztuka
2CKA001754A4442	Cover frame 1gang white glass - carat	1721-811	1	sztuka
2CKA001754A4820	Cover frame 1gang porcelain anthracite - carat	1721-815	1	sztuka
2CKA001754A4258	Cover frame 1gang bronze - carat	1721-821	1	sztuka
2CKA001754A4356	Cover frame 1gang gold - carat	1721-823-101	1	sztuka
2CKA001754A4322	Cover frame 1gang glass black - carat	1721-825	1	sztuka
2CKA001754A4360	Cover frame 1gang chrome - carat	1721-826-101	1	sztuka
2CKA001754A4605	Cover frame 1gang anthracite - Busch-Dynasty	1721-831-500	1	sztuka
2CKA001754A4600	Cover frame 1gang ivory white - Busch-Dynasty	1721-832-500	1	sztuka
2CKA001754A4575	Cover frame 1gang polished brass decor anthracite - Busch-Dynasty	1721-833-500	1	sztuka
2CKA001754A4565	Cover frame 1gang polished brass anthracite - Busch-Dynasty	1721-835-500	1	sztuka
2CKA001754A4570	Cover frame 1gang polished brass decor ivory white - Busch-Dynasty	1721-836-500	1	sztuka
2CKA001754A4560	Cover frame 1gang polished brass ivory white - Busch-Dynasty	1721-838-500	1	sztuka
2CKA001754A4595	Cover frame 1gang antique brass decor anthracite - Busch-Dynasty	1721-843-500	1	sztuka
2CKA001754A4536	Cover frame 1gang studio white - solo	1721-84-500	1	sztuka
2CKA001754A4585	Cover frame 1gang antique brass anthracite - Busch-Dynasty	1721-845-500	1	sztuka
2CKA001754A4590	Cover frame 1gang antique brass decor ivory white - Busch-Dynasty	1721-846-500	1	sztuka
2CKA001754A4580	Cover frame 1gang antique brass ivory white - Busch-Dynasty	1721-848-500	1	sztuka
2CKA001754A4254	Cover frame 1gang stainless steel - carat	1721-860	1	sztuka
2CKA001754A4500	Cover frame 1gang stainless steel - Pure Stainless Steel	1721-866K-500	1	sztuka
2CKA001754A4531	Cover frame 1gang studio white matt - future linear	1721-884K-500	1	sztuka
2CKA001754A4532	Cover frame 1gang black matt - future linear	1721-885K-500	1	sztuka
2CKA001754A4374	Cover frame 2gang platinum - alpha	1722 KA-20	1	sztuka
2CKA001754A4383	Cover frame 2gang bronze - alpha	1722 KA-21	1	sztuka
2CKA001754A3849	Cover frame 2gang ivory - alpha	1722 KA-22G	1	sztuka
2CKA001754A2999	Cover frame 2gang studio white - alpha	1722 KA-24G	1	sztuka
2CKA001754A4523	Cover frame 2gang titanium - alpha	1722 KA-266-500	1	sztuka
2CKA001754A2239	Cover frame with labelling field, vertical 2gang white - Busch-Duro 2000	1722 NS-212	1	sztuka

2CKA001754A2163	Cover frame with labelling field, vertical 2gang alpine white - Reflex SI	1722 NS-214	1	sztuka
2CKA001754A4094	Cover frame with labelling field, vertical 2gang white - Busch-Duro 2000	1722 NSKA-212	1	sztuka
2CKA001754A4059	Cover frame with labelling field, vertical 2gang alpine white - Reflex SI Linear	1722 NSKA-214	1	sztuka
2CKA001754A4066	Cover frame with labelling field, horizontal 2gang studio white - alpha	1722 NSKA-24G	1	sztuka
2CKA001754A4714	Cover frame 2gang red - future linear	1722-12-182K-101	1	sztuka
2CKA001754A4241	Cover frame 2gang anthracite - future linear	1722-181K	1	sztuka
2CKA001754A4169	Cover frame 2gang ivory white - future linear	1722-182	1	sztuka
2CKA001754A4231	Cover frame 2gang ivory white - future linear	1722-182K	1	sztuka
2CKA001754A4530	Cover frame 2gang aluminium silver - future linear	1722-183K-500	1	sztuka
2CKA001754A4174	Cover frame 2gang studio white - future linear	1722-184	1	sztuka
2CKA001754A4508	Cover frame 2gang studio white - future linear	1722-184-500	1	sztuka
2CKA001754A4499	Cover frame 2gang studio white - future linear	1722-184K-500	1	sztuka
2CKA001754A4524	Cover frame 2gang platinum - alpha	1722-20-500	1	sztuka
2CKA001754A1710	Cover frame 2gang bronze - alpha	1722-21	1	sztuka
2CKA001754A4776	Cover frame 2gang glass purple - Busch-axcent pur	1722-223	1	sztuka
2CKA001754A4761	Cover frame 2gang glass sun - Busch-axcent pur	1722-225	1	sztuka
2CKA001754A4771	Cover frame 2gang glass avocado - Busch-axcent pur	1722-226	1	sztuka
2CKA001754A4766	Cover frame 2gang glass coral - Busch-axcent pur	1722-227	1	sztuka
2CKA001754A4756	Cover frame 2gang glass ocean - Busch-axcent pur	1722-228	1	sztuka
2CKA001754A4781	Cover frame 2gang glass oyster - Busch-axcent pur	1722-229	1	sztuka
2CKA001754A3799	Cover frame 2gang ivory - alpha	1722-22G	1	sztuka
2CKA001754A4791	Cover frame 2gang paper brown - Busch-axcent pur	1722-243	1	sztuka
2CKA001754A4801	Cover frame 2gang glass black - Busch-axcent pur	1722-245	1	sztuka
2CKA001754A4786	Cover frame 2gang paper blue - Busch-axcent pur	1722-248	1	sztuka
2CKA001754A4511	Cover frame 2gang studio white - alpha	1722-24G-500	1	sztuka
2CKA001754A4392	Cover frame 2gang titanium - alpha	1722-266	1	sztuka
2CKA001754A4689	Cover frame 2gang platinum - Busch-axcent pur	1722-270-500	1	sztuka
2CKA001754A4709	Cover frame 2gang black matt - Busch-axcent pur	1722-275-500	1	sztuka
2CKA001754A4699	Cover frame 2gang titanium - Busch-axcent pur	1722-276-500	1	sztuka
2CKA001754A4438	Cover frame 2gang white glass - Busch-axcent pur	1722-280	1	sztuka
2CKA001754A4410	Cover frame 2gang black - Busch-axcent	1722-281	1	sztuka
2CKA001754A4332	Cover frame 2gang studio white - Busch-axcent	1722-284	1	sztuka
2CKA001754A4335	Cover frame 2gang yellow - Busch-axcent	1722-285	1	sztuka
2CKA001754A4338	Cover frame 2gang green - Busch-axcent	1722-286	1	sztuka
2CKA001754A4341	Cover frame 2gang red - Busch-axcent	1722-287	1	sztuka
2CKA001754A4344	Cover frame 2gang blue - Busch-axcent	1722-288	1	sztuka
2CKA001754A4806	Cover frame 2gang slate grey - Busch-axcent pur	1722-290	1	sztuka
2CKA001754A4472	Cover frame 2gang entrée grey - Busch-axcent	1722-291-500	1	sztuka
2CKA001754A4796	Cover frame 2gang concrete grey - Busch-axcent pur	1722-298	1	sztuka
2CKA001754A4482	Cover frame 2gang maison-beige - Busch-axcent	1722-299-500	1	sztuka
2CKA001754A4537	Cover frame 2gang chrome - solo	1722-80-500	1	sztuka

2CKA001754A4327	Cover frame 2gang chrome gloss - solo	1722-80G	1	sztuka
2CKA001754A4443	Cover frame 2gang white glass - carat	1722-811	1	sztuka
2CKA001754A4821	Cover frame 2gang porcelain anthracite - carat	1722-815	1	sztuka
2CKA001754A4259	Cover frame 2gang bronze - carat	1722-821	1	sztuka
2CKA001754A4357	Cover frame 2gang gold - carat	1722-823-101	1	sztuka
2CKA001754A4323	Cover frame 2gang glass black - carat	1722-825	1	sztuka
2CKA001754A4361	Cover frame 2gang chrome - carat	1722-826-101	1	sztuka
2CKA001754A4606	Cover frame 2gang anthracite - Busch-Dynasty	1722-831-500	1	sztuka
2CKA001754A4601	Cover frame 2gang ivory white - Busch-Dynasty	1722-832-500	1	sztuka
2CKA001754A4576	Cover frame 2gang polished brass decor anthracite - Busch-Dynasty	1722-833-500	1	sztuka
2CKA001754A4566	Cover frame 2gang polished brass anthracite - Busch-Dynasty	1722-835-500	1	sztuka
2CKA001754A4571	Cover frame 2gang polished brass decor ivory white - Busch-Dynasty	1722-836-500	1	sztuka
2CKA001754A4561	Cover frame 2gang polished brass ivory white - Busch-Dynasty	1722-838-500	1	sztuka
2CKA001754A4596	Cover frame 2gang antique brass decor anthracite - Busch-Dynasty	1722-843-500	1	sztuka
2CKA001754A4539	Cover frame 2gang studio white - solo	1722-84-500	1	sztuka
2CKA001754A4586	Cover frame 2gang antique brass anthracite - Busch-Dynasty	1722-845-500	1	sztuka
2CKA001754A4591	Cover frame 2gang antique brass decor ivory white - Busch-Dynasty	1722-846-500	1	sztuka
2CKA001754A4581	Cover frame 2gang antique brass ivory white - Busch-Dynasty	1722-848-500	1	sztuka
2CKA001754A4255	Cover frame 2gang stainless steel - carat	1722-860	1	sztuka
2CKA001754A4501	Cover frame 2gang stainless steel - Pure Stainless Steel	1722-866K-500	1	sztuka
2CKA001754A4415	Cover frame 2gang studio white matt - future linear	1722-884K	1	sztuka
2CKA001754A4534	Cover frame 2gang black matt - future linear	1722-885K-500	1	sztuka
2CKA001754A4376	Cover frame 3gang platinum - alpha	1723 KA-20	1	sztuka
2CKA001754A4385	Cover frame 3gang bronze - alpha	1723 KA-21	1	sztuka
2CKA001754A3856	Cover frame 3gang ivory - alpha	1723 KA-22G	1	sztuka
2CKA001754A3021	Cover frame 3gang studio white - alpha	1723 KA-24G	1	sztuka
2CKA001754A4118	Cover frame 3gang palladium - alpha	1723 KA-260	1	sztuka
2CKA001754A4127	Cover frame 3gang titanium - alpha	1723 KA-266	1	sztuka
2CKA001754A3708	Cover frame with labelling field, vertical 3gang white - Busch-Duro 2000	1723 NS-212	1	sztuka
2CKA001754A3724	Cover frame with labelling field, vertical 3gang alpine white - Reflex SI	1723 NS-214	1	sztuka
2CKA001754A4096	Cover frame with labelling field, vertical 3gang white - Busch-Duro 2000	1723 NSKA-212	1	sztuka
2CKA001754A4061	Cover frame with labelling field, vertical 3gang alpine white - Reflex SI Linear	1723 NSKA-214	1	sztuka
2CKA001754A4068	Cover frame with labelling field, horizontal 3gang studio white - alpha	1723 NSKA-24G	1	sztuka
2CKA001754A4242	Cover frame 3gang anthracite - future linear	1723-181K	1	sztuka

Kategorie

Produkty niskiego napięcia i systemy → Wiring Accessories - Light Switch Ranges → Flush Mounted Inserts → Mechanical Inserts



360