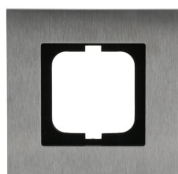

Opis produktu

1721-860

Cover frame 1gang stainless steel - carat



Ogólne informacje

Typ produktu	1721-860
Kod zamówieniowy	2CKA001754A4254
Oznaczenie typu ABB	Cover Frame 1gang xxx - carat
Numer EAN	4011395056790
Opis katalogowy	Cover frame 1gang stainless steel - carat
Opis	1721-860 Cover Frame 1-gang

Installation

Instrukcje i podręczniki	No document needed
Typ montażu	Flush Mounted
Rodzaj mocowania	Clamp
Orientacja montażu	Horizontal Vertical

Dane techniczne

Arkuszy danych, informacja techniczna	No document needed
Liczba	1

Design

Design Range	carat 63x63
Wykończenie pokrywy	Brushed Matt
Materiał	Stainless steel
Zapewnione miejsce na etykiety	No
Kolor	stainless steel

Material Compliance

Dane RoHS	2CKA200000E2648
Status RoHS	Following EU Directive 2011/65/EU and Amendment 2015/863 July 22, 2019
Deklaracja REACH	2CKA309999E9999
REACH Information	True - contains substances > 0.1 mass percentage
Szablon raportowania CMRT	9AKK108468A3363
SCIP	17bc733b-22c9-4036-b1e8-97794d9fecdd Niemcy (DE)

Normy środowiskowe

Stopień ochrony	IP20
-----------------	------

Wymiary

Szerokość netto	107 mm
Wysokość netto	107 mm
Głębokość / długość netto	11 mm
Masa netto	239 g

Certyfikaty i deklaracje (Numer dokumentu)

Deklaracja zgodności UE	No Declaration needed
-------------------------	-----------------------

Klasyfikacje

ETIM 9	EC000007 - Cover frame for domestic switching devices
eClass	V11.0 : 27144001
Kategoria WEEE	Product Not in WEEE Scope

Accessories

Identifier	Description	Type	Quantity	Unit Of Measure
2CKA001731A1914	Rocker None for Pull-cord switch, Pull cord anthracite - 63x63	1720-81	1	sztuka
2CKA001754A4822	Cover frame 3gang porcelain anthracite - carat	1723-815	1	sztuka
2CKA001710A4120	Cover plate with legend Level switch Turn button anthracite - 63x63	1740 DR/03-81	1	sztuka
2CKA001710A4122	Mechanical Controls Symbol "2-1-3" for Level switch, Turn button anthracite - 63x63	1740 DRL-81-503	1	sztuka
2CKA001710A3623	Cover plate with legend Symbol "arrows" for Venetian blind, Turn button anthracite - 63x63	1740-81	1	sztuka
2CKA001710A3612	Cover plate Blind cap 1 gang with Mounting plate anthracite - 63x63	1742-81	1	sztuka
2CKA001724A4365	Cover plate SAT 4 gang anthracite - 63x63	1743/10-04-81	1	sztuka
2CKA001724A4374	Cover plate SAT 4 gang anthracite - 63x63	1743-04-81	1	sztuka
2CKA001724A4252	Cover plate SAT 3 gang anthracite - 63x63	1743-81	1	sztuka
2CKA001710A3624	Cover plate telephone connector boxes (VDo) anthracite - 63x63	1745-81	1	sztuka
2CKA001710A3628	Cover plate Telecommunication inserts 50 x 50 mm anthracite - 63x63	1746/10-81	1	sztuka
2CKA001710A3618	Cover plate with Hinged Lid Telecommunication inserts 50 x 50 mm 1 gang anthracite - 63x63	1746-81	1	sztuka
2CKA001710A4093	Intermediate Ring for cover plates Busch-Balance® SI anthracite - 63x63	1747 BSI-81	1	sztuka
2CKA001710A3614	Cover plate Cable outlet with Mounting plate anthracite - 63x63	1749-81	1	sztuka
2CKA001723A0253	Cover plate Loudspeaker 2 gang anthracite - 63x63	1751-81	1	sztuka
2CKA001710A3626	Cover plate with legend Symbol "arrows" or "0 - 1" for Venetian blind, Key anthracite - 63x63	1755 SL/PZ-81-101	1	sztuka
2CKA001724A4253	Cover plate with labelling field For data connection housing 2 gang anthracite - 63x63	1758-81	1	sztuka
2CKA001731A3998	Rocker with labelling field and legend Symbol "bell" for Switch/push button, Single push button with Pilot lamp anthracite - 63x63	1764 NLI/KI-81	1	sztuka
2CKA001731A1552	Rocker with labelling field for Switch/push button, Single push button with Pilot lamp anthracite - 63x63	1764 NLI-81	1	sztuka
2CKA001710A3613	Cover plate TAE 1 gang anthracite - 63x63	1766-81	1	sztuka
2CKA001753A0255	Cover plate with legend 1 ... 15 Min for Time switch, Toggle anthracite - 63x63	1770-81-103	1	sztuka
2CKA001753A0265	Cover plate with legend 10 ... 120 Min for Time switch, Toggle anthracite - 63x63	1771-81-103	1	sztuka
2CKA001751A2977	Multimedia Devices anthracite	1785 ENO-81	1	sztuka
2CKA001751A2934	Rocker with legend Symbol "arrows" for Venetian blind, Two-part rocker anthracite - 63x63	1785 JA-81	1	sztuka
2CKA001751A3205	Rocker with legend DND, MUR for Switch/push button, Two-part rocker anthracite - 63x63	1785/11-81	1	sztuka
2CKA001751A2930	Rocker None for Switch/push button, Two-part rocker anthracite - 63x63	1785-81	1	sztuka

2CKA001751A2965	Multimedia Devices anthracite	1786 ENO-81	1	sztuka
2CKA001751A3207	Rocker with legend DND for Switch/push button, Single rocker anthracite - 63x63	1786/11-81	1	sztuka
2CKA001751A3079	Mechanical Controls Without imprint for Switch/push button, Single rocker anthracite - 63x63	1786-81-500	1	sztuka
2CKA001751A2927	Rocker None for Switch/push button, Single rocker anthracite - 63x63	1788-81	1	sztuka
2CKA001751A2929	Rocker with legend Heizung for Switch/push button, Single rocker anthracite - 63x63	1789 H-81	1	sztuka
2CKA001751A2932	Rocker with legend Symbol "bell" for Switch/push button, Single rocker anthracite - 63x63	1789 KI-81	1	sztuka
2CKA001751A2931	Rocker with legend Symbol "light" for Switch/push button, Single rocker anthracite - 63x63	1789 LI-81	1	sztuka
2CKA001751A3147	Rocker None for Switch/push button, Single rocker anthracite - 63x63	1789 N-81	1	sztuka
2CKA001751A3157	Rocker with legend Symbol "plug" for Switch/push button, Single rocker anthracite - 63x63	1789 ST-81	1	sztuka
2CKA001751A2933	Rocker with legend Symbol "key" for Switch/push button, Single rocker anthracite - 63x63	1789 TR-81	1	sztuka
2CKA001751A2928	Rocker for Switch/push button, Single rocker anthracite - 63x63	1789-81	1	sztuka
2CKA001710A3639	Cover plate with legend Card, Symbol "arrows" Hotel card anthracite - 63x63	1792-81	1	sztuka
2CKA001710A3695	Cover plate with legend Characters 1 ... 6 for Thermostat Turn button anthracite - 63x63	1794 TA-81	1	sztuka
2CKA001710A3629	Cover plate with legend Characters 1 ... 6 for Thermostat Turn button anthracite - 63x63	1794-81	1	sztuka
2CKA001710A4045	Cover plate with legend Characters 1 ... 6 for Thermostat Turn button 1 sliding switch anthracite - 63x63	1795 HKEA-81	1	sztuka
2CKA001710A3722	Cover plate with legend Characters 1 ... 6 for Thermostat Turn button 1 sliding switch anthracite - 63x63	1795 TA-81	1	sztuka
2CKA001710A3630	Cover plate with legend Characters 1 ... 6 for Thermostat Turn button 1 sliding switch anthracite - 63x63	1795-81	1	sztuka
2CKA001753A0308	Cover plate for Pull-cord switch, Pull cord anthracite - 63x63	1796-81	1	sztuka
2CKA001710A3627	Cover plate with labelling field Modular Jack 2 gang anthracite - 63x63	1800-81	1	sztuka
2CKA001710A3615	Cover plate with labelling field UAE//AE (ISDN) 2 gang anthracite - 63x63	1803-02-81	1	sztuka
2CKA001710A3616	Cover plate with labelling field UAE//AE (ISDN) 1 gang anthracite - 63x63	1803-81	1	sztuka
2CKA002013A5404	Busch-Object socket outlet SCHUKO® socket insert Without imprint Safety Shutter anthracite - 63x63	20 EUAB-81	1	sztuka
2CKA002011A6215	Socket Outlets Without imprint anthracite - 63x63	20 EUC-81-500	1	sztuka
2CKA002013A5415	Busch-Service-Socket SCHUKO® socket insert Without imprint Safety Shutter anthracite - 63x63	20 EUCBDR-81	1	sztuka
2CKA002013A5457	SCHUKO® socket insert Without imprint Safety Shutter withControl light; LED /Green anthracite - 63x63	20 EUCBL-81	1	sztuka

2CKA002013A5459	Busch-steplight SCHUKO® socket insert Without imprint Safety Shutter Protective contact (SCHUKO) with Night light; LED /White anthracite - 63x63	20 EUCBLI-81	1	sztuka
2CKA002013A5266	SCHUKO® Socket insert with legend EDV Safety Shutter anthracite - 63x63	20 EUCKS/DV-81	1	sztuka
2CKA002013A5265	SCHUKO® socket insert Without imprint Safety Shutter anthracite - 63x63	20 EUCKS-81	1	sztuka
2CKA002013A5427	SCHUKO® Socket insert with labelling field Without imprint Safety Shutter anthracite - 63x63	20 EUCNB-81	1	sztuka
2CKA002013A5437	SCHUKO® socket insert Without imprint Safety Shutter anthracite - 63x63	20 EUCRB-81	1	sztuka
2CKA002018A1486	SCHUKO® socket insert Without imprint with Hinged Lid anthracite - 63x63	20 EUK-81	1	sztuka
2CKA002018A1517	SCHUKO® socket insert Without imprint Safety Shutter with Hinged Lid anthracite - 63x63	20 EUKB-81	1	sztuka
2CKA002018A1526	SCHUKO® socket insert Without imprint Safety Shutter with Hinged Lid anthracite - 63x63	20 EUKBR-81	1	sztuka
2CKA002018A1537	SCHUKO® Socket insert with labelling field Without imprint Safety Shutter with Hinged Lid anthracite - 63x63	20 EUKNB-81	1	sztuka
2CKA002018A1548	SCHUKO® Socket insert with labelling field Without imprint Safety Shutter with Hinged Lid anthracite - 63x63	20 EUKNBL-81	1	sztuka
2CKA002018A1557	SCHUKO® Socket insert with labelling field Without imprint Safety Shutter with Hinged Lid and Cylinder Lock with different locking anthracite - 63x63	20 EUKNBSL-81	1	sztuka
2CKA002018A1558	SCHUKO® Socket insert with labelling field Without imprint Safety Shutter with Hinged Lid and Cylinder Lock with simultaneous locking anthracite - 63x63	20 EUKNBSL-81-101	1	sztuka
2CKA002011A3802	SCHUKO® Socket insert with labelling field Without imprint anthracite - 63x63	20 EUN-81	1	sztuka
2CKA001751A3167	Bell push-switch DND / MUR insert DND, MUR and Symbol "bell" Single push button 1 pole, 1NO anthracite - 63x63	2029 UC-81	1	sztuka
2CKA002495A0084	Equipotential socket insert Socket outlet 2-position anthracite - 63x63	2095 UC-81	1	sztuka
2CKA002190A0216	Socket Outlets Without imprint British Standard anthracite - 63x63	2190 EUC-81	1	sztuka
2CKA002013A5474	SCHUKO® socket insert Without imprint Safety Shutter anthracite - 63x63	23 EUCEB-81	1	sztuka
2CKA002013A5448	SCHUKO® socket insert Without imprint Safety Shutter anthracite - 63x63	2300 EUCEB-81	1	sztuka
2CKA002113A5339	Socket Outlets Without imprint Safety Shutter anthracite - 63x63	2300 UCRKS-81-503	1	sztuka
2CKA002011A3830	Busch-Protector® SCHUKO® socket insert Without imprint anthracite - 63x63	2310 EUGL/VA-81-11	1	sztuka
2CKA002013A5357	2398 CKS-81 Cover plate shuttered	2398 CKS-81	1	sztuka
2CKA002099A0216	Socket Outlets Without imprint Safety Shutter anthracite - 63x63	2399 UCKS-81	1	sztuka
2CKA001719A0217	Intermediate Ring with Hinged Lid for cover plates Busch-Balance® SI 1 gang with Sealing Ring anthracite - 63x63	2518-WD-81	1	sztuka

2CKA001751A3176	Rocker with legend Symbol "bell" for Switch/push button, Single rocker anthracite - 63x63	2520 KI-81	1	sztuka
2CKA001751A3186	Rocker with legend Symbol "light" for Switch/push button, Single rocker anthracite - 63x63	2520 LI-81	1	sztuka
2CKA001751A3196	Rocker with legend Symbol "key" for Switch/push button, Single rocker anthracite - 63x63	2520 TR-81	1	sztuka
2CKA001724A4254	Cover plate Bore hole 1 gang anthracite - 63x63	2533-81	1	sztuka
2CKA001710A3644	Cover plate with legend Symbol "0-1-2-3" for Level switch, Turn button anthracite - 63x63	2542 DR/01-81	1	sztuka
2CKA001710A3649	Cover plate with legend Symbol "1-2-3" for Level switch, Turn button anthracite - 63x63	2542 DR/02-81	1	sztuka
2CKA001724A4399	Cover plate XLR 1 gang anthracite - 63x63	2553-81	1	sztuka
2CKA001753A0317	Cover plate Modular Jack 2 gang anthracite - 63x63	2561-02-81	1	sztuka
2CKA001753A0400	Cover plate Modular Jack 1 gang anthracite - 63x63	2561-81	1	sztuka
2CKA003116A0667	FI-Schukomat SCHUKO® socket insert Without imprint Safety Shutter anthracite - 63x63	3120 EUCEB-81	1	sztuka
2CKA003117A0009	Buschmat RCD - Insert RCD 30 mA anthracite - 63x63	3151 UC-81	1	sztuka
2CKA006115A0483	6108/61-81-500 Coverplate f. CE	6108/61-81-500	1	sztuka
2CKA006155A0060	6109/03-81-500 Coverplate f. RTC	6109/03-81-500	1	sztuka
2CKA006132A0376	Reflex SI / Busch-Duro 2000SI for Push Button Coupling Units Horizontal 0 ... 180 ° anthracite	6122/10-81-500	1	sztuka
2CKA006115A0205	6125/01-81-500 Control element 1g w. BAU	6125/01-81-500	1	sztuka
2CKA006115A0216	6125/02-81-500 Control element 1/2gang	6125/02-81-500	1	sztuka
2CKA006116A0195	6126/01-81-500 Control element 2g w. BAU	6126/01-81-500	1	sztuka
2CKA006116A0206	6126/02-81-500 Control element 2/4gang	6126/02-81-500	1	sztuka
2CKA006117A0221	6127/01-81-500 Control element 4g w. BAU	6127/01-81-500	1	sztuka
2CKA006117A0232	6127/02-81-500 Control element 4/8gang	6127/02-81-500	1	sztuka
2CKA006134A0331	6128/28-81-500 RTC Control element 2/4g	6128/28-81-500	1	sztuka
2CKA006135A0156	6129/01-81-500 Control element 3/6g w. IR	6129/01-81-500	1	sztuka
2CKA006430A0326	Busch-Jalousiecontrol® II Control element with legend Symbol "arrows" for Venetian blind One-part rocker anthracite - 63x63	6430-81-102	1	sztuka
2CKA006430A0303	Cover plate with legend Symbol "arrows" and "ok" for Time switch Central cover plate anthracite - 63x63	6435-81	1	sztuka
2CKA006400A0056	Cover plate PowerDock 1 gang anthracite - 63x63	6477-81	1	sztuka
2CKA006599A2950	Cover plate None for Dimmer Turn button with Neon lamp anthracite - 63x63	6540-81-102	1	sztuka
2CKA006599A2882	Cover plate None for Cooling Central cover plate anthracite - 63x63	6541-81	1	sztuka

2CKA006599A2881	Control Element None for Switch/dimmer Single push button anthracite - 63x63	6543-81-101	1	sztuka
2CKA006599A2906	Control Element None for Dimmer Two-part button with Neon lamp anthracite - 63x63	6545-81	1	sztuka
2CKA006730A0133	Control Element None for Dimmer Two-part button anthracite - 63x63	6736 FoH-81	1	sztuka
2CKA008200A0078	Cover plate Loudspeaker anthracite - 63x63	8253-81	1	sztuka
2CKA008300A0226	83260-81-515 Cover plates, Indoor St.	83260-81-515	1	sztuka
2CKA006220A0242	CP-FCC-81 C-plate Fan Coil	CP-FCC-81	1	sztuka
2CKA006220A0179	CP-RTC-81 C-plate RT sensor unit	CP-RTC-81	1	sztuka
2CKA006220A0212	MD-F-1.0.1-81 Movement detector	MD-F-1.0.1-81	1	sztuka
2CKA006220A0215	MSA-F-1.1.1-81 Mov. detector/actuator 1g	MSA-F-1.1.1-81	1	sztuka
2CKA006200A0083	MSA-F-1.1.1-81-WL WL-Mov. detector/act. 1g	MSA-F-1.1.1-81-WL	1	sztuka
2CKA006220A0137	Electronic Controls anthracite - 63x63	SR-1-81	1	sztuka
2CKA006220A0152	Electronic Controls anthracite - 63x63	SR-2-81	1	sztuka
2CKA006220A0143	Electronic Controls anthracite - 63x63	SRB-1-81	1	sztuka
2CKA006220A0158	Electronic Controls anthracite - 63x63	SRB-2-81	1	sztuka
2CKA006220A0149	Electronic Controls anthracite - 63x63	SRD-1-81	1	sztuka
2CKA006220A0164	Electronic Controls anthracite - 63x63	SRD-2-L-81	1	sztuka
2CKA006220A0258	Electronic Controls anthracite - 63x63	SRD-2-R-81	1	sztuka
2CKA006220A0140	Electronic Controls anthracite - 63x63	SRL-1-81	1	sztuka
2CKA006220A0155	Electronic Controls anthracite - 63x63	SRL-2-L-81	1	sztuka
2CKA006220A0167	Electronic Controls anthracite - 63x63	SRL-2-R-81	1	sztuka
2CKA006220A0146	Electronic Controls anthracite - 63x63	SRS-1-81	1	sztuka
2CKA006220A0161	Electronic Controls anthracite - 63x63	SRS-2-L-81	1	sztuka
2CKA006220A0173	Electronic Controls anthracite - 63x63	SRS-2-R-81	1	sztuka
2CKA001582A0346	Cover plate with labelling field Busch-Infoline® Single push button studio white - 63x63	1571 CN-84	1	sztuka
2CKA001582A0348	Cover plate with labelling field Busch-Infoline® Single push button Przezroczysty studio white - 63x63	1572 CN-84	1	sztuka
2CKA001582A0350	Cover plate with labelling field Busch-Infoline® Central cover plate studio white - 63x63	1573 CN-84	1	sztuka
2CKA001582A0353	Cover plate with labelling field Busch-Infoline® Central cover plate studio white - 63x63	1575 CN-84	1	sztuka
2CKA001582A0355	Cover plate with labelling field Busch-Infoline® Central cover plate studio white - 63x63	1576 CN-84	1	sztuka
2CKA001731A1976	Cover Busch-Infolicht® grey metallic - 63x63	1716-803	1	sztuka
2CKA001731A1922	Cover Busch-Infolicht® ivory white - 63x63	1716-82	1	sztuka
2CKA001731A1950	Cover Busch-Infolicht® aluminium silver - 63x63	1716-83	1	sztuka
2CKA001731A1923	Cover Busch-Infolicht® studio white - 63x63	1716-84	1	sztuka
2CKA001731A1955	Cover Busch-Infolicht® stainless steel - Pure Stainless Steel	1716-866	1	sztuka
2CKA001731A1978	Cover Busch-Infolicht® studio white matt - 63x63	1716-884	1	sztuka
2CKA001731A1980	Cover Busch-Infolicht® black matt - 63x63	1716-885	1	sztuka
2CKA001731A1915	Rocker None for Pull-cord switch, Pull cord ivory white - 63x63	1720-82	1	sztuka

2CKA001731A1949	Rocker for Pull-cord switch, Pull cord aluminium silver - 63x63	1720-83	1	sztuka
2CKA001731A1916	Rocker None for Pull-cord switch, Pull cord studio white - 63x63	1720-84	1	sztuka
2CKA001731A1954	Rocker None for Pull-cord switch, Pull cord stainless steel - Pure Stainless Steel	1720-866	1	sztuka
2CKA001731A1979	Rocker None for Pull-cord switch, Pull cord studio white matt - 63x63	1720-884	1	sztuka
2CKA001731A1981	Rocker None for Pull-cord switch, Pull cord black matt - 63x63	1720-885	1	sztuka
2CKA001710A4119	Cover plate with legend Level switch Turn button grey metallic - 63x63	1740 DR/03-803	1	sztuka
2CKA001710A3807	Cover plate with legend Level switch Turn button ivory white - 63x63	1740 DR/03-82	1	sztuka
2CKA001710A3811	Cover plate with legend Level switch Turn button aluminium silver - 63x63	1740 DR/03-83	1	sztuka
2CKA001710A3808	Cover plate with legend Level switch Turn button studio white - 63x63	1740 DR/03-84	1	sztuka
2CKA001710A3812	Cover plate with legend Level switch Turn button stainless steel - Pure Stainless Steel	1740 DR/03-866	1	sztuka
2CKA001710A3870	Cover plate with legend Level switch Turn button studio white matt - 63x63	1740 DR/03-884	1	sztuka
2CKA001710A3892	Cover plate with legend Level switch Turn button black matt - 63x63	1740 DR/03-885	1	sztuka
2CKA001710A4121	Mechanical Controls Symbol "2-1-3" for Level switch, Turn button grey metallic - 63x63	1740 DRL-803-503	1	sztuka
2CKA001710A3511	Mechanical Controls Symbol "2-1-3" for Level switch, Turn button ivory white - 63x63	1740 DRL-82-503	1	sztuka
2CKA001710A4123	Mechanical Controls Symbol "2-1-3" for Level switch, Turn button aluminium silver - 63x63	1740 DRL-83-503	1	sztuka
2CKA001710A3512	Cover plate Symbol "2-1-3" for Level switch, Turn button studio white - 63x63	1740 DRL-84-503	1	sztuka
2CKA001710A3771	Mechanical Controls Symbol "2-1-3" for Level switch, Turn button stainless steel - Pure Stainless Steel	1740 DRL-866-503	1	sztuka
2CKA001710A3871	Mechanical Controls Symbol "2-1-3" for Level switch, Turn button studio white matt - 63x63	1740 DRL-884-503	1	sztuka
2CKA001710A3893	Mechanical Controls Symbol "2-1-3" for Level switch, Turn button black matt - 63x63	1740 DRL-885-503	1	sztuka
2CKA001710A3840	Cover plate with legend Symbol "arrows" for Venetian blind, Turn button grey metallic - 63x63	1740-803	1	sztuka
2CKA001710A3154	Cover plate with legend Symbol "arrows" for Venetian blind, Turn button ivory white - 63x63	1740-82	1	sztuka
2CKA001710A3661	Cover plate with legend Symbol "arrows" for Venetian blind, Turn button aluminium silver - 63x63	1740-83	1	sztuka
2CKA001710A3172	Cover plate with legend Symbol "arrows" for Venetian blind, Turn button studio white - 63x63	1740-84	1	sztuka
2CKA001710A3748	Cover plate with legend Symbol "arrows" for Venetian blind, Turn button stainless steel - Pure Stainless Steel	1740-866	1	sztuka
2CKA001710A3872	Cover plate with legend Symbol "arrows" for Venetian blind, Turn button studio white matt - 63x63	1740-884	1	sztuka

2CKA001710A3894	Cover plate with legend Symbol "arrows" for Venetian blind, Turn button black matt - 63x63	1740-885	1	sztuka
2CKA001710A3843	Cover plate Blind cap 1 gang with Mounting plate grey metallic - 63x63	1742-803	1	sztuka
2CKA001710A3143	Cover plate Blind cap 1 gang with Mounting plate ivory white - 63x63	1742-82	1	sztuka
2CKA001710A3664	Cover plate Blind cap 1 gang with Mounting plate aluminium silver - 63x63	1742-83	1	sztuka
2CKA001710A3161	Cover plate Blind cap 1 gang with Mounting plate studio white - 63x63	1742-84	1	sztuka
2CKA001710A3991	Cable Outlet / Blank Plate / Adapter Ring Blind cap 0 gang studio white - 63x63	1742-84-500	1	sztuka
2CKA001710A3751	Cover plate Blind cap 1 gang with Mounting plate stainless steel - Pure Stainless Steel	1742-866	1	sztuka
2CKA001710A3873	Cover plate Blind cap 1 gang with Mounting plate studio white matt - 63x63	1742-884	1	sztuka
2CKA001710A3895	Cover plate Blind cap 1 gang with Mounting plate black matt - 63x63	1742-885	1	sztuka
2CKA001724A4364	Cover plate SAT 4 gang grey metallic - 63x63	1743/10-04-803	1	sztuka
2CKA001724A4366	Cover plate SAT 4 gang ivory white - 63x63	1743/10-04-82	1	sztuka
2CKA001724A4367	Cover plate SAT 4 gang aluminium silver - 63x63	1743/10-04-83	1	sztuka
2CKA001724A4368	Cover plate SAT 4 gang studio white - 63x63	1743/10-04-84	1	sztuka
2CKA001724A4369	Cover plate SAT 4 gang stainless steel - Pure Stainless Steel	1743/10-04-866	1	sztuka
2CKA001724A4370	Cover plate TV / Radio / 2x SAT 4 gang studio white matt - 63x63	1743/10-04-884	1	sztuka
2CKA001724A4371	Cover plate SAT 4 gang black matt - 63x63	1743/10-04-885	1	sztuka
2CKA001724A4373	Cover plate TV / Radio / 2x SAT 4 gang grey metallic - 63x63	1743-04-803	1	sztuka
2CKA001724A4375	Cover plate TV / Radio / 2x SAT 4 gang ivory white - 63x63	1743-04-82	1	sztuka
2CKA001724A4376	Cover plate SAT 4 gang aluminium silver - 63x63	1743-04-83	1	sztuka
2CKA001724A4377	Cover plate TV / Radio / 2x SAT 4 gang studio white - 63x63	1743-04-84	1	sztuka
2CKA001724A4378	Cover plate SAT 4 gang stainless steel - Pure Stainless Steel	1743-04-866	1	sztuka
2CKA001724A4379	Cover plate TV / Radio / 2x SAT 4 gang studio white matt - 63x63	1743-04-884	1	sztuka
2CKA001724A4380	Cover plate SAT 4 gang black matt - 63x63	1743-04-885	1	sztuka
2CKA001724A4291	Cover plate SAT 3 gang grey metallic - 63x63	1743-803	1	sztuka
2CKA001724A2758	Cover plate SAT 3 gang ivory white - 63x63	1743-82	1	sztuka
2CKA001724A4262	Cover plate SAT 3 gang aluminium silver - 63x63	1743-83	1	sztuka
2CKA001724A4332	Data / Telecommunication / Antenna SAT 3 gang studio white - 63x63	1743-84-500	1	sztuka
2CKA001724A4271	Cover plate SAT 3 gang stainless steel - Pure Stainless Steel	1743-866	1	sztuka
2CKA001724A4293	Cover plate SAT 3 gang studio white matt - 63x63	1743-884	1	sztuka
2CKA001724A4298	Cover plate SAT 3 gang black matt - 63x63	1743-885	1	sztuka
2CKA001710A3855	Cover plate telephone connector boxes (VDo) grey metallic - 63x63	1745-803	1	sztuka

2CKA001710A3155	Cover plate telephone connector boxes (VDo) ivory white - 63x63	1745-82	1	sztuka
2CKA001710A3675	Cover plate telephone connector boxes (VDo) aluminium silver - 63x63	1745-83	1	sztuka
2CKA001710A3173	Cover plate Busch-Infoline® telephone connector boxes (VDo) Central cover plate studio white - 63x63	1745-84	1	sztuka
2CKA001710A3766	Cover plate telephone connector boxes (VDo) stainless steel - Pure Stainless Steel	1745-866	1	sztuka
2CKA001710A3874	Cover plate telephone connector boxes (VDo) studio white matt - 63x63	1745-884	1	sztuka
2CKA001710A3896	Cover plate telephone connector boxes (VDo) black matt - 63x63	1745-885	1	sztuka
2CKA001710A3857	Cover plate Telecommunication inserts 50 x 50 mm grey metallic - 63x63	1746/10-803	1	sztuka
2CKA001710A3521	Cover plate Telecommunication inserts 50 x 50 mm ivory white - 63x63	1746/10-82	1	sztuka
2CKA001710A3677	Cover plate Telecommunication inserts 50 x 50 mm aluminium silver - 63x63	1746/10-83	1	sztuka
2CKA001710A3993	Data / Telecommunication / Antenna Telecommunication inserts 0 gang studio white - 63x63	1746/10-84- 500	1	sztuka
2CKA001710A3768	Cover plate Telecommunication inserts 50 x 50 mm stainless steel - Pure Stainless Steel	1746/10-866	1	sztuka
2CKA001710A3875	Cover plate Telecommunication inserts 50 x 50 mm studio white matt - 63x63	1746/10-884	1	sztuka
2CKA001710A3897	Cover plate Telecommunication inserts 50 x 50 mm black matt - 63x63	1746/10-885	1	sztuka
2CKA001710A3858	Cover plate with Hinged Lid Telecommunication inserts 50 x 50 mm 1 gang grey metallic - 63x63	1746-803	1	sztuka
2CKA001710A3149	Cover plate with Hinged Lid Telecommunication inserts 50 x 50 mm 1 gang ivory white - 63x63	1746-82	1	sztuka
2CKA001710A3678	Cover plate with Hinged Lid Telecommunication inserts 50 x 50 mm 1 gang aluminium silver - 63x63	1746-83	1	sztuka
2CKA001710A3167	Cover plate with Hinged Lid Telecommunication inserts 50 x 50 mm 1 gang studio white - 63x63	1746-84	1	sztuka
2CKA001710A3769	Cover plate with Hinged Lid Telecommunication inserts 50 x 50 mm 1 gang stainless steel - Pure Stainless Steel	1746-866	1	sztuka
2CKA001710A3876	Cover plate with Hinged Lid Telecommunication inserts 50 x 50 mm 1 gang studio white matt - 63x63	1746-884	1	sztuka
2CKA001710A3898	Cover plate with Hinged Lid Telecommunication inserts 50 x 50 mm 1 gang black matt - 63x63	1746-885	1	sztuka
2CKA001710A3862	Intermediate Ring Cover plates Busch-Duro 2000® SI and Reflex SI ivory white - 63x63	1747 SI-82	1	sztuka
2CKA001710A3863	Intermediate Ring Cover plates Busch-Duro 2000® SI and Reflex SI studio white - 63x63	1747 SI-84	1	sztuka
2CKA001710A3860	Intermediate Ring Cover plates Busch-Duro 2000® SI and Reflex SI ivory white - 63x63	1747-82	1	sztuka
2CKA001710A3861	Intermediate Ring studio white - 63x63	1747-84	1	sztuka
2CKA001710A3844	Cover plate Cable outlet with Mounting plate grey metallic - 63x63	1749-803	1	sztuka

2CKA001710A3145	Cover plate Cable outlet with Mounting plate ivory white - 63x63	1749-82	1	sztuka
2CKA001710A3665	Cover plate Cable outlet with Mounting plate aluminium silver - 63x63	1749-83	1	sztuka
2CKA001710A3163	Cover plate Cable outlet studio white - 63x63	1749-84	1	sztuka
2CKA001710A3752	Cover plate Cable outlet with Mounting plate stainless steel - Pure Stainless Steel	1749-866	1	sztuka
2CKA001710A3878	Cover plate Cable outlet with Mounting plate studio white matt - 63x63	1749-884	1	sztuka
2CKA001710A3900	Cover plate Cable outlet with Mounting plate black matt - 63x63	1749-885	1	sztuka
2CKA001710A3679	Cover plate BNC/TNC 2 gang aluminium silver - 63x63	1750-83	1	sztuka
2CKA001723A0257	Cover plate Loudspeaker 2 gang grey metallic - 63x63	1751-803	1	sztuka
2CKA001723A0239	Cover plate Loudspeaker 2 gang ivory white - 63x63	1751-82	1	sztuka
2CKA001723A0254	Cover plate Loudspeaker 2 gang aluminium silver - 63x63	1751-83	1	sztuka
2CKA001723A0240	Cover plate Loudspeaker 2 gang studio white - 63x63	1751-84	1	sztuka
2CKA001723A0255	Cover plate Loudspeaker 2 gang stainless steel - Pure Stainless Steel	1751-866	1	sztuka
2CKA001723A0260	Cover plate Loudspeaker 2 gang studio white matt - 63x63	1751-884	1	sztuka
2CKA001723A0259	Cover plate Loudspeaker 2 gang black matt - 63x63	1751-885	1	sztuka
2CKA001710A3841	Cover plate with legend Symbol "arrows" or "0 - 1" for Venetian blind, Key grey metallic - 63x63	1755 SL/PZ-803-101	1	sztuka
2CKA001710A3157	Cover plate with legend Symbol "arrows" or "0 - 1" for Venetian blind, Key ivory white - 63x63	1755 SL/PZ-82-101	1	sztuka
2CKA001710A3662	Cover plate with legend Symbol "arrows" or "0 - 1" for Venetian blind, Key aluminium silver - 63x63	1755 SL/PZ-83-101	1	sztuka
2CKA001710A3175	Cover plate with legend Symbol "arrows" or "0 - 1" for Venetian blind, Key studio white - 63x63	1755 SL/PZ-84-101	1	sztuka
2CKA001710A3749	Cover plate with legend Symbol "arrows" or "0 - 1" for Venetian blind, Key stainless steel - Pure Stainless Steel	1755 SL/PZ-866-101	1	sztuka
2CKA001710A3925	Cover plate with legend Symbol "arrows" or "0 - 1" for Venetian blind, Key studio white matt - 63x63	1755 SL/PZ-884-101	1	sztuka
2CKA001710A3902	Cover plate with legend Symbol "arrows" or "0 - 1" for Venetian blind, Key black matt - 63x63	1755 SL/PZ-885-101	1	sztuka
2CKA001724A4292	Cover plate with labelling field For data connection housing 2 gang grey metallic - 63x63	1758-803	1	sztuka
2CKA001724A2759	Cover plate with labelling field For data connection housing 2 gang ivory white - 63x63	1758-82	1	sztuka
2CKA001724A4263	Cover plate with labelling field For data connection housing 2 gang aluminium silver - 63x63	1758-83	1	sztuka
2CKA001724A2761	Cover plate with labelling field For data connection housing 2 gang studio white - 63x63	1758-84	1	sztuka
2CKA001724A4272	Cover plate with labelling field For data connection housing 2 gang stainless steel - Pure Stainless Steel	1758-866	1	sztuka

2CKA001724A4307	Cover plate with labelling field For data connection housing 2 gang studio white matt - 63x63	1758-884	1	sztuka
2CKA001724A4299	Cover plate with labelling field For data connection housing 2 gang black matt - 63x63	1758-885	1	sztuka
2CKA001731A3997	Rocker with labelling field Symbol "bell" for Switch/push button, Single push button grey metallic - 63x63	1764 NLI/KI-803	1	sztuka
2CKA001731A3999	Rocker with labelling field and legend Symbol "bell" for Switch/push button, Single push button with Pilot lamp ivory white - 63x63	1764 NLI/KI-82	1	sztuka
2CKA001731A4000	Rocker with labelling field and legend Symbol "bell" for Switch/push button, Single push button with Pilot lamp aluminium silver - 63x63	1764 NLI/KI-83	1	sztuka
2CKA001731A4003	Rocker with labelling field and legend Symbol "bell" for Switch/push button, Single push button with Pilot lamp stainless steel - Pure Stainless Steel	1764 NLI/KI-866	1	sztuka
2CKA001731A4004	Rocker with labelling field and legend Symbol "bell" for Switch/push button, Single push button with Pilot lamp studio white matt - 63x63	1764 NLI/KI-884	1	sztuka
2CKA001731A4005	Rocker with labelling field and legend Symbol "bell" for Switch/push button, Single push button with Pilot lamp black matt - 63x63	1764 NLI/KI-885	1	sztuka
2CKA001731A4011	Rocker with labelling field for Switch/push button, Single push button with Pilot lamp red - 63x63	1764 NLI-12-82-101	1	sztuka
2CKA001731A4007	Rocker with labelling field for Switch/push button, Single push button with Pilot lamp green - 63x63	1764 NLI-13-82	1	sztuka
2CKA001731A1975	Rocker with labelling field for Switch/push button, Single rocker grey metallic - 63x63	1764 NLI-803	1	sztuka
2CKA001731A1876	Rocker with labelling field for Switch/push button, Single push button with Pilot lamp ivory white - 63x63	1764 NLI-82	1	sztuka
2CKA001731A1948	Rocker with labelling field for Switch/push button, Single push button with Pilot lamp aluminium silver - 63x63	1764 NLI-83	1	sztuka
2CKA001731A1877	Rocker with labelling field for Switch/push button, Single push button with Pilot lamp studio white - 63x63	1764 NLI-84	1	sztuka
2CKA001731A1953	Rocker with labelling field for Switch/push button, Single push button with Pilot lamp stainless steel - Pure Stainless Steel	1764 NLI-866	1	sztuka
2CKA001731A1985	Rocker with labelling field for Switch/push button, Single push button with Pilot lamp studio white matt - 63x63	1764 NLI-884	1	sztuka
2CKA001731A1982	Rocker with labelling field for Switch/push button, Single push button with Pilot lamp black matt - 63x63	1764 NLI-885	1	sztuka
2CKA001710A3854	Cover plate TAE 1 gang grey metallic - 63x63	1766-803	1	sztuka
2CKA001710A3144	Cover plate TAE 1 gang ivory white - 63x63	1766-82	1	sztuka
2CKA001710A3659	Cover plate TAE 1 gang aluminium silver - 63x63	1766-83	1	sztuka
2CKA001710A3992	Data / Telecommunication / Antenna TAE 0 gang studio white - 63x63	1766-84-500	1	sztuka
2CKA001710A3765	Cover plate TAE 1 gang stainless steel - Pure Stainless Steel	1766-866	1	sztuka
2CKA001710A3926	Cover plate TAE 1 gang studio white matt - 63x63	1766-884	1	sztuka

2CKA001710A3903	Cover plate TAE 1 gang black matt - 63x63	1766-885	1	sztuka
2CKA001753A0254	Cover plate 1 ... 15 Min for Time switch, Toggle grey metallic - 63x63	1770-803-103	1	sztuka
2CKA001753A0256	Cover plate with legend 1 ... 15 Min for Time switch, Toggle white - 63x63	1770-82-103	1	sztuka
2CKA001753A0257	Cover plate with legend 1 ... 15 Min for Time switch, Toggle aluminium - 63x63	1770-83-103	1	sztuka
2CKA001753A0258	Cover plate with legend 1 ... 15 Min for Time switch, Toggle studio white - 63x63	1770-84-103	1	sztuka
2CKA001753A0259	Cover plate with legend 1 ... 15 Min for Time switch, Toggle stainless steel - Pure Stainless Steel	1770-866-103	1	sztuka
2CKA001753A0260	Cover plate with legend 1 ... 15 Min for Time switch, Toggle studio white matt - 63x63	1770-884-103	1	sztuka
2CKA001753A0261	Cover plate with legend 1 ... 15 Min for Time switch, Toggle black matt - 63x63	1770-885-103	1	sztuka
2CKA001753A0264	Cover plate Time indication for Time switch, Turn button grey metallic - 63x63	1771-803-103	1	sztuka
2CKA001753A0266	Cover plate with legend 10 ... 120 Min for Time switch, Toggle white - 63x63	1771-82-103	1	sztuka
2CKA001753A0267	Cover plate with legend 10 ... 120 Min for Time switch, Toggle aluminium - 63x63	1771-83-103	1	sztuka
2CKA001753A0301	Cover plate with legend 10 ... 120 Min for Time switch, Toggle studio white - 63x63	1771-84-103	1	sztuka
2CKA001753A0302	Cover plate with legend 10 ... 120 Min for Time switch, Toggle stainless steel - Pure Stainless Steel	1771-866-103	1	sztuka
2CKA001753A0303	Cover plate with legend 10 ... 120 Min for Time switch, Toggle studio white matt - 63x63	1771-884-103	1	sztuka
2CKA001753A0304	Cover plate with legend 10 ... 120 Min for Time switch, Toggle black matt - 63x63	1771-885-103	1	sztuka
2CKA001751A2978	Multimedia Devices ivory white	1785 ENO-82	1	sztuka
2CKA001751A2979	Multimedia Devices aluminium silver	1785 ENO-83	1	sztuka
2CKA001751A2980	Multimedia Devices studio white	1785 ENO-84	1	sztuka
2CKA001751A3101	Rocker with legend Symbol "arrows" for Venetian blind, Two-part rocker ivory white - carat	1785 JA/02-82	1	sztuka
2CKA001751A3097	Rocker with legend Symbol "arrows" for Venetian blind, Two-part rocker aluminium silver - 63x63	1785 JA/02-83	1	sztuka
2CKA001751A3099	Rocker with legend Symbol "arrows" for Venetian blind, Two-part rocker studio white - 63x63	1785 JA/02-84	1	sztuka
2CKA001751A3103	Rocker with legend Symbol "arrows" for Venetian blind, Two-part rocker studio white matt - 63x63	1785 JA/02-884	1	sztuka
2CKA001751A3105	Rocker with legend Symbol "arrows" for Venetian blind, Two-part rocker black matt - 63x63	1785 JA/02-885	1	sztuka
2CKA001751A3020	Rocker with legend Symbol "arrows" for Venetian blind, Two-part rocker grey metallic - 63x63	1785 JA-803	1	sztuka
2CKA001751A2748	Rocker with legend Symbol "arrows" for Venetian blind, Two-part rocker ivory white - 63x63	1785 JA-82	1	sztuka
2CKA001751A2944	Rocker with legend Symbol "arrows" for Venetian blind, Two-part rocker aluminium silver - 63x63	1785 JA-83	1	sztuka
2CKA001751A3088	Mechanical Controls Symbol "arrows" for Venetian blind, Two-part rocker studio white - 63x63	1785 JA-84-500	1	sztuka

2CKA001751A2964	Rocker with legend Symbol "arrows" for Venetian blind, Two-part rocker stainless steel - Pure Stainless Steel	1785 JA-866	1	sztuka
2CKA001751A3022	Rocker with legend Symbol "arrows" for Venetian blind, Two-part rocker studio white matt - 63x63	1785 JA-884	1	sztuka
2CKA001751A3036	Rocker with legend Symbol "arrows" for Venetian blind, Two-part rocker black matt - 63x63	1785 JA-885	1	sztuka
2CKA001751A3126	Mechanical Controls None for Switch/push button, Two-part rocker aluminium silver - 63x63	1785 K-83-500	1	sztuka
2CKA001751A3128	Mechanical Controls None for Switch/push button, Two-part rocker studio white - 63x63	1785 K-84-500	1	sztuka
2CKA001751A3204	Rocker with legend DND, MUR for Switch/push button, Single rocker grey metallic - 63x63	1785/11-803	1	sztuka
2CKA001751A2991	Rocker with legend DND, MUR for Switch/push button, Two-part rocker ivory white - 63x63	1785/11-82	1	sztuka
2CKA001751A2995	Rocker with legend DND, MUR for Switch/push button, Two-part rocker aluminium silver - 63x63	1785/11-83	1	sztuka
2CKA001751A2992	Rocker with legend DND, MUR for Switch/push button, Two-part rocker studio white - 63x63	1785/11-84	1	sztuka
2CKA001751A2996	Rocker with legend DND, MUR for Switch/push button, Two-part rocker stainless steel - Pure Stainless Steel	1785/11-866	1	sztuka
2CKA001751A3023	Rocker with legend DND, MUR for Switch/push button, Two-part rocker studio white matt - 63x63	1785/11-884	1	sztuka
2CKA001751A3037	Rocker with legend DND, MUR for Switch/push button, Two-part rocker black matt - 63x63	1785/11-885	1	sztuka
2CKA001751A3018	Rocker for Switch/push button, Two-part rocker grey metallic - 63x63	1785-803	1	sztuka
2CKA001751A2744	Rocker for Switch/push button, Two-part rocker ivory white - 63x63	1785-82	1	sztuka
2CKA001751A2942	Rocker None for Switch/push button, Two-part rocker aluminium silver - 63x63	1785-83	1	sztuka
2CKA001751A3092	Mechanical Controls Without imprint for Switch/push button, Two-part rocker aluminium silver - 63x63	1785-83-500	1	sztuka
2CKA001751A3076	Mechanical Controls Without imprint for Switch/push button, Two-part rocker studio white - 63x63	1785-84-500	1	sztuka
2CKA001751A3087	Mechanical Controls Without imprint for Switch/push button, Two-part rocker stainless steel - Pure Stainless Steel	1785-866-500	1	sztuka
2CKA001751A3024	Rocker for Switch/push button, Two-part rocker studio white matt - 63x63	1785-884	1	sztuka
2CKA001751A3038	Rocker None for Switch/push button, Two-part rocker black matt - 63x63	1785-885	1	sztuka
2CKA001751A2966	Multimedia Devices ivory white	1786 ENO-82	1	sztuka
2CKA001751A2967	Multimedia Devices aluminium silver	1786 ENO-83	1	sztuka
2CKA001751A2968	Multimedia Devices studio white	1786 ENO-84	1	sztuka
2CKA001751A3100	Rocker with legend Symbol "arrows" for Venetian blind, Single rocker ivory white - carat	1786 JA/02-82	1	sztuka
2CKA001751A3096	Rocker with legend Symbol "arrows" for Switch/push button, aluminium silver - 63x63	1786 JA/02-83	1	sztuka
2CKA001751A3098	Rocker with legend Symbol "arrows" for Venetian blind, Single rocker studio white - 63x63	1786 JA/02-84	1	sztuka

2CKA001751A3102	Rocker with legend Symbol "arrows" for Venetian blind, Single rocker studio white matt - 63x63	1786 JA/02-884	1	sztuka
2CKA001751A3104	Rocker with legend Symbol "arrows" black matt - 63x63	1786 JA/02-885	1	sztuka
2CKA001751A2997	Rocker with legend DND for Switch/push button, Single rocker ivory white - 63x63	1786/11-82	1	sztuka
2CKA001751A3001	Rocker with legend DND for Switch/push button, Single rocker aluminium silver - 63x63	1786/11-83	1	sztuka
2CKA001751A2998	Rocker with legend DND for Switch/push button, Single rocker studio white - 63x63	1786/11-84	1	sztuka
2CKA001751A3002	Rocker with legend DND for Switch/push button, Single rocker stainless steel - Pure Stainless Steel	1786/11-866	1	sztuka
2CKA001751A3026	Rocker with legend DND for Switch/push button, Single rocker studio white matt - 63x63	1786/11-884	1	sztuka
2CKA001751A3040	Rocker with legend DND for Switch/push button, Single rocker black matt - 63x63	1786/11-885	1	sztuka
2CKA001751A3145	Rocker None for Switch/push button, Single rocker red - 63x63	1786-12-82	1	sztuka
2CKA001751A3093	Mechanical Controls Without imprint for Switch/push button, Single rocker grey metallic - 63x63	1786-803-500	1	sztuka
2CKA001751A3083	Mechanical Controls Without imprint for Switch/push button, Single rocker ivory white - 63x63	1786-82-500	1	sztuka
2CKA001751A3075	Mechanical Controls Without imprint for Switch/push button, Single rocker aluminium silver - 63x63	1786-83-500	1	sztuka
2CKA001751A3074	Mechanical Controls Without imprint for Switch/push button, Single rocker studio white - 63x63	1786-84-500	1	sztuka
2CKA001751A3077	Mechanical Controls Without imprint for Switch/push button, Single rocker stainless steel - Pure Stainless Steel	1786-866-500	1	sztuka
2CKA001751A3089	Mechanical Controls Without imprint for Switch/push button, Single rocker studio white matt - 63x63	1786-884-500	1	sztuka
2CKA001751A3094	Mechanical Controls Without imprint for Switch/push button, Single rocker black matt - 63x63	1786-885-500	1	sztuka
2CKA001751A3017	Rocker for Switch/push button, Single rocker grey metallic - 63x63	1788-803	1	sztuka
2CKA001751A2742	Rocker None for Switch/push button, Single rocker ivory white - 63x63	1788-82	1	sztuka
2CKA001751A2954	Rocker with legend Characters 0 and 1 for Switch/push button, Single rocker aluminium silver - 63x63	1788-83	1	sztuka
2CKA001751A2750	Rocker None for Switch/push button, Single rocker studio white - 63x63	1788-84	1	sztuka
2CKA001751A2961	Rocker None for Switch/push button, Single rocker stainless steel - Pure Stainless Steel	1788-866	1	sztuka
2CKA001751A3028	Rocker None for Switch/push button, Single rocker studio white matt - 63x63	1788-884	1	sztuka
2CKA001751A3042	Rocker None for Switch/push button, Single rocker black matt - 63x63	1788-885	1	sztuka

2CKA001751A3019	Rocker with legend Heizung for Switch/push button, Single rocker grey metallic - 63x63	1789 H-803	1	sztuka
2CKA001751A2743	Rocker with legend Heizung for Switch/push button, Single rocker ivory white - 63x63	1789 H-82	1	sztuka
2CKA001751A2955	Rocker with legend Heizung for Switch/push button, Single rocker aluminium silver - 63x63	1789 H-83	1	sztuka
2CKA001751A2751	Rocker with legend Heizung for Switch/push button, Single rocker studio white - 63x63	1789 H-84	1	sztuka
2CKA001751A2963	Rocker with legend Heizung for Switch/push button, Single rocker stainless steel - Pure Stainless Steel	1789 H-866	1	sztuka
2CKA001751A3029	Rocker with legend Heizung for Switch/push button, Single rocker studio white matt - 63x63	1789 H-884	1	sztuka
2CKA001751A3043	Rocker with legend Heizung for Switch/push button, Single rocker black matt - 63x63	1789 H-885	1	sztuka
2CKA001751A3015	Rocker for Switch/push button, Single rocker grey metallic - 63x63	1789 KI-803	1	sztuka
2CKA001751A2746	Rocker with legend Symbol "bell" for Switch/push button, Single rocker ivory white - 63x63	1789 KI-82	1	sztuka
2CKA001751A2952	Rocker with legend Symbol "key/door" for Switch/push button, Single rocker aluminium silver - 63x63	1789 KI-83	1	sztuka
2CKA001751A2754	Rocker with legend Symbol "bell" for Switch/push button, Single rocker studio white - 63x63	1789 KI-84	1	sztuka
2CKA001751A2959	Rocker with legend Symbol "bell" for Switch/push button, Single rocker stainless steel - Pure Stainless Steel	1789 KI-866	1	sztuka
2CKA001751A3030	Rocker with legend Symbol "bell" for Switch/push button, Single rocker studio white matt - 63x63	1789 KI-884	1	sztuka
2CKA001751A3044	Rocker with legend Symbol "bell" for Switch/push button, Single rocker black matt - 63x63	1789 KI-885	1	sztuka
2CKA001751A3014	Rocker with legend Symbol "light" for Switch/push button, Single rocker grey metallic - 63x63	1789 LI-803	1	sztuka
2CKA001751A2745	Rocker with legend Symbol "light" for Switch/push button, Single rocker ivory white - 63x63	1789 LI-82	1	sztuka
2CKA001751A2951	Rocker with legend Symbol "light" for Switch/push button, Single rocker aluminium silver - 63x63	1789 LI-83	1	sztuka
2CKA001751A3084	Mechanical Controls Symbol "light" for Switch/push button, Single rocker studio white - 1789 LI-84-500 63x63		1	sztuka
2CKA001751A2958	Rocker with legend Symbol "light" for Switch/push button, Single rocker stainless steel - Pure Stainless Steel	1789 LI-866	1	sztuka
2CKA001751A3031	Rocker with legend Symbol "light" for Switch/push button, Single rocker studio white matt - 63x63	1789 LI-884	1	sztuka
2CKA001751A3045	Rocker with legend Symbol "light" for Switch/push button, Single rocker black matt - 63x63	1789 LI-885	1	sztuka
2CKA001751A3146	Rocker for Switch/push button, Single rocker grey metallic - 63x63	1789 N-803	1	sztuka
2CKA001751A3148	Rocker None for Switch/push button, Single rocker ivory white - 63x63	1789 N-82	1	sztuka
2CKA001751A3149	Rocker for Switch/push button, Single rocker aluminium silver - 63x63	1789 N-83	1	sztuka
2CKA001751A3151	Mechanical Controls for Switch/push button, Single rocker studio white - 63x63	1789 N-84-500	1	sztuka

2CKA001751A3152	Rocker None for Switch/push button, Single rocker stainless steel - Pure Stainless Steel	1789 N-866	1	sztuka
2CKA001751A3153	Rocker None for Switch/push button, Single rocker studio white matt - 63x63	1789 N-884	1	sztuka
2CKA001751A3154	Rocker None for Switch/push button, Single rocker black matt - 63x63	1789 N-885	1	sztuka
2CKA001751A3156	Rocker for Switch/push button, Single rocker grey metallic - 63x63	1789 ST-803	1	sztuka
2CKA001751A3158	Rocker with legend Symbol "plug" for Switch/push button, Single rocker ivory white - 63x63	1789 ST-82	1	sztuka
2CKA001751A3159	Rocker with legend Symbol "plug" for Switch/push button, Single rocker aluminium silver - 63x63	1789 ST-83	1	sztuka
2CKA001751A3161	Mechanical Controls Various symbols for Switch/push button, Single rocker studio white - 63x63	1789 ST-84-500	1	sztuka
2CKA001751A3162	Rocker with legend Symbol "plug" for Switch/push button, Single rocker stainless steel - Pure Stainless Steel	1789 ST-866	1	sztuka
2CKA001751A3163	Rocker with legend Symbol "plug" for Switch/push button, Single rocker studio white matt - 63x63	1789 ST-884	1	sztuka
2CKA001751A3164	Rocker with legend Symbol "plug" for Switch/push button, Single rocker black matt - 63x63	1789 ST-885	1	sztuka
2CKA001751A3016	Rocker with legend Symbol "key" for Switch/push button, Single rocker grey metallic - 63x63	1789 TR-803	1	sztuka
2CKA001751A2747	Rocker with legend Symbol "key" for Switch/push button, Single rocker ivory white - 63x63	1789 TR-82	1	sztuka
2CKA001751A2953	Rocker with legend Symbol "key" for Switch/push button, Single rocker aluminium silver - 63x63	1789 TR-83	1	sztuka
2CKA001751A2755	Rocker with legend Symbol "key" for Switch/push button, Single rocker studio white - 63x63	1789 TR-84	1	sztuka
2CKA001751A2960	Rocker with legend Symbol "key" for Switch/push button, Single rocker stainless steel - Pure Stainless Steel	1789 TR-866	1	sztuka
2CKA001751A3032	Rocker with legend Symbol "key" for Switch/push button, Single rocker studio white matt - 63x63	1789 TR-884	1	sztuka
2CKA001751A3046	Rocker with legend Symbol "key" for Switch/push button, Single rocker black matt - 63x63	1789 TR-885	1	sztuka
2CKA001751A3013	Rocker for Switch/push button, Single rocker grey metallic - 63x63	1789-803	1	sztuka
2CKA001751A2813	Rocker for Switch/push button, Single rocker ivory white - 63x63	1789-82	1	sztuka
2CKA001751A2945	Rocker None for Switch/push button, Single rocker aluminium silver - 63x63	1789-83	1	sztuka
2CKA001751A3091	Mechanical Controls Without imprint for Switch/push button, Single rocker studio white - 63x63	1789-84-500	1	sztuka
2CKA001751A2957	Rocker for Switch/push button, Single rocker stainless steel - Pure Stainless Steel	1789-866	1	sztuka
2CKA001751A3033	Rocker for Switch/push button, Single rocker studio white matt - 63x63	1789-884	1	sztuka
2CKA001751A3047	Rocker for Switch/push button, Single rocker black matt - 63x63	1789-885	1	sztuka
2CKA001710A4111	Cover plate studio white - 63x63	1790-590-84	1	sztuka
2CKA001710A4112	Cover plate studio white - 63x63	1790-591-84	1	sztuka

2CKA001710A4113	Cover plate studio white - 63x63	1790-592-84	1	sztuka
2CKA001710A4114	Cover plate studio white - 63x63	1790-593-84	1	sztuka
2CKA001710A4115	Cover plate studio white - 63x63	1790-594-84	1	sztuka
2CKA001710A4116	Cover plate studio white - 63x63	1790-595-84	1	sztuka
2CKA001710A4124	Cover plate with legend Card, Symbol "arrows" for Switch/push button, Hotel card grey metallic - 63x63	1792-803	1	sztuka
2CKA001710A3640	Cover plate with legend Card, Symbol "arrows" Hotel card ivory white - 63x63	1792-82	1	sztuka
2CKA001710A3670	Cover plate with legend Card, Symbol "arrows" Hotel card aluminium silver - 63x63	1792-83	1	sztuka
2CKA001710A3757	Cover plate with legend Card, Symbol "arrows" Hotel card stainless steel - Pure Stainless Steel	1792-866	1	sztuka
2CKA001710A3928	Cover plate with legend Card, Symbol "arrows" Hotel card studio white matt - 63x63	1792-884	1	sztuka
2CKA001710A3905	Cover plate with legend Card, Symbol "arrows" Hotel card black matt - 63x63	1792-885	1	sztuka
2CKA001710A3849	Cover plate with legend Characters 1 ... 6 for Thermostat Turn button grey metallic - 63x63	1794 TA-803	1	sztuka
2CKA001710A3696	Cover plate with legend Characters 1 ... 6 for Thermostat Turn button ivory white - 63x63	1794 TA-82	1	sztuka
2CKA001710A3697	Cover plate with legend Characters 1 ... 6 for Thermostat Turn button aluminium silver - 63x63	1794 TA-83	1	sztuka
2CKA001710A3698	Cover plate with legend Characters 1 ... 6 for Thermostat Turn button studio white - 63x63	1794 TA-84	1	sztuka
2CKA001710A3761	Cover plate with legend Symbol "1" for Thermostat Turn button stainless steel - Pure Stainless Steel	1794 TA-866	1	sztuka
2CKA001710A3883	Cover plate with legend Characters 1 ... 6 for Thermostat Turn button studio white matt - 63x63	1794 TA-884	1	sztuka
2CKA001710A3906	Cover plate with legend Characters 1 ... 6 for Thermostat Turn button black matt - 63x63	1794 TA-885	1	sztuka
2CKA001710A3847	Cover plate with legend Symbol "1" for Thermostat Turn button grey metallic - 63x63	1794-803	1	sztuka
2CKA001710A3668	Cover plate with legend Characters 1 ... 6 for Thermostat Turn button aluminium silver - 63x63	1794-83	1	sztuka
2CKA001710A3884	Cover plate Various symbols for Thermostat Turn button studio white matt - 63x63	1794-884	1	sztuka
2CKA001710A3907	Cover plate Various symbols for Thermostat Turn button black matt - 63x63	1794-885	1	sztuka
2CKA001710A4012	Cover plate with legend Symbol "1" for Thermostat Turn button grey metallic - 63x63	1795 HK-803	1	sztuka
2CKA001710A4015	Cover plate with legend Characters 1 ... 6 for Thermostat Turn button ivory white - 63x63	1795 HK-82	1	sztuka
2CKA001710A4017	Cover plate Various symbols for Thermostat Turn button studio white - 63x63	1795 HK-84	1	sztuka
2CKA001710A4018	Cover plate with legend Characters 1 ... 6 for Thermostat Turn button stainless steel - Pure Stainless Steel	1795 HK-866	1	sztuka
2CKA001710A4044	Cover plate with legend Characters 1 ... 6 for Thermostat Turn button 1 sliding switch grey metallic - 63x63	1795 HKEA-803	1	sztuka

2CKA001710A4047	Cover plate with legend Characters 1 ... 6 for Thermostat Turn button 1 sliding switch ivory white - 63x63	1795 HKEA-82	1	sztuka
2CKA001710A4048	Cover plate with legend Characters 1 ... 6 for Thermostat Turn button 1 sliding switch aluminium silver - 63x63	1795 HKEA-83	1	sztuka
2CKA001710A4049	Cover plate with legend Characters 1 ... 6 for Thermostat Turn button 1 sliding switch studio white - 63x63	1795 HKEA-84	1	sztuka
2CKA001710A4050	Cover plate with legend Characters 1 ... 6 for Thermostat Turn button 1 sliding switch stainless steel - Pure Stainless Steel	1795 HKEA-866	1	sztuka
2CKA001710A4051	Cover plate with legend Characters 1 ... 6 for Thermostat Turn button 1 sliding switch studio white matt - 63x63	1795 HKEA-884	1	sztuka
2CKA001710A4052	Cover plate with legend Characters 1 ... 6 for Thermostat Turn button 1 sliding switch black matt - 63x63	1795 HKEA-885	1	sztuka
2CKA001710A3850	Cover plate with legend Characters 1 ... 6 for Thermostat Turn button 1 sliding switch grey metallic - 63x63	1795 TA-803	1	sztuka
2CKA001710A3723	Cover plate with legend Characters 1 ... 6 for Thermostat Turn button 1 sliding switch ivory white - 63x63	1795 TA-82	1	sztuka
2CKA001710A3724	Cover plate with legend Characters 1 ... 6 for Thermostat Turn button 1 sliding switch aluminium silver - 63x63	1795 TA-83	1	sztuka
2CKA001710A3725	Cover plate with legend Characters 1 ... 6 for Thermostat Turn button 1 sliding switch studio white - 63x63	1795 TA-84	1	sztuka
2CKA001710A3762	Cover plate with legend Symbol "1" for Thermostat Turn button 1 sliding switch stainless steel - Pure Stainless Steel	1795 TA-866	1	sztuka
2CKA001710A3885	Cover plate with legend Characters 1 ... 6 for Thermostat Turn button 1 sliding switch studio white matt - 63x63	1795 TA-884	1	sztuka
2CKA001710A3908	Cover plate with legend Characters 1 ... 6 for Thermostat Turn button 1 sliding switch black matt - 63x63	1795 TA-885	1	sztuka
2CKA001710A3848	Cover plate with legend Characters 1 ... 6 for Thermostat Turn button 1 sliding switch grey metallic - 63x63	1795-803	1	sztuka
2CKA001710A3568	Cover plate with legend Characters 1 ... 6 for Thermostat Turn button 1 sliding switch ivory white - 63x63	1795-82	1	sztuka
2CKA001710A3669	Cover plate with legend Characters 1 ... 6 for Thermostat Turn button 1 sliding switch aluminium silver - 63x63	1795-83	1	sztuka
2CKA001710A3569	Cover plate with legend Characters 1 ... 6 for Thermostat Turn button 1 sliding switch studio white - 63x63	1795-84	1	sztuka
2CKA001710A3756	Cover plate with legend Symbol "1" for Thermostat Turn button 1 sliding switch stainless steel - Pure Stainless Steel	1795-866	1	sztuka
2CKA001710A3886	Cover plate with legend Characters 1 ... 6 for Thermostat Turn button 1 sliding switch studio white matt - 63x63	1795-884	1	sztuka

2CKA001710A3909	Cover plate with legend Characters 1 ... 6 for Thermostat Turn button 1 sliding switch black matt - 63x63	1795-885	1	sztuka
2CKA001753A0307	Cover plate Pull cord grey metallic - 63x63	1796-803	1	sztuka
2CKA001753A0309	Cover plate for Pull-cord switch, Pull cord ivory white - 63x63	1796-82	1	sztuka
2CKA001753A0310	Cover plate for Pull-cord switch, Pull cord aluminium silver - 63x63	1796-83	1	sztuka
2CKA001753A0311	Cover plate for Pull-cord switch, Pull cord studio white - 63x63	1796-84	1	sztuka
2CKA001753A0312	Cover plate for Pull-cord switch, Pull cord stainless steel - Pure Stainless Steel	1796-866	1	sztuka
2CKA001753A0313	Cover plate for Pull-cord switch, Pull cord studio white matt - 63x63	1796-884	1	sztuka
2CKA001753A0314	Cover plate with legend Symbol "bell" for Switch/push button, Pull cord black matt - 63x63	1796-885	1	sztuka
2CKA001710A3856	Cover plate with labelling field Modular Jack 2 gang grey metallic - 63x63	1800-803	1	sztuka
2CKA001710A3158	Cover plate with labelling field Modular Jack 2 gang ivory white - 63x63	1800-82	1	sztuka
2CKA001710A3676	Cover plate with labelling field Modular Jack 2 gang aluminium silver - 63x63	1800-83	1	sztuka
2CKA001710A3990	Data / Telecommunication / Antenna Modular Jack 2 gang studio white - 63x63	1800-84-500	1	sztuka
2CKA001710A3767	Cover plate with labelling field Modular Jack 2 gang stainless steel - Pure Stainless Steel	1800-866	1	sztuka
2CKA001710A3887	Cover plate with labelling field Modular Jack 2 gang studio white matt - 63x63	1800-884	1	sztuka
2CKA001710A3910	Cover plate with labelling field Modular Jack 2 gang black matt - 63x63	1800-885	1	sztuka
2CKA001710A3853	Cover plate with labelling field UAE/IAE (ISDN) 2 gang grey metallic - 63x63	1803-02-803	1	sztuka
2CKA001710A3146	Cover plate with labelling field UAE/IAE (ISDN) 2 gang ivory white - 63x63	1803-02-82	1	sztuka
2CKA001710A3610	Cover plate with labelling field UAE/IAE (ISDN) 2 gang aluminium silver - 63x63	1803-02-83	1	sztuka
2CKA001710A1551	Data / Telecommunication / Antenna UAE/IAE (ISDN) 2 gang studio white - 63x63	1803-02-84- 500	1	sztuka
2CKA001710A3764	Cover plate with labelling field UAE/IAE (ISDN) 2 gang stainless steel - Pure Stainless Steel	1803-02-866	1	sztuka
2CKA001710A3888	Cover plate with labelling field UAE/IAE (ISDN) 2 gang studio white matt - 63x63	1803-02-884	1	sztuka
2CKA001710A3911	Cover plate with labelling field UAE/IAE (ISDN) 2 gang black matt - 63x63	1803-02-885	1	sztuka
2CKA001710A3852	Cover plate with labelling field UAE/IAE (ISDN) 1 gang grey metallic - 63x63	1803-803	1	sztuka
2CKA001710A3147	Cover plate with labelling field UAE/IAE (ISDN) 1 gang ivory white - 63x63	1803-82	1	sztuka
2CKA001710A3674	Cover plate with labelling field UAE/IAE (ISDN) 1 gang aluminium silver - 63x63	1803-83	1	sztuka
2CKA001710A1550	Data / Telecommunication / Antenna UAE/IAE (ISDN) 1 gang studio white - 63x63	1803-84-500	1	sztuka
2CKA001710A3763	Cover plate with labelling field UAE/IAE (ISDN) 1 gang stainless steel - Pure Stainless Steel	1803-866	1	sztuka

2CKA001710A3889	Cover plate with labelling field UAE/IAE (ISDN) 1 gang studio white matt - 63x63	1803-884	1	sztuka
2CKA001710A3912	Cover plate with labelling field UAE/IAE (ISDN) 1 gang black matt - 63x63	1803-885	1	sztuka
2CKA002013A5405	Busch-Object socket outlet SCHUKO® socket insert Without imprint Safety Shutter ivory white - 63x63	20 EUAB-82	1	sztuka
2CKA002013A5406	Busch-Object socket outlet SCHUKO® socket insert Without imprint Safety Shutter aluminium silver - 63x63	20 EUAB-83	1	sztuka
2CKA002013A5407	Busch-Object socket outlet SCHUKO® socket insert Without imprint Safety Shutter studio white - 63x63	20 EUAB-84	1	sztuka
2CKA002013A5408	Busch-Object socket outlet SCHUKO® socket insert Without imprint Safety Shutter stainless steel - Pure Stainless Steel	20 EUAB-866	1	sztuka
2CKA002013A5409	Busch-Object socket outlet SCHUKO® socket insert Without imprint Safety Shutter studio white matt - 63x63	20 EUAB-884	1	sztuka
2CKA002013A5410	Busch-Object socket outlet SCHUKO® socket insert Without imprint Safety Shutter black matt - 63x63	20 EUAB-885	1	sztuka
2CKA002011A6260	SCHUKO® Socket insert with legend SV green - 63x63	20 EUC-13-82-101	1	sztuka
2CKA002011A3723	SCHUKO® Socket insert with legend ZSV orange - 63x63	20 EUC-14-82	1	sztuka
2CKA002011A6216	Socket Outlets Without imprint grey metallic - 63x63	20 EUC-803-500	1	sztuka
2CKA002011A6214	Socket Outlets Without imprint ivory white - 63x63	20 EUC-82-500	1	sztuka
2CKA002011A6213	Socket Outlets Without imprint aluminium silver - 63x63	20 EUC-83-500	1	sztuka
2CKA002011A6207	Socket Outlets Without imprint studio white - 63x63	20 EUC-84-500	1	sztuka
2CKA002011A6212	Socket Outlets Without imprint stainless steel - Pure Stainless Steel	20 EUC-866-500	1	sztuka
2CKA002011A6208	Socket Outlets Without imprint studio white matt - 63x63	20 EUC-884-500	1	sztuka
2CKA002011A6211	Socket Outlets Without imprint black matt - 63x63	20 EUC-885-500	1	sztuka
2CKA002013A5472	SCHUKO® Socket insert with legend SV Safety Shutter green - 63x63	20 EUCB-13-82-102	1	sztuka
2CKA002013A5413	SCHUKO® Socket insert with legend ZSV Safety Shutter orange - 63x63	20 EUCB-14-82-10	1	sztuka
2CKA002013A5414	Busch-Service-Socket SCHUKO® socket insert Without imprint Safety Shutter grey metallic - 63x63	20 EUCBDR-803	1	sztuka
2CKA002013A5416	Busch-Service-Socket SCHUKO® socket insert Without imprint Safety Shutter ivory white - 63x63	20 EUCBDR-82	1	sztuka
2CKA002013A5417	Busch-Service-Socket SCHUKO® socket insert Without imprint Safety Shutter aluminium silver - 63x63	20 EUCBDR-83	1	sztuka
2CKA002013A5418	Busch-Service-Socket SCHUKO® socket insert Without imprint Safety Shutter studio white - 63x63	20 EUCBDR-84	1	sztuka

2CKA002013A5419	Busch-Service-Socket SCHUKO® socket insert Without imprint Safety Shutter stainless steel - Pure Stainless Steel	20 EUCBDR- 866	1	sztuka
2CKA002013A5420	Busch-Service-Socket SCHUKO® socket insert Without imprint Safety Shutter studio white matt - 63x63	20 EUCBDR- 884	1	sztuka
2CKA002013A5421	Busch-Service-Socket SCHUKO® socket insert Without imprint Safety Shutter black matt - 63x63	20 EUCBDR- 885	1	sztuka
2CKA002013A5467	SCHUKO® socket insert Without imprint Safety Shutter withControl light; LED /Green green - 63x63	20 EUCBL-13- 84-101	1	sztuka
2CKA002013A5288	SCHUKO® socket insert Without imprint Safety Shutter withControl light; LED /Green orange - 63x63	20 EUCBL-14- 84	1	sztuka
2CKA002013A5456	SCHUKO® socket insert Without imprint Safety Shutter withControl light; LED /Green grey metallic - 63x63	20 EUCBL-803	1	sztuka
2CKA002013A5284	SCHUKO® socket insert Without imprint Safety Shutter withControl light; LED /Green ivory white - 63x63	20 EUCBL-82	1	sztuka
2CKA002013A5285	SCHUKO® socket insert Without imprint Safety Shutter withControl light; LED /Green aluminium silver - 63x63	20 EUCBL-83	1	sztuka
2CKA002013A5286	SCHUKO® socket insert Without imprint Safety Shutter withControl light; LED /Green studio white - 63x63	20 EUCBL-84	1	sztuka
2CKA002013A5289	SCHUKO® socket insert Without imprint Safety Shutter withControl light; LED /Green stainless steel - Pure Stainless Steel	20 EUCBL-866	1	sztuka
2CKA002013A5336	SCHUKO® socket insert Without imprint Safety Shutter withControl light; LED /Green studio white matt - 63x63	20 EUCBL-884	1	sztuka
2CKA002013A5330	SCHUKO® socket insert Without imprint Safety Shutter withControl light; LED /Green black matt - 63x63	20 EUCBL-885	1	sztuka
2CKA002013A5458	Busch-steplight SCHUKO® socket insert Without imprint Safety Shutter Protective contact (SCHUKO) withNight light; LED /White grey metallic - 63x63	20 EUCBLI- 803	1	sztuka
2CKA002013A5292	Busch-steplight SCHUKO® socket insert Without imprint Safety Shutter Protective contact (SCHUKO) withNight light; LED /White ivory white - 63x63	20 EUCBLI-82	1	sztuka
2CKA002013A5293	Busch-steplight SCHUKO® socket insert Without imprint Safety Shutter Protective contact (SCHUKO) withNight light; LED /White aluminium silver - 63x63	20 EUCBLI-83	1	sztuka
2CKA002013A5294	Busch-steplight SCHUKO® socket insert Without imprint Safety Shutter Protective contact (SCHUKO) withNight light; LED /White studio white - 63x63	20 EUCBLI-84	1	sztuka
2CKA002013A5460	Busch-steplight SCHUKO® socket insert Without imprint Safety Shutter Protective contact (SCHUKO) withNight light; LED /White stainless steel - Pure Stainless Steel	20 EUCBLI- 866	1	sztuka
2CKA002013A5326	Busch-steplight SCHUKO® socket insert Without imprint Safety Shutter Protective contact (SCHUKO) withNight light; LED /White studio white matt - 63x63	20 EUCBLI- 884	1	sztuka

2CKA002013A5331	Busch-steplight SCHUKO® socket insert Without imprint Safety Shutter Protective contact (SCHUKO) with Night light; LED /White black matt - 63x63	20 EUCBLI-885	1	sztuka
2CKA002013A5463	SCHUKO® socket insert Safety Shutter red - 63x63	20 EUCKSDV-12-82-101	1	sztuka
2CKA002013A5462	SCHUKO® Socket insert with legend EDV Safety Shutter grey metallic - 63x63	20 EUCKSDV-803	1	sztuka
2CKA002013A5267	SCHUKO® Socket insert with legend EDV Safety Shutter ivory white - 63x63	20 EUCKSDV-82	1	sztuka
2CKA002013A5273	SCHUKO® Socket insert with legend EDV Safety Shutter aluminium silver - 63x63	20 EUCKSDV-83	1	sztuka
2CKA002013A5268	SCHUKO® Socket insert with legend EDV Safety Shutter studio white - 63x63	20 EUCKSDV-84	1	sztuka
2CKA002013A5277	SCHUKO® Socket insert with legend EDV Safety Shutter stainless steel - Pure Stainless Steel	20 EUCKSDV-866	1	sztuka
2CKA002013A5327	SCHUKO® Socket insert with legend EDV Safety Shutter studio white matt - 63x63	20 EUCKSDV-884	1	sztuka
2CKA002013A5332	SCHUKO® Socket insert with legend EDV Safety Shutter black matt - 63x63	20 EUCKSDV-885	1	sztuka
2CKA002013A5464	SCHUKO® socket insert Without imprint Safety Shutter red - 63x63	20 EUCKSDV-12-82-101	1	sztuka
2CKA002013A5470	SCHUKO® socket insert Without imprint Safety Shutter green - 63x63	20 EUCKSDV-13-82-101	1	sztuka
2CKA002013A5324	SCHUKO® socket insert Without imprint Safety Shutter orange - 63x63	20 EUCKSDV-14-82	1	sztuka
2CKA002013A5297	SCHUKO® socket insert Without imprint Safety Shutter grey metallic - 63x63	20 EUCKSDV-803	1	sztuka
2CKA002013A5376	Socket Outlets Without imprint Safety Shutter ivory white - 63x63	20 EUCKSDV-82-500	1	sztuka
2CKA002013A5375	Socket Outlets Without imprint Safety Shutter aluminium silver - 63x63	20 EUCKSDV-83-500	1	sztuka
2CKA002013A5372	Socket insert Without imprint Safety Shutter Protective contact (SCHUKO) studio white - 63x63	20 EUCKSDV-84-500	1	sztuka
2CKA002013A5374	Socket Outlets Without imprint Safety Shutter stainless steel - Pure Stainless Steel	20 EUCKSDV-866-500	1	sztuka
2CKA002013A5373	Socket insert Without imprint Safety Shutter Protective contact (SCHUKO) studio white matt - 63x63	20 EUCKSDV-884-500	1	sztuka
2CKA002013A5333	SCHUKO® socket insert Without imprint Safety Shutter Protective contact (SCHUKO) black matt - 63x63	20 EUCKSDV-885	1	sztuka
2CKA002013A5423	SCHUKO® Socket insert with labelling field Without imprint Safety Shutter red - 63x63	20 EUCNB-12-82	1	sztuka
2CKA002013A5424	SCHUKO® Socket insert with labelling field Without imprint Safety Shutter green - 63x63	20 EUCNB-13-82	1	sztuka
2CKA002013A5425	SCHUKO® Socket insert with labelling field Without imprint Safety Shutter orange - 63x63	20 EUCNB-14-82	1	sztuka
2CKA002013A5426	SCHUKO® Socket insert with labelling field Without imprint Safety Shutter grey metallic - 63x63	20 EUCNB-803	1	sztuka
2CKA002013A5428	SCHUKO® Socket insert with labelling field Without imprint Safety Shutter ivory white - 63x63	20 EUCNB-82	1	sztuka

2CKA002013A5429	SCHUKO® Socket insert with labelling field Without imprint Safety Shutter aluminium silver - 20 EUCNB-83 63x63	1	sztuka
2CKA002013A5432	SCHUKO® Socket insert with labelling field Without imprint Safety Shutter stainless steel -20 EUCNB-866 Pure Stainless Steel	1	sztuka
2CKA002013A5433	SCHUKO® Socket insert with labelling field Without imprint Safety Shutter studio white matt -20 EUCNB-884 63x63	1	sztuka
2CKA002013A5434	SCHUKO® Socket insert with labelling field Without imprint Safety Shutter black matt - 63x63	20 EUCNB-885	1 sztuka
2CKA002013A5436	SCHUKO® socket insert Without imprint Safety Shutter Protective contact (SCHUKO) grey metallic - 63x63	20 EUCRB-803	1 sztuka
2CKA002013A5438	SCHUKO® socket insert Without imprint Safety Shutter ivory white - 63x63	20 EUCRB-82	1 sztuka
2CKA002013A5439	SCHUKO® socket insert Without imprint Safety Shutter aluminium silver - 63x63	20 EUCRB-83	1 sztuka
2CKA002013A5441	20 EUCRB-84-500 Socket Outlet	20 EUCRB-84-500	1 sztuka
2CKA002013A5442	SCHUKO® socket insert Without imprint Safety Shutter stainless steel - Pure Stainless Steel	20 EUCRB-866	1 sztuka
2CKA002013A5443	SCHUKO® socket insert Without imprint Safety Shutter studio white matt - 63x63	20 EUCRB-884	1 sztuka
2CKA002013A5444	SCHUKO® socket insert Without imprint Safety Shutter black matt - 63x63	20 EUCRB-885	1 sztuka
2CKA002018A1493	SCHUKO® socket insert Without imprint with Hinged Lid grey metallic - 63x63	20 EUK-803	1 sztuka
2CKA002018A1465	SCHUKO® socket insert Without imprint with Hinged Lid ivory white - 63x63	20 EUK-82	1 sztuka
2CKA002018A1487	SCHUKO® socket insert Without imprint with Hinged Lid aluminium silver - 63x63	20 EUK-83	1 sztuka
2CKA002018A1509	Socket Outlets Without imprint with Hinged Lid studio white - 63x63	20 EUK-84-500	1 sztuka
2CKA002018A1490	SCHUKO® socket insert Without imprint with Hinged Lid stainless steel - Pure Stainless Steel	20 EUK-866	1 sztuka
2CKA002018A1494	SCHUKO® socket insert Without imprint with Hinged Lid studio white matt - 63x63	20 EUK-884	1 sztuka
2CKA002018A1495	SCHUKO® socket insert Without imprint with Hinged Lid black matt - 63x63	20 EUK-885	1 sztuka
2CKA002018A1516	SCHUKO® socket insert Without imprint Safety Shutter with Hinged Lid grey metallic - 63x63	20 EUKB-803	1 sztuka
2CKA002018A1518	SCHUKO® socket insert Without imprint Safety Shutter with Hinged Lid ivory white - 63x63	20 EUKB-82	1 sztuka
2CKA002018A1519	SCHUKO® socket insert Without imprint Safety Shutter with Hinged Lid aluminium silver - 63x63	20 EUKB-83	1 sztuka
2CKA002018A1520	SCHUKO® socket insert Without imprint Safety Shutter with Hinged Lid studio white - 63x63	20 EUKB-84	1 sztuka
2CKA002018A1521	SCHUKO® socket insert Without imprint Safety Shutter with Hinged Lid stainless steel - Pure Stainless Steel	20 EUKB-866	1 sztuka
2CKA002018A1522	SCHUKO® socket insert Without imprint Safety Shutter with Hinged Lid studio white matt - 63x63	20 EUKB-884	1 sztuka
2CKA002018A1523	SCHUKO® socket insert Without imprint Safety Shutter with Hinged Lid black matt - 63x63	20 EUKB-885	1 sztuka

2CKA002018A1525	SCHUKO® socket insert Without imprint Safety Shutter with Hinged Lid grey metallic - 63x63	20 EUKBR-803	1	sztuka
2CKA002018A1527	SCHUKO® socket insert Without imprint Safety Shutter with Hinged Lid ivory white - 63x63	20 EUKBR-82	1	sztuka
2CKA002018A1528	SCHUKO® socket insert Without imprint Safety Shutter with Hinged Lid aluminium silver - 63x63	20 EUKBR-83	1	sztuka
2CKA002018A1529	SCHUKO® socket insert Without imprint Safety Shutter with Hinged Lid studio white - 63x63	20 EUKBR-84	1	sztuka
2CKA002018A1530	SCHUKO® socket insert Without imprint Safety Shutter with Hinged Lid studio white matt - 63x63	20 EUKBR-884	1	sztuka
2CKA002018A1531	SCHUKO® socket insert Without imprint Safety Shutter with Hinged Lid black matt - 63x63	20 EUKBR-885	1	sztuka
2CKA002018A1533	SCHUKO® Socket insert with labelling field Without imprint Safety Shutter with Hinged Lid red - 63x63	20 EUKNB-12-82	1	sztuka
2CKA002018A1534	SCHUKO® Socket insert with labelling field Without imprint Safety Shutter with Hinged Lid green - 63x63	20 EUKNB-13-82	1	sztuka
2CKA002018A1535	SCHUKO® Socket insert with labelling field Without imprint Safety Shutter with Hinged Lid orange - 63x63	20 EUKNB-14-82	1	sztuka
2CKA002018A1536	SCHUKO® socket insert Without imprint Safety Shutter with Hinged Lid grey metallic - 63x63	20 EUKNB-803	1	sztuka
2CKA002018A1538	SCHUKO® Socket insert with labelling field Without imprint Safety Shutter with Hinged Lid ivory white - 63x63	20 EUKNB-82	1	sztuka
2CKA002018A1539	SCHUKO® Socket insert with labelling field Without imprint Safety Shutter with Hinged Lid aluminium silver - 63x63	20 EUKNB-83	1	sztuka
2CKA002018A1540	SCHUKO® Socket insert with labelling field Without imprint Safety Shutter with Hinged Lid studio white - 63x63	20 EUKNB-84	1	sztuka
2CKA002018A1541	SCHUKO® Socket insert with labelling field Without imprint Safety Shutter with Hinged Lid studio white matt - 63x63	20 EUKNB-884	1	sztuka
2CKA002018A1542	SCHUKO® Socket insert with labelling field Without imprint Safety Shutter with Hinged Lid black matt - 63x63	20 EUKNB-885	1	sztuka
2CKA002018A1544	SCHUKO® Socket insert with labelling field Without imprint Safety Shutter with Hinged Lid red - 63x63	20 EUKNBL-12-82	1	sztuka
2CKA002018A1545	SCHUKO® Socket insert with labelling field Without imprint Safety Shutter with Hinged Lid green - 63x63	20 EUKNBL-13-82	1	sztuka
2CKA002018A1546	SCHUKO® Socket insert with labelling field Without imprint Safety Shutter with Hinged Lid orange - 63x63	20 EUKNBL-14-82	1	sztuka
2CKA002018A1547	SCHUKO® socket insert Without imprint Safety Shutter with Hinged Lid grey metallic - 63x63	20 EUKNBL-803	1	sztuka
2CKA002018A1551	SCHUKO® Socket insert with labelling field Without imprint Safety Shutter with Hinged Lid studio white - 63x63	20 EUKNBL-84	1	sztuka
2CKA002018A1552	SCHUKO® Socket insert with labelling field Without imprint Safety Shutter with Hinged Lid studio white matt - 63x63	20 EUKNBL-884	1	sztuka

2CKA002018A1553	SCHUKO® Socket insert with labelling field Without imprint Safety Shutter with Hinged Lid black matt - 63x63	20 EUKNBL- 885	1	sztuka
2CKA002018A1559	SCHUKO® Socket insert with labelling field Without imprint Safety Shutter with Hinged Lid and Cylinder Lock with different locking ivory white - 63x63	20 EUKNBSL- 82	1	sztuka
2CKA002018A1560	SCHUKO® Socket insert with labelling field Without imprint Safety Shutter with Hinged Lid and Cylinder Lock with simultaneous locking ivory white - 63x63	20 EUKNBSL- 82-101	1	sztuka
2CKA002018A1561	SCHUKO® Socket insert with labelling field Without imprint Safety Shutter with Hinged Lid and Cylinder Lock with different locking aluminium silver - 63x63	20 EUKNBSL- 83	1	sztuka
2CKA002018A1562	SCHUKO® Socket insert with labelling field Without imprint Safety Shutter with Hinged Lid and Cylinder Lock with simultaneous locking aluminium silver - 63x63	20 EUKNBSL- 83-101	1	sztuka
2CKA002018A1563	SCHUKO® Socket insert with labelling field Without imprint Safety Shutter with Hinged Lid and Cylinder Lock with different locking studio white - 63x63	20 EUKNBSL- 84	1	sztuka
2CKA002018A1564	SCHUKO® Socket insert with labelling field Without imprint Safety Shutter with Hinged Lid and Cylinder Lock with simultaneous locking studio white - 63x63	20 EUKNBSL- 84-101	1	sztuka
2CKA002018A1565	SCHUKO® Socket insert with labelling field Without imprint Safety Shutter with Hinged Lid and Cylinder Lock with different locking studio white matt - 63x63	20 EUKNBSL- 884	1	sztuka
2CKA002018A1566	SCHUKO® Socket insert with labelling field Without imprint Safety Shutter with Hinged Lid and Cylinder Lock with simultaneous locking studio white matt - 63x63	20 EUKNBSL- 884-101	1	sztuka
2CKA002018A1567	SCHUKO® Socket insert with labelling field Without imprint Safety Shutter with Hinged Lid and Cylinder Lock with different locking black matt - 63x63	20 EUKNBSL- 885	1	sztuka
2CKA002018A1568	SCHUKO® Socket insert with labelling field Without imprint Safety Shutter with Hinged Lid and Cylinder Lock with simultaneous locking black matt - 63x63	20 EUKNBSL- 885-101	1	sztuka
2CKA002011A3876	SCHUKO® Socket insert with labelling field Without imprint grey metallic - 63x63	20 EUN-803	1	sztuka
2CKA002011A3726	SCHUKO® Socket insert with labelling field Without imprint ivory white - 63x63	20 EUN-82	1	sztuka
2CKA002011A3810	SCHUKO® Socket insert with labelling field Without imprint aluminium silver - 63x63	20 EUN-83	1	sztuka
2CKA002011A6209	Socket Outlets Without imprint studio white - 63x63	20 EUN-84- 500	1	sztuka
2CKA002011A3851	SCHUKO® Socket insert with labelling field Without imprint stainless steel - Pure Stainless Steel	20 EUN-866	1	sztuka
2CKA002011A3881	SCHUKO® Socket insert with labelling field Without imprint studio white matt - 63x63	20 EUN-884	1	sztuka
2CKA002011A3884	SCHUKO® Socket insert with labelling field Without imprint black matt - 63x63	20 EUN-885	1	sztuka

2CKA001012A2159	Fan switch - 63x63	2000/6 UJ/01	1	sztuka
2CKA001012A2200	Fan switch - 63x63	2000/6 UJ/02	1	sztuka
2CKA001012A2201	Fan switch - 63x63	2000/6 UJ/03	1	sztuka
2CKA001012A2203	Fan switch - 63x63	2000/6 UJ/04	1	sztuka
2CKA001012A2205	Fan switch - 63x63	2000/6 UJ/05	1	sztuka
2CKA001012A2208	Fan switch - 63x63	2000/6 UJ/09	1	sztuka
2CKA001751A3170	Bell push-switch DND / MUR insert DND, MUR and Symbol "bell" Single push button 1 pole, with LED 1NO studio white - 63x63	2029 UC-84	1	sztuka
2CKA001751A3171	Bell push-switch DND / MUR insert DND, MUR and Symbol "bell" Single push button 1 pole, 1NO stainless steel - Pure Stainless Steel	2029 UC-866	1	sztuka
2CKA001751A3173	Bell push-switch DND / MUR insert DND, MUR and Symbol "bell" Single push button 1 pole, 1NO black matt - 63x63	2029 UC-885	1	sztuka
2CKA001510A0005	Cover Busch-iceLight Reflector Ambient / orientation lightning / White studio white - 63x63	2068/11-84	1	sztuka
2CKA001510A0008	Cover Busch-iceLight Reflector Ambient / orientation lightning, Infolight studio white - 63x63	2068/14-84	1	sztuka
2CKA001510A0017	Cover Busch-iceLight Ambient lightning studio white - 63x63	2068/22-84	1	sztuka
2CKA001510A0015	Busch-iceLight set with Night light; LED studio white - future linear	2069/11-84	1	sztuka
2CKA002495A0085	Equipotential socket insert Socket outlet 2-position ivory white - 63x63	2095 UC-82	1	sztuka
2CKA002495A0089	Equipotential socket insert Socket outlet 2-position aluminium silver - 63x63	2095 UC-83	1	sztuka
2CKA002495A0086	Equipotential socket insert Socket outlet 2-position studio white - 63x63	2095 UC-84	1	sztuka
2CKA002495A0090	Equipotential socket insert Socket outlet 2-position stainless steel - Pure Stainless Steel	2095 UC-866	1	sztuka
2CKA002495A0091	Equipotential socket insert Socket outlet 2-position studio white matt - 63x63	2095 UC-884	1	sztuka
2CKA002495A0092	Equipotential socket insert Socket outlet 2-position black matt - 63x63	2095 UC-885	1	sztuka
2CKA002190A0224	Socket Outlets Without imprint British Standard grey metallic - Busch-axcent	2190 EUC-803	1	sztuka
2CKA002190A0213	Socket Outlets Without imprint British Standard ivory - carat	2190 EUC-82	1	sztuka
2CKA002190A0214	Socket Outlets Without imprint British Standard aluminium silver - 63x63	2190 EUC-83	1	sztuka
2CKA002190A0215	2190 EUC-84 Socket Outl. S/F 1g	2190 EUC-84	1	sztuka
2CKA002190A0217	Socket Outlets Without imprint British Standard stainless steel - Pure Stainless Steel	2190 EUC-866	1	sztuka
2CKA002190A0218	Socket Outlets Without imprint British Standard studio white matt - 63x63	2190 EUC-884	1	sztuka
2CKA002013A5475	SCHUKO® socket insert Without imprint Safety Shutter ivory white - 63x63	23 EUCB-82	1	sztuka
2CKA002013A5476	SCHUKO® socket insert Without imprint Safety Shutter aluminium silver - 63x63	23 EUCB-83	1	sztuka
2CKA002013A5477	SCHUKO® socket insert Without imprint Safety Shutter studio white - 63x63	23 EUCB-84	1	sztuka

2CKA002013A5478	SCHUKO® socket insert Without imprint Safety Shutter stainless steel - Pure Stainless Steel	23 EUCB-866	1	sztuka
2CKA002013A5479	SCHUKO® socket insert Without imprint Safety Shutter studio white matt - 63x63	23 EUCB-884	1	sztuka
2CKA002013A5480	SCHUKO® socket insert Without imprint Safety Shutter black matt - 63x63	23 EUCB-885	1	sztuka
2CKA002013A5447	SCHUKO® socket insert Without imprint Safety Shutter grey metallic - 63x63	2300 EUCB-803	1	sztuka
2CKA002013A5449	SCHUKO® socket insert Without imprint Safety Shutter ivory white - 63x63	2300 EUCB-82	1	sztuka
2CKA002013A5450	SCHUKO® socket insert Without imprint Safety Shutter aluminium silver - 63x63	2300 EUCB-83	1	sztuka
2CKA002013A5451	SCHUKO® socket insert Without imprint Safety Shutter studio white - 63x63	2300 EUCB-84	1	sztuka
2CKA002013A5452	SCHUKO® socket insert Without imprint Safety Shutter stainless steel - Pure Stainless Steel	2300 EUCB-866	1	sztuka
2CKA002013A5453	SCHUKO® socket insert Without imprint Safety Shutter studio white matt - 63x63	2300 EUCB-884	1	sztuka
2CKA002013A5454	SCHUKO® socket insert Without imprint Safety Shutter black matt - 63x63	2300 EUCB-885	1	sztuka
2CKA002113A0510	Socket Outlets Without imprint Safety Shutter ivory white - 63x63	2300 UCRKS-82-503	1	sztuka
2CKA002113A0511	2300 UCRKS-84-503 Socket Outl. S	2300 UCRKS-84-503	1	sztuka
2CKA002113A5337	Socket Outlets Without imprint Safety Shutter studio white matt - 63x63	2300 UCRKS-884-503	1	sztuka
2CKA002113A5340	Socket Outlets Without imprint Safety Shutter black matt - 63x63	2300 UCRKS-885-503	1	sztuka
2CKA002011A6257	Busch-Protector® SCHUKO® socket insert Without imprint red - 63x63	2310 EUGL/VA-12-82-101	1	sztuka
2CKA002011A3831	Busch-Protector® SCHUKO® socket insert Without imprint ivory white - 63x63	2310 EUGL/VA-82-11	1	sztuka
2CKA002011A3832	Busch-Protector® SCHUKO® socket insert Without imprint aluminium silver - 63x63	2310 EUGL/VA-83-11	1	sztuka
2CKA002011A3833	Busch-Protector® SCHUKO® socket insert Without imprint studio white - 63x63	2310 EUGL/VA-84-11	1	sztuka
2CKA002011A3877	Busch-Protector® SCHUKO® socket insert Without imprint grey metallic - 63x63	2310 EUGL/VA-803-11	1	sztuka
2CKA002011A3853	Busch-Protector® SCHUKO® socket insert Without imprint stainless steel - Pure Stainless Steel	2310 EUGL/VA-866-11	1	sztuka
2CKA002011A3882	Busch-Protector® SCHUKO® socket insert Without imprint studio white matt - 63x63	2310 EUGL/VA-884-11	1	sztuka
2CKA002011A3885	Busch-Protector® SCHUKO® socket insert Without imprint black matt - 63x63	2310 EUGL/VA-885-11	1	sztuka
2CKA002099A0197	2397 UCKS-82-505 Center PI, SF for 2300	2397 UCKS-82-505	1	sztuka
2CKA002099A0198	2397 UCKS-84-505 Center PI, SF for 2300	2397 UCKS-84-505	1	sztuka
2CKA002099A0253	Socket Outlets Without imprint Safety Shutter grey metallic - 63x63	2399 UCKS-803	1	sztuka
2CKA002099A0211	Socket Outlets Without imprint Safety Shutter ivory white - 63x63	2399 UCKS-82	1	sztuka

2CKA002099A0191	Socket Outlets Without imprint Safety Shutter ivory white - 63x63	2399 UCKS-82 -505	1	sztuka
2CKA002099A0241	Socket Outlets Without imprint Safety Shutter aluminium silver - 63x63	2399 UCKS-83	1	sztuka
2CKA002099A0214	Socket insert Without imprint Safety Shutter Earthing pin studio white - 63x63	2399 UCKS-84	1	sztuka
2CKA002099A0192	2399 UCKS-84-505 Center PI, SF for 23M	2399 UCKS-84 -505	1	sztuka
2CKA002099A0243	Socket Without imprint Safety Shutter stainless steel - Pure Stainless Steel	2399 UCKS- 866	1	sztuka
2CKA002099A0255	Socket Outlets Without imprint Safety Shutter studio white matt - 63x63	2399 UCKS- 884	1	sztuka
2CKA001751A3175	Rocker with legend Symbol "bell" for Switch/push button, Single rocker grey metallic - 63x63	2520 KI-803	1	sztuka
2CKA001751A3177	Rocker with legend Symbol "bell" for Switch/push button, Single rocker ivory white - 63x63	2520 KI-82	1	sztuka
2CKA001751A3178	Rocker with legend Symbol "bell" for Switch/push button, Single rocker aluminium silver - 63x63	2520 KI-83	1	sztuka
2CKA001751A3180	Electronic Controls Symbol "bell" for Switch/push button Single rocker studio white - 63x63	2520 KI-84-500	1	sztuka
2CKA001751A3181	Rocker with legend Symbol "bell" for Switch/push button, Single rocker stainless steel - Pure Stainless Steel	2520 KI-866	1	sztuka
2CKA001751A3182	Rocker with legend Symbol "bell" for Switch/push button, Single rocker studio white matt - 63x63	2520 KI-884	1	sztuka
2CKA001751A3183	Rocker with legend Symbol "bell" for Switch/push button, Single rocker black matt - 63x63	2520 KI-885	1	sztuka
2CKA001751A3185	Rocker for Switch/push button, Single rocker grey metallic - 63x63	2520 LI-803	1	sztuka
2CKA001751A3187	Rocker with legend Symbol "light" for Switch/push button, Single rocker ivory white - 63x63	2520 LI-82	1	sztuka
2CKA001751A3188	Rocker with legend Symbol "light" for Switch/push button, Single rocker aluminium silver - 63x63	2520 LI-83	1	sztuka
2CKA001751A3191	Rocker with legend Symbol "light" for Switch/push button, Single rocker stainless steel - Pure Stainless Steel	2520 LI-866	1	sztuka
2CKA001751A3192	Rocker with legend Symbol "light" for Switch/push button, Single rocker studio white matt - 63x63	2520 LI-884	1	sztuka
2CKA001751A3193	Rocker with legend Symbol "light" for Switch/push button, Single rocker black matt - 63x63	2520 LI-885	1	sztuka
2CKA001751A3195	Rocker for Switch/push button, Single rocker grey metallic - 63x63	2520 TR-803	1	sztuka
2CKA001751A3197	Rocker with legend Symbol "key" for Switch/push button, Single rocker ivory white - 63x63	2520 TR-82	1	sztuka
2CKA001751A3198	Rocker with legend Symbol "key" for Switch/push button, Single rocker aluminium silver - 63x63	2520 TR-83	1	sztuka
2CKA001751A3199	Rocker with legend Symbol "key" for Switch/push button, Single rocker studio white - 63x63	2520 TR-84	1	sztuka
2CKA001751A3200	Rocker with legend Symbol "key" for Switch/push button, Single rocker stainless steel - Pure Stainless Steel	2520 TR-866	1	sztuka
2CKA001751A3201	Rocker with legend Symbol "key" for Switch/push button, Single rocker studio white matt - 63x63	2520 TR-884	1	sztuka

2CKA001751A3202	Rocker with legend Symbol "key" for Switch/push button, Single rocker black matt - 63x63	2520 TR-885	1	sztuka
2CKA001724A4407	Cover plate Bore hole grey metallic - 63x63	2533-803	1	sztuka
2CKA001724A4255	Cover plate Bore hole 1 gang ivory white - 63x63	2533-82	1	sztuka
2CKA001724A4382	Cover plate Bore hole 1 gang yellow - 63x63	2533-82-15	1	sztuka
2CKA001724A4261	Cover plate Bore hole 1 gang aluminium silver - 63x63	2533-83	1	sztuka
2CKA001724A4256	Cover plate Bore hole 1 gang studio white - 63x63	2533-84	1	sztuka
2CKA001724A4270	Cover plate Bore hole 1 gang stainless steel - Pure Stainless Steel	2533-866	1	sztuka
2CKA001724A4296	Cover plate Bore hole 1 gang studio white matt - 63x63	2533-884	1	sztuka
2CKA001724A4301	Cover plate Bore hole 1 gang black matt - 63x63	2533-885	1	sztuka
2CKA001710A4125	Cover plate with legend Symbol "0-1-2-3" for Level switch, Turn button grey metallic - 63x63	2542 DR/01-803	1	sztuka
2CKA001710A3645	Cover plate with legend Symbol "0-1-2-3" for Level switch, Turn button ivory white - 63x63	2542 DR/01-82	1	sztuka
2CKA001710A3671	Cover plate with legend Symbol "0-1-2-3" for Level switch, Turn button aluminium silver - 63x63	2542 DR/01-83	1	sztuka
2CKA001710A3646	Cover plate with legend Symbol "0-1-2-3" for Level switch, Turn button studio white - 63x63	2542 DR/01-84	1	sztuka
2CKA001710A3758	Cover plate with legend Symbol "0-1-2-3" for Level switch, Turn button stainless steel - Pure Stainless Steel	2542 DR/01-866	1	sztuka
2CKA001710A3890	Cover plate with legend Symbol "0-1-2-3" for Level switch, Turn button studio white matt - 63x63	2542 DR/01-884	1	sztuka
2CKA001710A3913	Cover plate with legend Symbol "0-1-2-3" for Level switch, Turn button black matt - 63x63	2542 DR/01-885	1	sztuka
2CKA001710A4126	Cover plate with legend Symbol "1-2-3" for Level switch, Turn button grey metallic - 63x63	2542 DR/02-803	1	sztuka
2CKA001710A3650	Cover plate with legend Symbol "1-2-3" for Level switch, Turn button ivory white - 63x63	2542 DR/02-82	1	sztuka
2CKA001710A3672	Cover plate with legend Symbol "1-2-3" for Level switch, Turn button aluminium silver - 63x63	2542 DR/02-83	1	sztuka
2CKA001710A3651	Cover plate with legend Symbol "1-2-3" for Level switch, Turn button studio white - 63x63	2542 DR/02-84	1	sztuka
2CKA001710A3759	Cover plate with legend Symbol "1-2-3" for Level switch, Turn button stainless steel - Pure Stainless Steel	2542 DR/02-866	1	sztuka
2CKA001710A3891	Cover plate with legend Symbol "1-2-3" for Level switch, Turn button studio white matt - 63x63	2542 DR/02-884	1	sztuka
2CKA001710A3914	Cover plate with legend Symbol "1-2-3" for Level switch, Turn button black matt - 63x63	2542 DR/02-885	1	sztuka
2CKA001724A4385	Cover plate Call unit studio white - 63x63	2548-020 F-84	1	sztuka
2CKA001724A4387	Cover plate Czerwony studio white - 63x63	2548-022 A-84	1	sztuka
2CKA001724A4388	Cover plate Doctor Niebieski studio white - 63x63	2548-022 AR-84	1	sztuka
2CKA001724A4389	Cover plate Call module Czerwony studio white - 63x63	2548-022 B-84	1	sztuka
2CKA001724A4390	Cover plate Pull-cord switch studio white - 63x63	2548-046 A-84	1	sztuka
2CKA001724A4391	Cover plate Call module Czerwony studio white - 63x63	2548-071 D-84	1	sztuka

2CKA001724A4392	Cover plate Call module Czerwony studio white - 63x63	2548-071 E-84	1	sztuka
2CKA001724A4393	Cover plate Call / reset Red / Green studio white - 63x63	2548-642 B-84	1	sztuka
2CKA001724A4395	Cover plate Reset Zielony studio white - 63x63	2548-642 C-84	1	sztuka
2CKA001724A4398	Cover plate XLR grey metallic - 63x63	2553-803	1	sztuka
2CKA001724A4400	Cover plate XLR 1 gang ivory white - 63x63	2553-82	1	sztuka
2CKA001724A4401	Cover plate XLR 1 gang aluminium silver - 63x63	2553-83	1	sztuka
2CKA001724A4402	Cover plate XLR 1 gang studio white - 63x63	2553-84	1	sztuka
2CKA001724A4403	Cover plate XLR 1 gang stainless steel - Pure Stainless Steel	2553-866	1	sztuka
2CKA001724A4404	Cover plate XLR 1 gang studio white matt - 63x63	2553-884	1	sztuka
2CKA001724A4405	Cover plate XLR 1 gang black matt - 63x63	2553-885	1	sztuka
2CKA001753A0316	Cover plate Modular Jack 2 gang grey metallic - 63x63	2561-02-803	1	sztuka
2CKA001753A0392	Cover plate Modular Jack ivory white - 63x63	2561-02-82	1	sztuka
2CKA001753A0393	Cover plate Modular Jack 2 gang aluminium silver - 63x63	2561-02-83	1	sztuka
2CKA001753A0394	Cover plate Modular Jack 2 gang studio white - 63x63	2561-02-84	1	sztuka
2CKA001753A0395	Cover plate Modular Jack 2 gang stainless steel - Pure Stainless Steel	2561-02-866	1	sztuka
2CKA001753A0396	Cover plate Modular Jack 2 gang studio white matt - 63x63	2561-02-884	1	sztuka
2CKA001753A0397	Cover plate Modular Jack 2 gang black matt - 63x63	2561-02-885	1	sztuka
2CKA001753A0399	Cover plate Modular Jack 1 gang grey metallic - 63x63	2561-803	1	sztuka
2CKA001753A0401	Cover plate Modular Jack 1 gang ivory white - 63x63	2561-82	1	sztuka
2CKA001753A0402	Cover plate Modular Jack 1 gang aluminium silver - 63x63	2561-83	1	sztuka
2CKA001753A0403	Cover plate Modular Jack 1 gang studio white - 63x63	2561-84	1	sztuka
2CKA001753A0404	Cover plate Modular Jack 1 gang stainless steel - Pure Stainless Steel	2561-866	1	sztuka
2CKA001753A0405	Cover plate Modular Jack 1 gang studio white matt - 63x63	2561-884	1	sztuka
2CKA001753A0406	Cover plate Modular Jack 1 gang black matt - 63x63	2561-885	1	sztuka
2CKA003116A0666	FI-Schukomat SCHUKO® socket insert Protective Contact (SCHUKO) 30 mA grey metallic - 63x63	3120 EUCB-803	1	sztuka
2CKA003116A0661	FI-Schukomat SCHUKO® socket insert Without imprint Safety Shutter ivory white - 63x63	3120 EUCB-82	1	sztuka
2CKA003116A0668	FI-Schukomat SCHUKO® socket insert Protective Contact (SCHUKO) 30 mA aluminium silver - 63x63	3120 EUCB-83	1	sztuka
2CKA003116A0662	FI-Schukomat SCHUKO® socket insert Protective Contact (SCHUKO) 30 mA studio white - 63x63	3120 EUCB-84	1	sztuka
2CKA003116A0669	FI-Schukomat SCHUKO® socket insert Protective Contact (SCHUKO) 30 mA stainless steel - Pure Stainless Steel	3120 EUCB-866	1	sztuka

2CKA003116A0670	FI-Schukomat SCHUKO® socket insert Protective Contact (SCHUKO) 30 mA studio white matt - 63x63	3120 EUCB-884	1	sztuka
2CKA003116A0671	FI-Schukomat SCHUKO® socket insert Protective Contact (SCHUKO) 30 mA black matt - 63x63	3120 EUCB-885	1	sztuka
2CKA003117A0008	Buschmat RCD - Insert RCD 30 mA grey metallic - 63x63	3151 UC-803	1	sztuka
2CKA003117A0005	Buschmat RCD - Insert RCD 30 mA ivory white - 63x63	3151 UC-82	1	sztuka
2CKA003117A0010	Buschmat RCD - Insert RCD 30 mA aluminium silver - 63x63	3151 UC-83	1	sztuka
2CKA003117A0006	Buschmat RCD - Insert RCD 30 mA studio white - 63x63	3151 UC-84	1	sztuka
2CKA003117A0011	Buschmat RCD - Insert RCD 30 mA stainless steel - Pure Stainless Steel	3151 UC-866	1	sztuka
2CKA003117A0012	Buschmat RCD - Insert RCD 30 mA studio white matt - 63x63	3151 UC-884	1	sztuka
2CKA003117A0013	Buschmat RCD - Insert RCD 30 mA black matt - 63x63	3151 UC-885	1	sztuka
2CKA006115A0489	6108/61-803-500 Coverplate f. CE	6108/61-803-500	1	sztuka
2CKA006115A0484	6108/61-82-500 Coverplate f. CE	6108/61-82-500	1	sztuka
2CKA006115A0485	6108/61-83-500 Coverplate f. CE	6108/61-83-500	1	sztuka
2CKA006155A0121	6108/61-840-500 Coverplate f. CE	6108/61-840-500	1	sztuka
2CKA006115A0486	6108/61-84-500 Coverplate f. CE	6108/61-84-500	1	sztuka
2CKA006115A0492	6108/61-866-500 Coverplate f. CE	6108/61-866-500	1	sztuka
2CKA006115A0487	6108/61-884-500 Coverplate f. CE	6108/61-884-500	1	sztuka
2CKA006115A0488	6108/61-885-500 Coverplate f. CE	6108/61-885-500	1	sztuka
2CKA006155A0066	6109/03-803-500 Coverplate f. RTC	6109/03-803-500	1	sztuka
2CKA006155A0061	6109/03-82-500 Coverplate f. RTC	6109/03-82-500	1	sztuka
2CKA006155A0062	6109/03-83-500 Coverplate f. RTC	6109/03-83-500	1	sztuka
2CKA006155A0114	6109/03-840-500 Coverplate f. RTC	6109/03-840-500	1	sztuka
2CKA006155A0063	6109/03-84-500 Coverplate f. RTC	6109/03-84-500	1	sztuka
2CKA006155A0069	6109/03-866-500 Coverplate f. RTC	6109/03-866-500	1	sztuka
2CKA006155A0064	6109/03-884-500 Coverplate f. RTC	6109/03-884-500	1	sztuka
2CKA006155A0065	6109/03-885-500 Coverplate f. RTC	6109/03-885-500	1	sztuka
2CKA006132A0382	Reflex SI / Busch-Duro 2000SI for Push Button Coupling Units Horizontal 0 ... 180 ° grey metallic	6122/10-803-500	1	sztuka

2CKA006132A0377	Reflex SI / Busch-Duro 2000SI for Push Button Coupling Units Horizontal 0 ... 180 ° ivory white	6122/10-82- 500	1	sztuka
2CKA006132A0378	Reflex SI / Busch-Duro 2000SI for Push Button Coupling Units Horizontal 0 ... 180 ° aluminium silver	6122/10-83- 500	1	sztuka
2CKA006132A0407	6122/10-840-500 BW standard	6122/10-840- 500	1	sztuka
2CKA006132A0379	Reflex SI / Busch-Duro 2000SI for Push Button Coupling Units Horizontal 0 ... 180 ° studio white	6122/10-84- 500	1	sztuka
2CKA006132A0385	Reflex SI / Busch-Duro 2000SI for Push Button Coupling Units Horizontal 0 ... 180 ° stainless steel	6122/10-866- 500	1	sztuka
2CKA006132A0380	Reflex SI / Busch-Duro 2000SI for Push Button Coupling Units Horizontal 0 ... 180 ° studio white matt	6122/10-884- 500	1	sztuka
2CKA006132A0381	Reflex SI / Busch-Duro 2000SI for Push Button Coupling Units Horizontal 0 ... 180 ° black matt	6122/10-885- 500	1	sztuka
2CKA006115A0212	6125/01-803-500 Control element 1g w. BAU	6125/01-803- 500	1	sztuka
2CKA006115A0206	6125/01-82-500 Control element 1g w. BAU	6125/01-82- 500	1	sztuka
2CKA006115A0207	6125/01-83-500 Control element 1g w. BAU	6125/01-83- 500	1	sztuka
2CKA006115A0183	6125/01-84-500 Control element 1g w. BAU	6125/01-84- 500	1	sztuka
2CKA006115A0211	6125/01-866-500 Control element 1g w. BAU	6125/01-866- 500	1	sztuka
2CKA006115A0214	6125/01-884-500 Control element 1g w. BAU	6125/01-884- 500	1	sztuka
2CKA006115A0215	6125/01-885-500 Control element 1g w. BAU	6125/01-885- 500	1	sztuka
2CKA006115A0224	6125/02-803-500 Control element 1/2gang	6125/02-803- 500	1	sztuka
2CKA006115A0217	6125/02-82-500 Control element 1/2gang	6125/02-82- 500	1	sztuka
2CKA006115A0218	6125/02-83-500 Control element 1/2gang	6125/02-83- 500	1	sztuka
2CKA006115A0452	6125/02-840-500 cont.-element KNX 1g	6125/02-840- 500	1	sztuka
2CKA006115A0219	6125/02-84-500 Control element 1/2gang	6125/02-84- 500	1	sztuka
2CKA006115A0223	6125/02-866-500 Control element 1/2gang	6125/02-866- 500	1	sztuka
2CKA006115A0226	6125/02-884-500 Control element 1/2gang	6125/02-884- 500	1	sztuka
2CKA006115A0227	6125/02-885-500 Control element 1/2gang	6125/02-885- 500	1	sztuka
2CKA006116A0202	6126/01-803-500 Control element 2g w. BAU	6126/01-803- 500	1	sztuka
2CKA006116A0196	6126/01-82-500 Control element 2g w. BAU	6126/01-82- 500	1	sztuka
2CKA006116A0197	6126/01-83-500 Control element 2g w. BAU	6126/01-83- 500	1	sztuka

2CKA006116A0174	6126/01-84-500 Control element 2g w. BAU	6126/01-84-500	1	sztuka
2CKA006116A0201	6126/01-866-500 Control element 2g w. BAU	6126/01-866-500	1	sztuka
2CKA006116A0204	6126/01-884-500 Control element 2g w. BAU	6126/01-884-500	1	sztuka
2CKA006116A0205	6126/01-885-500 Control element 2g w. BAU	6126/01-885-500	1	sztuka
2CKA006116A0214	6126/02-803-500 Control element 2/4gang	6126/02-803-500	1	sztuka
2CKA006116A0207	6126/02-82-500 Control element 2/4gang	6126/02-82-500	1	sztuka
2CKA006116A0208	6126/02-83-500 Control element 2/4gang	6126/02-83-500	1	sztuka
2CKA006116A0227	6126/02-840-500 cont.-element KNX 2g	6126/02-840-500	1	sztuka
2CKA006116A0209	6126/02-84-500 Control element 2/4gang	6126/02-84-500	1	sztuka
2CKA006116A0213	6126/02-866-500 Control element 2/4gang	6126/02-866-500	1	sztuka
2CKA006116A0216	6126/02-884-500 Control element 2/4gang	6126/02-884-500	1	sztuka
2CKA006116A0217	6126/02-885-500 Control element 2/4gang	6126/02-885-500	1	sztuka
2CKA006117A0228	6127/01-803-500 Control element 4g w. BAU	6127/01-803-500	1	sztuka
2CKA006117A0222	6127/01-82-500 Control element 4g w. BAU	6127/01-82-500	1	sztuka
2CKA006117A0223	6127/01-83-500 Control element 4g w. BAU	6127/01-83-500	1	sztuka
2CKA006117A0200	6127/01-84-500 Control element 4g w. BAU	6127/01-84-500	1	sztuka
2CKA006117A0227	6127/01-866-500 Control element 4g w. BAU	6127/01-866-500	1	sztuka
2CKA006117A0230	6127/01-884-500 Control element 4g w. BAU	6127/01-884-500	1	sztuka
2CKA006117A0231	6127/01-885-500 Control element 4g w. BAU	6127/01-885-500	1	sztuka
2CKA006117A0240	6127/02-803-500 Control element 4/8gang	6127/02-803-500	1	sztuka
2CKA006117A0233	6127/02-82-500 Control element 4/8gang	6127/02-82-500	1	sztuka
2CKA006117A0234	6127/02-83-500 Control element 4/8gang	6127/02-83-500	1	sztuka
2CKA006117A0252	6127/02-840-500 cont.-element KNX 4g	6127/02-840-500	1	sztuka
2CKA006117A0235	6127/02-84-500 Control element 4/8gang	6127/02-84-500	1	sztuka
2CKA006117A0239	6127/02-866-500 Control element 4/8gang	6127/02-866-500	1	sztuka
2CKA006117A0242	6127/02-884-500 Control element 4/8gang	6127/02-884-500	1	sztuka
2CKA006117A0243	6127/02-885-500 Control element 4/8gang	6127/02-885-500	1	sztuka

2CKA006134A0336	6128/28-803-500 RTC Control element 2/4g	6128/28-803-500	1	sztuka
2CKA006134A0332	6128/28-82-500 RTC Control element 2/4g	6128/28-82-500	1	sztuka
2CKA006134A0333	6128/28-83-500 RTC Control element 2/4g	6128/28-83-500	1	sztuka
2CKA006134A0342	6128/28-840-500 RTC Control element 2/4g	6128/28-840-500	1	sztuka
2CKA006134A0334	6128/28-84-500 RTC Control element 2/4g	6128/28-84-500	1	sztuka
2CKA006134A0335	6128/28-866-500 RTC Control element 2/4g	6128/28-866-500	1	sztuka
2CKA006134A0338	6128/28-884-500 RTC Control element 2/4g	6128/28-884-500	1	sztuka
2CKA006134A0339	6128/28-885-500 RTC Control element 2/4g	6128/28-885-500	1	sztuka
2CKA006135A0163	6129/01-803-500 Control element 3/6g w. IR	6129/01-803-500	1	sztuka
2CKA006135A0157	6129/01-82-500 Control element 3/6g w. IR	6129/01-82-500	1	sztuka
2CKA006135A0158	6129/01-83-500 Control element 3/6g w. IR	6129/01-83-500	1	sztuka
2CKA006135A0146	6129/01-84-500 Control element 3/6g w. IR	6129/01-84-500	1	sztuka
2CKA006135A0162	6129/01-866-500 Control element 3/6g w. IR	6129/01-866-500	1	sztuka
2CKA006135A0165	6129/01-884-500 Control element 3/6g w. IR	6129/01-884-500	1	sztuka
2CKA006135A0166	6129/01-885-500 Control element 3/6g w. IR	6129/01-885-500	1	sztuka
2CKA006430A0350	Control Element Symbol "arrows" for Venetian blind grey metallic - 63x63	6430-803-102	1	sztuka
2CKA006430A0327	Busch-Jalousiecontrol® II Control element with legend Symbol "arrows" for Venetian blind One-part rocker ivory white - 63x63	6430-82-102	1	sztuka
2CKA006430A0328	Busch-Jalousiecontrol® II Control element with legend Symbol "arrows" for Venetian blind One-part rocker aluminium silver - 63x63	6430-83-102	1	sztuka
2CKA006430A0400	6430-84-102-500 Control Cover	6430-84-102-500	1	sztuka
2CKA006430A0343	Busch-Jalousiecontrol® II Control element with legend Symbol "arrows" for Venetian blind One-part rocker stainless steel - Pure Stainless Steel	6430-866-102	1	sztuka
2CKA006430A0385	Busch-Jalousiecontrol® II Control element with legend Symbol "arrows" for Venetian blind One-part rocker studio white matt - 63x63	6430-884-102	1	sztuka
2CKA006430A0386	Busch-Jalousiecontrol® II Control element with legend Symbol "arrows" for Venetian blind One-part rocker black matt - 63x63	6430-885-102	1	sztuka
2CKA006430A0351	Cover plate with legend Various symbols for Time switch Central cover plate grey metallic - 63x63	6435-803	1	sztuka
2CKA006430A0304	Cover plate with legend Symbol "arrows" and "ok" for Time switch Central cover plate ivory white - 63x63	6435-82	1	sztuka

2CKA006430A0305	Cover plate with legend Symbol "arrows" and "ok" for Time switch Central cover plate aluminium silver - 63x63	6435-83	1	sztuka
2CKA006430A0306	Cover plate with legend Symbol "arrows" and "ok" for Time switch Central cover plate studio white - 63x63	6435-84	1	sztuka
2CKA006430A0344	Cover plate with legend Symbol "arrows" and "ok" for Time switch Central cover plate stainless steel - Pure Stainless Steel	6435-866	1	sztuka
2CKA006430A0388	Cover plate with legend Symbol "arrows" and "ok" for Time switch Central cover plate studio white matt - 63x63	6435-884	1	sztuka
2CKA006430A0389	Cover plate with legend Symbol "arrows" and "ok" for Time switch Central cover plate black matt - 63x63	6435-885	1	sztuka
2CKA006470A0006	Cover plate Symbol "key/door" for Proximity switch One-part button grey metallic - 63x63	6476-803	1	sztuka
2CKA006470A0003	Cover plate None for Proximity switch One-part button ivory white - 63x63	6476-82	1	sztuka
2CKA006470A0008	Cover plate None for Proximity switch One-part button aluminium silver - 63x63	6476-83	1	sztuka
2CKA006470A0009	Cover plate None for Proximity switch One-part button stainless steel - Pure Stainless Steel	6476-866	1	sztuka
2CKA006470A0010	Cover plate None for Proximity switch One-part button studio white matt - 63x63	6476-884	1	sztuka
2CKA006470A0011	Cover plate None for Proximity switch One-part button black matt - 63x63	6476-885	1	sztuka
2CKA006400A0060	Cover plate PowerDock 1 gang grey metallic - 63x63	6477-803	1	sztuka
2CKA006400A0057	Cover plate PowerDock 1 gang white - 63x63	6477-82	1	sztuka
2CKA006400A0058	Cover plate PowerDock 1 gang aluminium silver - 63x63	6477-83	1	sztuka
2CKA006400A0059	Cover plate PowerDock 1 gang studio white - 63x63	6477-84	1	sztuka
2CKA006400A0064	Cover plate PowerDock 1 gang stainless steel - Pure Stainless Steel	6477-866	1	sztuka
2CKA006400A0062	Cover plate PowerDock 1 gang studio white matt - 63x63	6477-884	1	sztuka
2CKA006400A0063	Cover plate PowerDock 1 gang black matt - 63x63	6477-885	1	sztuka
2CKA006599A2980	Cover plate None for Dimmer Turn button with Neon lamp grey metallic - 63x63	6540-803-102	1	sztuka
2CKA006599A2951	Cover plate None for Dimmer Turn button with Neon lamp ivory white - 63x63	6540-82-102	1	sztuka
2CKA006599A2952	Cover plate None for Dimmer Turn button with Neon lamp aluminium silver - 63x63	6540-83-102	1	sztuka
2CKA006599A3009	6540-84-102-500 Center Pl. SF Dimmer	6540-84-102-500	1	sztuka
2CKA006599A2959	Cover plate None for Dimmer Turn button with Neon lamp stainless steel - Pure Stainless Steel	6540-866-102	1	sztuka
2CKA006599A2961	Cover plate None for Dimmer Turn button with Neon lamp studio white matt - 63x63	6540-884-102	1	sztuka
2CKA006599A2966	Cover plate None for Dimmer Turn button with Neon lamp black matt - 63x63	6540-885-102	1	sztuka

2CKA006599A2832	Cover plate None for Cooling Central cover plate ivory white - 63x63	6541-82	1	sztuka
2CKA006599A2885	Cover plate None for Cooling Central cover plate aluminium silver - 63x63	6541-83	1	sztuka
2CKA006599A2835	Cover plate None for Cooling Central cover plate studio white - 63x63	6541-84	1	sztuka
2CKA006599A2924	Cover plate None for Cooling Central cover plate stainless steel - Pure Stainless Steel	6541-866	1	sztuka
2CKA006599A2962	Cover plate None for Cooling Central cover plate studio white matt - 63x63	6541-884	1	sztuka
2CKA006599A2967	Cover plate None for Cooling Central cover plate black matt - 63x63	6541-885	1	sztuka
2CKA006599A2831	Control Element None for Switch/dimmer Single push button ivory white - 63x63	6543-82-101	1	sztuka
2CKA006599A2887	Control Element None for Switch/dimmer Single push button aluminium silver - 63x63	6543-83-101	1	sztuka
2CKA006599A3010	6543-84-101-500 Dimmer Control Cover	6543-84-101-500	1	sztuka
2CKA006599A2926	Control Element None for Switch/dimmer Single push button stainless steel - Pure Stainless Steel	6543-866-101	1	sztuka
2CKA006599A2963	Control Element None for Switch/dimmer Single push button studio white matt - 63x63	6543-884-101	1	sztuka
2CKA006599A2968	Control Element None for Switch/dimmer Single push button black matt - 63x63	6543-885-101	1	sztuka
2CKA006599A2943	Control Element None for Dimmer Two-part button with Neon lamp grey metallic - 63x63	6545-803	1	sztuka
2CKA006599A2907	Control Element None for Dimmer Two-part button with Neon lamp ivory white - 63x63	6545-82	1	sztuka
2CKA006599A2914	Control Element None for Dimmer Two-part button with Neon lamp aluminium silver - 63x63	6545-83	1	sztuka
2CKA006599A2908	Control Element None for Dimmer Two-part button with Neon lamp studio white - 63x63	6545-84	1	sztuka
2CKA006599A2927	Control Element None for Dimmer Two-part button with Neon lamp stainless steel - Pure Stainless Steel	6545-866	1	sztuka
2CKA006599A2964	Control Element None for Dimmer Two-part button with Neon lamp studio white matt - 63x63	6545-884	1	sztuka
2CKA006599A2969	Control Element None for Dimmer Two-part button with Neon lamp black matt - 63x63	6545-885	1	sztuka
2CKA006710A0011	Kits 4 chan. Zigbee studio white - future linear	6716 UJ-84-500	1	sztuka
2CKA006730A0032	Electronic Controls 1 channel Radio Control ivory white - 63x63	6731-82-500	1	sztuka
2CKA006730A0035	Electronic Controls 1 channel Radio Control aluminium silver - 63x63	6731-83-500	1	sztuka
2CKA006730A0038	Electronic Controls 1 channel Radio Control studio white - 63x63	6731-84-500	1	sztuka
2CKA006730A0041	WaveLine Electronic Controls 1 channel Radio Control stainless steel - Pure Stainless Steel	6731-866-500	1	sztuka
2CKA006730A0033	Electronic Controls 2 channel Radio Control ivory white - 63x63	6732-82-500	1	sztuka
2CKA006730A0036	Electronic Controls 2 channel Radio Control aluminium silver - 63x63	6732-83-500	1	sztuka

2CKA006730A0039	Electronic Controls 2 channel Radio Control studio white - 63x63	6732-84-500	1	sztuka
2CKA006730A0042	Wall sensor 2 channel Radio Control stainless steel - Pure Stainless Steel	6732-866-500	1	sztuka
2CKA006730A0034	Electronic Controls 4 channel Radio Control ivory white - 63x63	6733-82-500	1	sztuka
2CKA006730A0037	Electronic Controls 4 channel Radio Control aluminium silver - 63x63	6733-83-500	1	sztuka
2CKA006730A0040	6733-84-500 RF-Switch Sensor 4-fold	6733-84-500	1	sztuka
2CKA006730A0043	Electronic Controls 4 channel Radio Control stainless steel - Pure Stainless Steel	6733-866-500	1	sztuka
2CKA006730A0137	Control Element None for Dimmer Two-part button grey metallic - 63x63	6736 FoH-803	1	sztuka
2CKA006730A0134	Control Element None for Dimmer Two-part button beige - 63x63	6736 FoH-82	1	sztuka
2CKA006730A0135	Control Element None for Dimmer Two-part button aluminium - 63x63	6736 FoH-83	1	sztuka
2CKA006730A0136	Control Element None for Dimmer Two-part button studio white - 63x63	6736 FoH-84	1	sztuka
2CKA006730A0139	Control Element None for Dimmer Two-part button stainless steel - Pure Stainless Steel	6736 FoH-866	1	sztuka
2CKA006730A0140	Control Element None for Dimmer Two-part button studio white matt - 63x63	6736 FoH-884	1	sztuka
2CKA006730A0141	Control Element None for Dimmer Two-part button black matt - 63x63	6736 FoH-885	1	sztuka
2CKA006800A2830	Electronic Controls ivory white - 63x63	6815-82-101-500	1	sztuka
2CKA006800A2832	Electronic Controls aluminium silver - 63x63	6815-83-101-500	1	sztuka
2CKA006800A2834	Electronic Controls studio white - 63x63	6815-84-101-500	1	sztuka
2CKA006800A2843	Electronic Controls stainless steel - Pure Stainless Steel	6815-866-101-500	1	sztuka
2CKA008200A0253	Cover plate with legend Radio 0 gang aluminium silver - 63x63	8252-83-101-500	1	sztuka
2CKA008200A0255	Cover plate with legend Radio 0 gang studio white - 63x63	8252-84-101-500	1	sztuka
2CKA008200A0264	Cover plate with legend Radio 0 gang stainless steel - Pure Stainless Steel	8252-866-101-500	1	sztuka
2CKA008200A0261	Cover plate with legend Radio 0 gang black matt - 63x63	8252-885-101-500	1	sztuka
2CKA008200A0115	Cover plate Loudspeaker grey metallic - 63x63	8253-803	1	sztuka
2CKA008200A0079	Cover plate Loudspeaker ivory white - 63x63	8253-82	1	sztuka
2CKA008200A0080	Cover plate Loudspeaker aluminium silver - 63x63	8253-83	1	sztuka
2CKA008200A0081	Cover plate Loudspeaker studio white - 63x63	8253-84	1	sztuka
2CKA008200A0087	Cover plate Loudspeaker stainless steel - Pure Stainless Steel	8253-866	1	sztuka
2CKA008200A0123	Cover plate Loudspeaker studio white matt - 63x63	8253-884	1	sztuka
2CKA008200A0126	Cover plate Loudspeaker black matt - 63x63	8253-885	1	sztuka
2CKA008300A0225	83260-84-515 Cover plates, Indoor St.	83260-84-515	1	sztuka

2CKA006220A0566	CP-FCC-803 C-plate Fan Coil	CP-FCC-803	1	sztuka
2CKA006220A0532	CP-FCC-82 C-plate Fan Coil	CP-FCC-82	1	sztuka
2CKA006220A0243	CP-FCC-83 C-plate Fan Coil	CP-FCC-83	1	sztuka
2CKA006220A0244	CP-FCC-84 C-plate Fan Coil	CP-FCC-84	1	sztuka
2CKA006220A0549	CP-FCC-866 C-plate Fan Coil	CP-FCC-866	1	sztuka
2CKA006220A0617	CP-FCC-884 C-plate Fan Coil	CP-FCC-884	1	sztuka
2CKA006220A0634	CP-FCC-885 C-plate Fan Coil	CP-FCC-885	1	sztuka
2CKA006220A0563	CP-RTC-803 C-plate RT sensor unit	CP-RTC-803	1	sztuka
2CKA006220A0529	CP-RTC-82 C-plate RT sensor unit	CP-RTC-82	1	sztuka
2CKA006220A0180	CP-RTC-83 C-plate RT sensor unit	CP-RTC-83	1	sztuka
2CKA006220A0181	CP-RTC-84 C-plate RT sensor unit	CP-RTC-84	1	sztuka
2CKA006220A0384	CP-RTC-840 c-plate temp.	CP-RTC-840	1	sztuka
2CKA006220A0546	CP-RTC-866 C-plate RT sensor unit	CP-RTC-866	1	sztuka
2CKA006220A0614	CP-RTC-884 C-plate RT sensor unit	CP-RTC-884	1	sztuka
2CKA006220A0631	CP-RTC-885 C-plate RT sensor unit	CP-RTC-885	1	sztuka
2CKA006220A0564	MD-F-1.0.1-803 Movement detector	MD-F-1.0.1-803	1	sztuka
2CKA006220A0530	MD-F-1.0.1-82 Movement detector	MD-F-1.0.1-82	1	sztuka
2CKA006220A0213	MD-F-1.0.1-83 Movement detector	MD-F-1.0.1-83	1	sztuka
2CKA006220A0214	MD-F-1.0.1-84 Movement detector	MD-F-1.0.1-84	1	sztuka
2CKA006220A0385	MD-F-1.0.1-840 WD 180 sens	MD-F-1.0.1-840	1	sztuka
2CKA006220A0547	MD-F-1.0.1-866 Movement detector	MD-F-1.0.1-866	1	sztuka
2CKA006220A0615	MD-F-1.0.1-884 Movement detector	MD-F-1.0.1-884	1	sztuka
2CKA006220A0632	MD-F-1.0.1-885 Movement detector	MD-F-1.0.1-885	1	sztuka
2CKA006220A0565	MSA-F-1.1.1-803 Mov. detector/actuator 1g	MSA-F-1.1.1-803	1	sztuka
2CKA006220A0084	MSA-F-1.1.1-82-WL WL-Mov. detector/act. 1g	MSA-F-1.1.1-82-WL	1	sztuka
2CKA006220A0216	MSA-F-1.1.1-83 Mov. detector/actuator 1g	MSA-F-1.1.1-83	1	sztuka
2CKA006220A0085	MSA-F-1.1.1-83-WL WL-Mov. detector/act. 1g	MSA-F-1.1.1-83-WL	1	sztuka
2CKA006220A0217	MSA-F-1.1.1-84 Mov. detector/actuator 1g	MSA-F-1.1.1-84	1	sztuka
2CKA006220A0386	MSA-F-1.1.1-840 WD 180 sens actuator	MSA-F-1.1.1-840	1	sztuka
2CKA006220A0086	MSA-F-1.1.1-84-WL WL-Mov. detector/act. 1g	MSA-F-1.1.1-84-WL	1	sztuka
2CKA006220A0548	MSA-F-1.1.1-866 Mov. detector/actuator 1g	MSA-F-1.1.1-866	1	sztuka
2CKA006220A0616	MSA-F-1.1.1-884 Mov. detector/actuator 1g	MSA-F-1.1.1-884	1	sztuka
2CKA006220A0097	MSA-F-1.1.1-884-WL WL-Mov. detector/act. 1g	MSA-F-1.1.1-884-WL	1	sztuka
2CKA006220A0633	MSA-F-1.1.1-885 Mov. detector/actuator 1g	MSA-F-1.1.1-885	1	sztuka

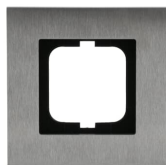
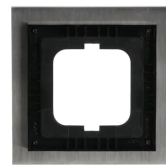
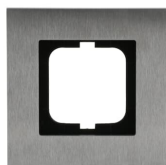
2CKA006200A0098	MSA-F-1.1.1-885-WL WL-Mov. detector/act. 1g	MSA-F-1.1.1-885-WL	1	sztuka
2CKA006220A0550	Electronic Controls grey metallic - 63x63	SR-1-803	1	sztuka
2CKA006220A0516	Electronic Controls ivory white - solo	SR-1-82	1	sztuka
2CKA006220A0138	Electronic Controls aluminium silver - 63x63	SR-1-83	1	sztuka
2CKA006220A0139	SR-1-84 rocker 1gang	SR-1-84	1	sztuka
2CKA006220A0371	Electronic Controls antique brass - 63x63	SR-1-840	1	sztuka
2CKA006220A0533	Electronic Controls stainless steel - solo	SR-1-866	1	sztuka
2CKA006220A0601	Electronic Controls studio white matt - 63x63	SR-1-884	1	sztuka
2CKA006220A0618	Electronic Controls black matt - 63x63	SR-1-885	1	sztuka
2CKA006220A0555	Electronic Controls grey metallic - 63x63	SR-2-803	1	sztuka
2CKA006220A0521	Electronic Controls ivory white - solo	SR-2-82	1	sztuka
2CKA006220A0153	Electronic Controls aluminium silver - 63x63	SR-2-83	1	sztuka
2CKA006220A0154	SR-2-84 rocker 2gang	SR-2-84	1	sztuka
2CKA006220A0376	Electronic Controls antique brass - 63x63	SR-2-840	1	sztuka
2CKA006220A0538	Electronic Controls stainless steel - solo	SR-2-866	1	sztuka
2CKA006220A0606	Electronic Controls studio white matt - 63x63	SR-2-884	1	sztuka
2CKA006220A0623	Electronic Controls black matt - 63x63	SR-2-885	1	sztuka
2CKA006220A0552	Electronic Controls grey metallic - 63x63	SRB-1-803	1	sztuka
2CKA006220A0518	Electronic Controls ivory white - solo	SRB-1-82	1	sztuka
2CKA006220A0144	Electronic Controls aluminium silver - 63x63	SRB-1-83	1	sztuka
2CKA006220A0145	SRB-1-84 rocker 1gang, blinds	SRB-1-84	1	sztuka
2CKA006220A0373	Electronic Controls antique brass - 63x63	SRB-1-840	1	sztuka
2CKA006220A0535	Electronic Controls stainless steel - solo	SRB-1-866	1	sztuka
2CKA006220A0603	Electronic Controls studio white matt - 63x63	SRB-1-884	1	sztuka
2CKA006220A0620	Electronic Controls black matt - 63x63	SRB-1-885	1	sztuka
2CKA006220A0557	Electronic Controls grey metallic - 63x63	SRB-2-803	1	sztuka
2CKA006220A0523	Electronic Controls ivory white - solo	SRB-2-82	1	sztuka
2CKA006220A0159	Electronic Controls aluminium silver - 63x63	SRB-2-83	1	sztuka
2CKA006220A0160	SRB-2-84 rocker 2g, blinds	SRB-2-84	1	sztuka
2CKA006220A0378	Electronic Controls antique brass - 63x63	SRB-2-840	1	sztuka
2CKA006220A0540	Electronic Controls stainless steel - solo	SRB-2-866	1	sztuka
2CKA006220A0608	Electronic Controls studio white matt - 63x63	SRB-2-884	1	sztuka
2CKA006220A0625	Electronic Controls black matt - 63x63	SRB-2-885	1	sztuka
2CKA006220A0554	Electronic Controls grey metallic - 63x63	SRD-1-803	1	sztuka
2CKA006220A0520	Electronic Controls ivory white - solo	SRD-1-82	1	sztuka
2CKA006220A0150	Electronic Controls aluminium silver - 63x63	SRD-1-83	1	sztuka
2CKA006220A0151	SRD-1-84 rocker 1gang, dimming	SRD-1-84	1	sztuka
2CKA006220A0375	Electronic Controls antique brass - 63x63	SRD-1-840	1	sztuka
2CKA006220A0537	Electronic Controls stainless steel - solo	SRD-1-866	1	sztuka
2CKA006220A0605	Electronic Controls studio white matt - 63x63	SRD-1-884	1	sztuka
2CKA006220A0622	Electronic Controls black matt - 63x63	SRD-1-885	1	sztuka
2CKA006220A0559	Electronic Controls grey metallic - 63x63	SRD-2-L-803	1	sztuka
2CKA006220A0525	Electronic Controls ivory white - solo	SRD-2-L-82	1	sztuka
2CKA006220A0165	Electronic Controls aluminium silver - 63x63	SRD-2-L-83	1	sztuka

2CKA006220A0166	SRD-2-L-84 rocker 2g, left, dimming	SRD-2-L-84	1	sztuka
2CKA006220A0380	Electronic Controls antique brass - 63x63	SRD-2-L-840	1	sztuka
2CKA006220A0542	Electronic Controls stainless steel - solo	SRD-2-L-866	1	sztuka
2CKA006220A0610	Electronic Controls studio white matt - 63x63	SRD-2-L-884	1	sztuka
2CKA006220A0627	Electronic Controls black matt - 63x63	SRD-2-L-885	1	sztuka
2CKA006220A0560	Electronic Controls grey metallic - 63x63	SRD-2-R-803	1	sztuka
2CKA006220A0526	Electronic Controls ivory white - solo	SRD-2-R-82	1	sztuka
2CKA006220A0259	Electronic Controls aluminium silver - 63x63	SRD-2-R-83	1	sztuka
2CKA006220A0260	SRD-2-R-84 rocker 2g, right, dimming	SRD-2-R-84	1	sztuka
2CKA006220A0383	Electronic Controls antique brass - 63x63	SRD-2-R-840	1	sztuka
2CKA006220A0543	Electronic Controls stainless steel - solo	SRD-2-R-866	1	sztuka
2CKA006220A0611	Electronic Controls studio white matt - 63x63	SRD-2-R-884	1	sztuka
2CKA006220A0628	Electronic Controls black matt - 63x63	SRD-2-R-885	1	sztuka
2CKA006220A0551	Electronic Controls grey metallic - 63x63	SRL-1-803	1	sztuka
2CKA006220A0517	Electronic Controls ivory white - solo	SRL-1-82	1	sztuka
2CKA006220A0141	Electronic Controls aluminium silver - 63x63	SRL-1-83	1	sztuka
2CKA006220A0142	SRL-1-84 rocker 1gang, lighting	SRL-1-84	1	sztuka
2CKA006220A0372	Electronic Controls antique brass - 63x63	SRL-1-840	1	sztuka
2CKA006220A0534	Electronic Controls stainless steel - solo	SRL-1-866	1	sztuka
2CKA006220A0602	Electronic Controls studio white matt - 63x63	SRL-1-884	1	sztuka
2CKA006220A0619	Electronic Controls black matt - 63x63	SRL-1-885	1	sztuka
2CKA006220A0556	Electronic Controls grey metallic - 63x63	SRL-2-L-803	1	sztuka
2CKA006220A0522	Electronic Controls ivory white - solo	SRL-2-L-82	1	sztuka
2CKA006220A0156	Electronic Controls aluminium silver - 63x63	SRL-2-L-83	1	sztuka
2CKA006220A0157	SRL-2-L-84 rocker 2g, left, lighting	SRL-2-L-84	1	sztuka
2CKA006220A0377	Electronic Controls antique brass - 63x63	SRL-2-L-840	1	sztuka
2CKA006220A0539	Electronic Controls stainless steel - solo	SRL-2-L-866	1	sztuka
2CKA006220A0607	Electronic Controls studio white matt - 63x63	SRL-2-L-884	1	sztuka
2CKA006220A0624	Electronic Controls black matt - 63x63	SRL-2-L-885	1	sztuka
2CKA006220A0561	Electronic Controls grey metallic - 63x63	SRL-2-R-803	1	sztuka
2CKA006220A0527	Electronic Controls ivory white - solo	SRL-2-R-82	1	sztuka
2CKA006220A0168	Electronic Controls aluminium silver - 63x63	SRL-2-R-83	1	sztuka
2CKA006220A0169	SRL-2-R-84 rocker 2g, right, lighting	SRL-2-R-84	1	sztuka
2CKA006220A0381	Electronic Controls antique brass - 63x63	SRL-2-R-840	1	sztuka
2CKA006220A0544	Electronic Controls stainless steel - solo	SRL-2-R-866	1	sztuka
2CKA006220A0612	Electronic Controls studio white matt - 63x63	SRL-2-R-884	1	sztuka
2CKA006220A0629	Electronic Controls black matt - 63x63	SRL-2-R-885	1	sztuka
2CKA006220A0553	Electronic Controls grey metallic - 63x63	SRS-1-803	1	sztuka
2CKA006220A0519	Electronic Controls ivory white - solo	SRS-1-82	1	sztuka
2CKA006220A0147	Electronic Controls aluminium silver - 63x63	SRS-1-83	1	sztuka
2CKA006220A0148	SRS-1-84 rocker 1gang, scene	SRS-1-84	1	sztuka
2CKA006220A0374	Electronic Controls antique brass - 63x63	SRS-1-840	1	sztuka
2CKA006220A0536	Electronic Controls stainless steel - solo	SRS-1-866	1	sztuka
2CKA006220A0604	Electronic Controls studio white matt - 63x63	SRS-1-884	1	sztuka

2CKA006220A0621	Electronic Controls black matt - 63x63	SRS-1-885	1	sztuka
2CKA006220A0558	Electronic Controls grey metallic - 63x63	SRS-2-L-803	1	sztuka
2CKA006220A0524	Electronic Controls ivory white - solo	SRS-2-L-82	1	sztuka
2CKA006220A0162	Electronic Controls aluminium silver - 63x63	SRS-2-L-83	1	sztuka
2CKA006220A0163	SRS-2-L-84 rocker 2gang, left, scene	SRS-2-L-84	1	sztuka
2CKA006220A0379	Electronic Controls antique brass - 63x63	SRS-2-L-840	1	sztuka
2CKA006220A0541	Electronic Controls stainless steel - solo	SRS-2-L-866	1	sztuka
2CKA006220A0609	Electronic Controls studio white matt - 63x63	SRS-2-L-884	1	sztuka
2CKA006220A0626	Electronic Controls black matt - 63x63	SRS-2-L-885	1	sztuka
2CKA006220A0562	Electronic Controls grey metallic - 63x63	SRS-2-R-803	1	sztuka
2CKA006220A0528	Electronic Controls ivory white - solo	SRS-2-R-82	1	sztuka
2CKA006220A0174	Electronic Controls aluminium silver - 63x63	SRS-2-R-83	1	sztuka
2CKA006220A0175	SRS-2-R-84 rocker 2g, right, scene	SRS-2-R-84	1	sztuka
2CKA006220A0382	Electronic Controls antique brass - 63x63	SRS-2-R-840	1	sztuka
2CKA006220A0545	Electronic Controls stainless steel - solo	SRS-2-R-866	1	sztuka
2CKA006220A0613	Electronic Controls studio white matt - 63x63	SRS-2-R-884	1	sztuka
2CKA006220A0630	Electronic Controls black matt - 63x63	SRS-2-R-885	1	sztuka

Kategorie

Produkty niskiego napięcia i systemy → Wiring Accessories - Light Switch Ranges → Frames



360°