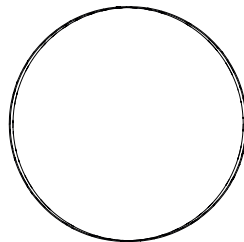


simon

TAPA ESTETICA EXTRAIBLE PARA FRENTE SCHUKO S100

REMOVABLE AESTHETIC COVER FOR
FRONT SCHUKO S100



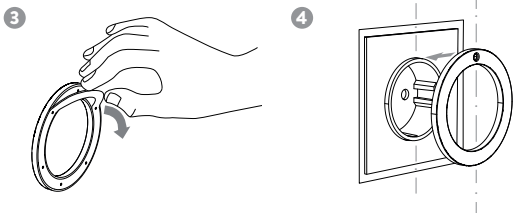
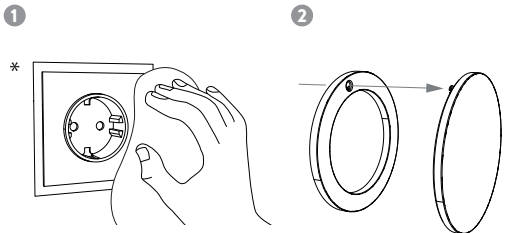
10000042-1XX

Características Técnicas
Data Sheet



simon

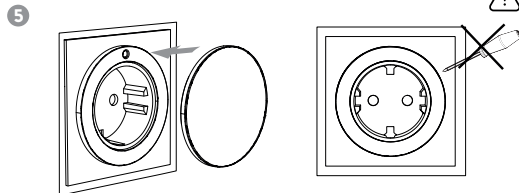
MONTAJE / ASSEMBLY



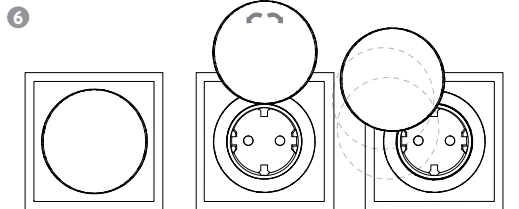
LIMPIEZA

* SIMON recomienda limpiar el material con agua y jabón neutro y asegurarse de emplear un paño suave que no contenga restos de partículas que puedan rayar el material y no el uso de materiales como, por ejemplo, papel de cocina, que suele contener fibras duras.

No deben usarse acetona ni limpiadores que contengan alcohol.



No se pueden utilizar herramientas para desmontarlo ya que puede rallar el metacrilato de la tapa. Además, el hecho de hacerlo supone romper la cola del adhesivo. You can not use tools to disassemble it since you can scratch the methacrylate on the lid. In addition, the fact of doing it supposes to break the adhesive.



CLEANING

SIMON recommends cleaning the material with water and neutral soap and safety for a soft cloth that does not contain traces of particles that can scratch the material and not the use of materials such as paper towels, which usually contain hard fibers.

You should not use acetone or cleaners that contain alcohol.