



K45 ANTI-VANDALISM MINI-TOWERS

Maximum strength: The metal structure of stainless steel and anodised aluminium, together with the plastic trims, provide the balance between mechanical resistance and aesthetics.



Industrial Buildings



Warehouses



Mechanical workshops



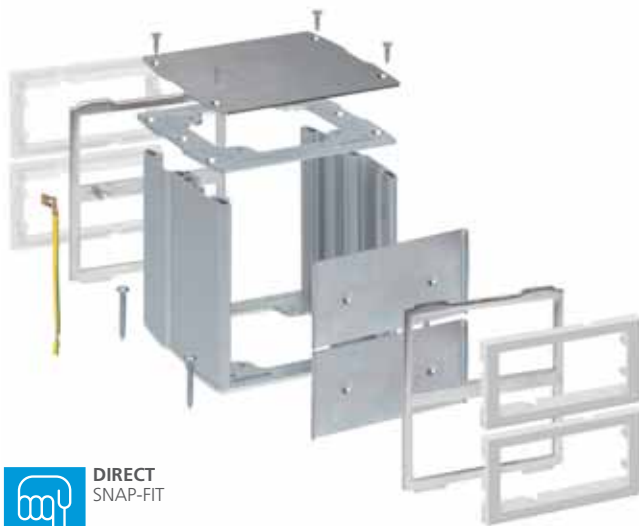
Education centres



Sports centres



DIRECT SNAP-FIT



K45 direct snap-fitting mini-towers: Optional direct snap-fit installation of up to 12 K45 mechanisms without the need for accessories.

✓ Metal divider plate

Guarantees the electromagnetic immunity of the Voice, Data and Multimedia (VDM) installation.



✓ Easy maintenance

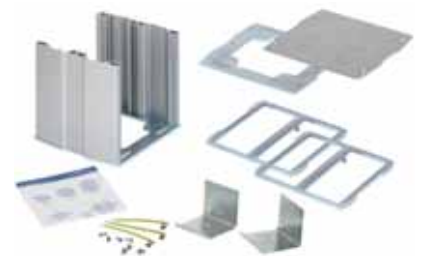
Fold-down inner frames that facilitate the installation and maintenance of connections.



See SIMON 500 CIMA towers on page 62

✓ With all necessary materials

Supplied with inner frames, trim, metal divider plate, connection cable with earth connection and all necessary hardware for installation.



Mechanisms, electrical sockets and plates from page 72

✓ With protective sheath

Protects the mechanisms from impact in adverse environments



✓ Combine with Simon 27 SCUDO

See page 49 from Simon General Catalogue 2010/2011





K45 DOUBLE SIDED MINI-TOWERS

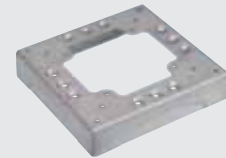
KT400 /8 2 K45 mechanisms per side

KT401 /8 2 K45 mechanisms per side with protective sheath

KT800 /8 4 K45 mechanisms per side

KT1200 /8 6 K45 mechanisms per side

0
Optional



KTA804 /8 Base

Accessories/Spare Parts



KTA401 /8

Protective sheath for KT400/8 mini-tower

FLUSH-MOUNT POWER SUPPLY

The mini-tower can be installed directly or by incorporating the base to elevate the mechanisms and achieve greater isolation from the floor.

Configuration example

Front face



Rear face



	Quantity	Ref./Finish	Description
Enclosure	1	KT800/8	K45 mini-tower, 4 mechanisms per side
Electrical sockets and plates	4	K11/14	K45 electrical socket, Schuko. Quick terminal connection, graphite
	4	KB96U/14	K45 flat V&D plate with 2 RJ45 connectors Cat. 6 UTP, graphite
	1	KTA804/8	Elevation base (optional)

POWER SUPPLY THROUGH FLOOR TRUNKING

Choose the corresponding base for the trunking section and distribution of the installation. *Floor trunking and bases on page 114*

Configuration example

Front face



Rear face



	Quantity	Ref./Finish	Description
Enclosure	1	KT1200/8	K45 Anti-vandalism mini-tower, 6 mechanisms per side
Electrical sockets and plates	3	K11/9	K45 electrical socket, Schuko Quick terminal connection, white
	3	K11/6	K45 electrical socket, Schuko Quick terminal connection, red
	2	AC11	Connection block for multi-sockets
	1	K106A/9	K45 plate with 10A automatic circuit-breaker, Curve C, white
	1	KB96U/9	K45 flat V&D plate with 2 RJ45 connectors, Cat. 6 UTP, white
	1	KA96U/9	Half-mech. plate K45 flat V&D plate with 1 RJ45 connector, Cat. 6 UTP, white
	1	K122/9	K45 Multimedia plate for 1 XLR connector, white
	1	K120A/9	K45 end CEI TV socket, screw-connection, white
	1	K100B/9	K45 multimedia plate with one (1) HD15 VGA female connector, white Screw connection
	1	K123B/9	K45 multimedia plate with one (1) 3.5 mm stereo mini-jack connector. Screw connection
	1	KTA804/8	Elevation base for 85x18 mm floor trunking, aluminium
	1	TF11172/8	85x18 mm DCS floor trunking