

Circularity Profile

Lexium LXM32 / LXM52 Servo Drive





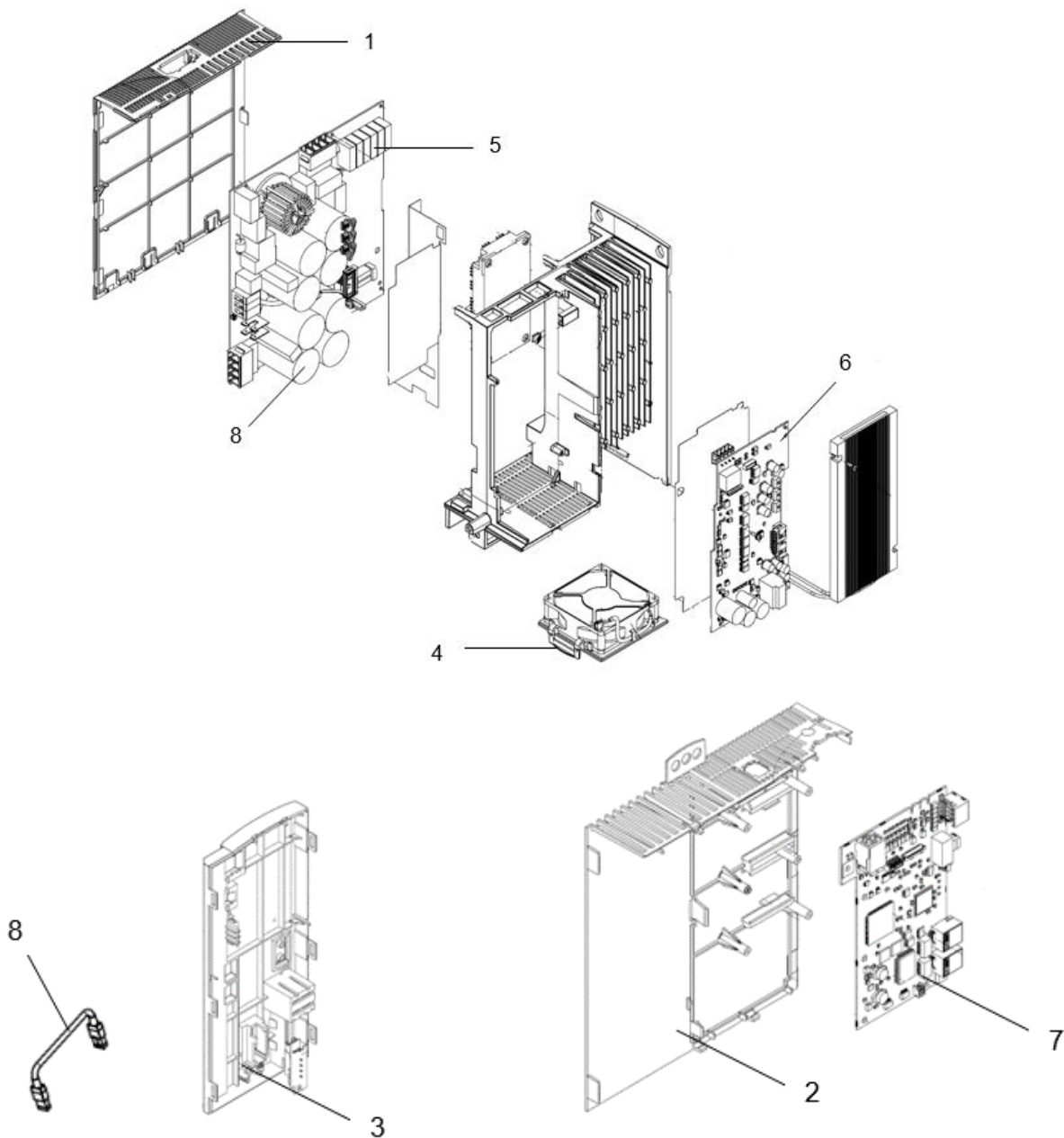
DANGER

HAZARD OF ELECTRIC SHOCK, EXPLOSION OR ARC FLASH

- Disconnect all power from all equipment including connected devices prior to removing any covers or doors, or installing or removing any accessories, hardware, cables, or wires except under the specific conditions specified in the appropriate hardware guide for this equipment.
- Wait 5 minutes to allow the internal capacitors to discharge.
- Always use a properly rated voltage sensing device to confirm the power is off where and when indicated.

Failure to follow these instructions will result in death or serious injury.

End of Life Instructions



Recommendation	Number on drawing	Component / Material	Weight (in g)	Comment
To be dismantled	1	Rightside housing	91,2	
To be dismantled	2	Leftside housing	142,8	
To be dismantled	3	Front face	99	
To be dismantled	4	Fan support	14,7	
To be depolluted	5	Cable (low current)	1350	
To be depolluted	5	Electronic Board (Power) > 10cm ²	1350	
To be depolluted	8	Cable Serco Bridge	18,7	
To be depolluted	9	Electrolytic capacitors (8)	80	



Product description

Manufacturer identification	Schneider Electric Industries SAS
Brand name	Schneider Electric
Product function	The Lexium LXM32 / LXM52 Servo Drives are ideally suited to implement compact, high-performance drive solutions for a wide range of power requirements.
Product reference	LXM52DD72C41000
Total representative product mass	4939 g
Representative product dimensions	247mm x 225mm x 108mm
Date of information release	08/2020



Additional information

Legal information	This product family is in the scope of European Union directive 2012/19/EU on Waste Electrical and Electronic Equipment (WEEE). The product family must be disposed according to the legislation of the country. This document is intended for use by end of life recyclers or treatment facilities. It provides the basic information to assure an appropriate end of life treatment for the components and materials of the product.	
Recyclability potential	60%	Based on "ECO'DEEE recyclability and recoverability calculation method" (version V1, 20 Sep. 2008 presented to the French Agency for Environment and Energy Management: ADEME).

Schneider Electric Industries SAS

Country Customer Care Center
<http://www.schneider-electric.com/contact>

35, rue Joseph Monier
 CS 30323
 F- 92506 Rueil Malmaison Cedex
 RCS Nanterre 954 503 439
 Capital social 896 313 776 €

www.schneider-electric.com

ENVEOL110605EN_V4

Published by Schneider Electric

© 2020 - Schneider Electric – All rights reserved

08/2020