

Product End of Life Instructions

Harmony S-Panel PC and Enclosed PC Performance

Harmony Industrial PC





Potential disassembly risks

⚠ WARNING

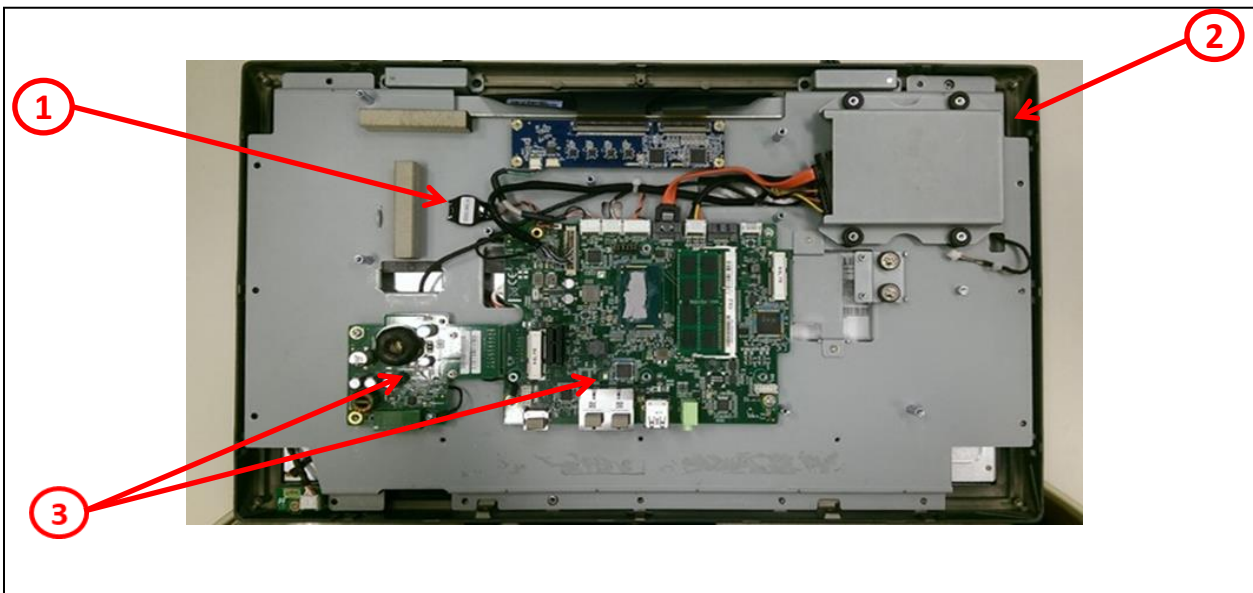
HAZARD OF ARC FLASH OR FIRE

- Disconnect battery terminals before disassembly
- Avoid any electrical connection between the terminals

Failure to follow these instructions can result in death or serious injury.



End of Life Instructions



Recommendation	Number on drawing	Component / Material	Weight (in g)	Comment
Potential hazards	1	Battery	1.2	
To be depolluted	2	LCD (surface > 100cm ²) and all those back-lighted with gas discharge lamps	1200.0	LCD
To be depolluted	3	Electronic Board (Communication) > 10cm ²	239.4	PCBA
Other			5139.4	



Product description

Manufacturer identification	Schneider Electric Industries SAS
Brand name	Schneider Electric
Product function	Slim, flexible and durable design industrial PC with multi touch screen
Product reference	HMIPS2KN3D8BC0NN0
Additional similar product references	HMIPL2N2BD4A14NM00 HMIPP26U7DACL0NN0 HMIPP2BU7DA8J0NN0 HMIPS2CNAD40N0NN0 HMIPS2CNAD4AQ0NN0 HMIPS2GNAD40N0NN0 HMIPS2GNAD4AQ0NN0 HMIPS2GNAD4AS0NN0 HMIPS2KN3D84C0XNV0 HMIPX2B7XD1Y4MNN0 HMIYP6ADFMA HPCCL2B2BD4D1EWP0 HPCCL2B5BD4A4ENNO HPCCP26U7DACL0NN0 HPCCP2BO7AACP0KN0 HPCCP2BU7DA8J0NN0 HPCCS2CNAD40N0NN0 HPCCS2HN3D8BF0NN0 HPCCS2KN3D84C0XNV HPCCS2KN3D8BC0NN0 HPCCU2BDCD80N0NN0 HPCCX2B7XD1Y4MNN0
Total representative product mass	6580 g
Representative product dimensions	309 x 488 x 56.7
Accessories	No
Date of information release	2023/09/22



Additional information

Legal information	This product family is in the scope of European Union directive 2012/19/EU on Waste Electrical and Electronic Equipment (WEEE). The product family must be disposed according to the legislation of the country. This document is intended for use by end of life recyclers or treatment facilities. It provides the basic information to assure an appropriate end of life treatment for the components and materials of the product.	
In case of special transportation: transportation method	No special transportation.	
Recyclability potential	48%	Recyclability rate has been calculated based on REEECY'LAB tool developed by Ecosystem, for components/materials not covered by the tool, data from the "ECO' DEEE recyclability and recoverability calculation method" was taken. If no data was found a conservative assumption was used (0% recyclability).

Schneider Electric Industries SAS

Country Customer Care Center
<http://www.se.com/contact>

35, rue Joseph Monier
CS 30323
F- 92500 Rueil Malmaison Cedex
RCS Nanterre 954 503 439
Capital social 928 298 512 €

www.se.com
ENVEOLI2307029_V1

Published by Schneider Electric
© 2023 - Schneider Electric – All rights reserved

2023/09/22