

Instruction Bulletin

Replaces 65013-037-29A (03/2000)

Lockout Attachment Class 9001, Type AEQ3587



The Class 9001, Type AEQ3587 lockout attachment holds the Class 9001, Type KR11 maintained, interlocked operator in the depressed position.

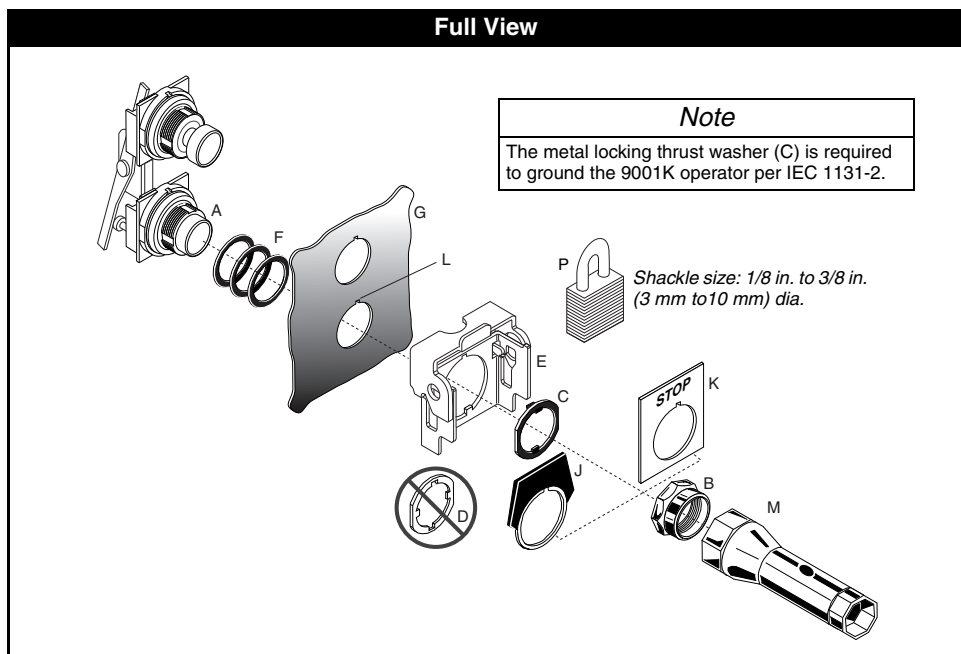
⚠ DANGER

HAZARD OF ELECTRIC SHOCK, EXPLOSION, OR ARC FLASH
 Disconnect all power before servicing.
Electric shock will result in death or serious injury.

⚠ WARNING

INADVERTENT OPERATION
 Use the correct number of compensating gaskets (see the table in Step 3 on page 2).
Failure to follow this instruction can result in death, serious injury or equipment damage.

Full View



Note

The metal locking thrust washer (C) is required to ground the 9001K operator per IEC 1131-2.

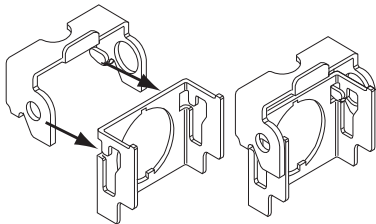
Shackle size: 1/8 in. to 3/8 in.
 (3 mm to 10 mm) dia.

Legend

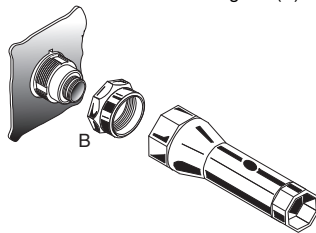
A. KR11 operator	E. lockout attachment	K. plastic legend plate (KN2)
B. ring nut (K41)	F. compensating gaskets	L. alignment tab
C. locking thrust washer	G. panel	M. ring nut wrench (K95)
D. trim washer	J. metal legend plate (KN2 or KN3)	P. padlock (not included)

Installation

- ① Assemble the lockout attachment (E).



- ② Remove the ring nut (B).



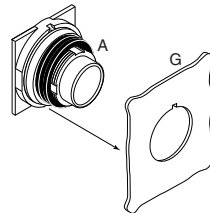
- ③ Select the number of gaskets (F).

NOTE: At least one gasket must be in place at all times to ensure a proper oil-tight seal.

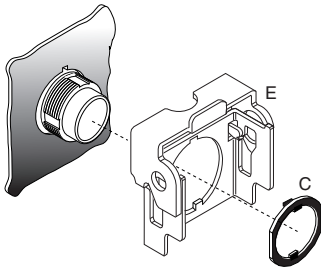


Panel thickness in. (mm)	No. of gaskets
1/16 (1.6)	3
1/8 (3.2)	2
3/16 (4.8)	1

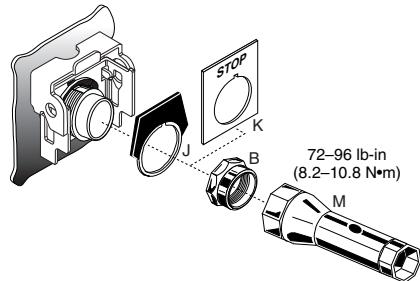
- ④ Mount onto the panel (G).



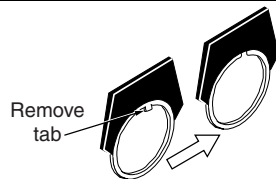
- ⑤ Install the lockout attachment (E) and the locking thrust washer (C).



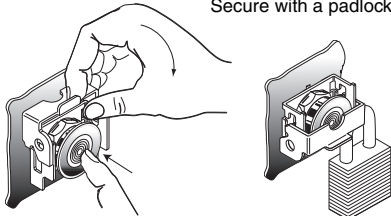
- ⑥ Install the legend plate (J or K) and the ring nut (B).



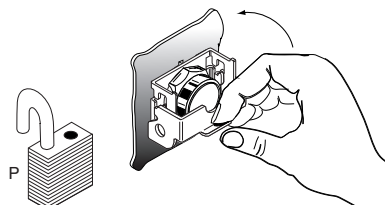
NOTE: When using old-style legend plates, remove the tab with pliers before installing the legend plate onto the operator.



To lock, fully depress the operating button then lift and rotate the movable bracket over the button.
Secure with a padlock (P).



To unlock, remove the padlock (P) then lift and rotate the movable bracket over the operating button.



Schneider Electric USA, Inc.
8001 Knightdale Blvd.
Knightdale, NC 27545 USA
1-888-SquareD (778-2733)
www.schneider-electric.us

Electrical equipment should be installed, operated, serviced, and maintained only by qualified personnel. No responsibility is assumed by Schneider Electric for any consequences arising out of the use of this material.