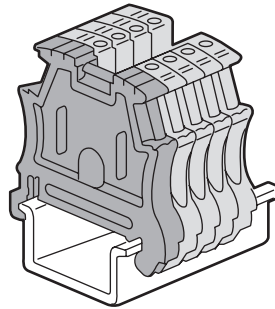


Viking 3 End stops

Cat. Nos: 375 10/11/12/13



1. GENERAL CHARACTERISTICS

The Viking 3 end stops fitted at the ends of the blocks enables a perfect coherence of the terminal blocks.

2. RANGE

Cat. Nos	375 10	375 11	375 12	375 13
Pitch (mm)	6	8	10	12
For rails	┌ Depth 15 mm			
	┌ EN 60715 - Depth 7.5 mm ^(*) and 15 mm			
Fixing	Without screw	With screws		

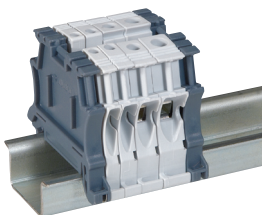
^(*)Except end stop Cat. No. 375 12 fixed on plate.

→ Cat. No. 375 10

Screwless mounting for the end stop Cat. No. 375 10.



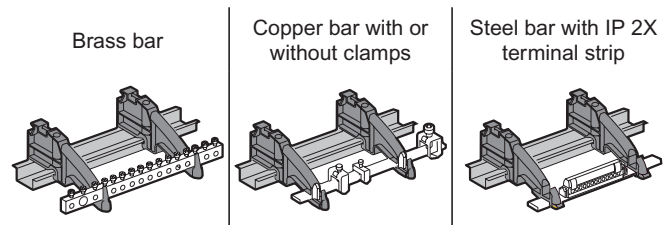
The end stop Cat. No. 375 10 can also be used as an end cap for Viking 3 screw connection blocks with 1 entry / 1 outlet and pitch from 5 to 10 mm.



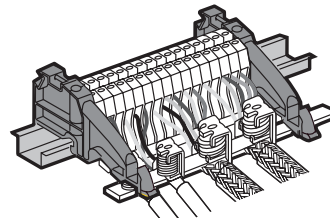
2. RANGE (continued)

→ Cat. No. 375 12

End stop Cat. No. 375 12 is used to support a protection or shielding bar.



Bar with shielding clamps.



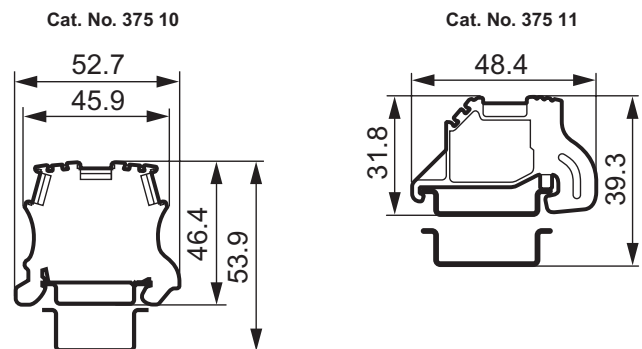
3. TECHNICAL CHARACTERISTICS

Tightening torque: 1.4 Nm max. (screwdriver blade Ø 4 mm).

Dark grey polyamide V2 according UL 94.

Self-extinguishing: 650°C Cat. No. 375 11/12 - 960°C Cat. No. 375 10/13 according to IEC EN 60695-2-11.

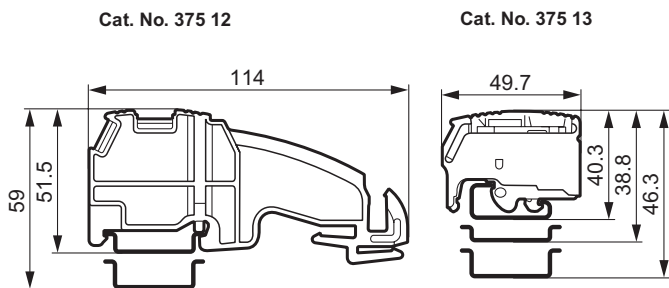
4. DIMENSIONS



Viking 3 End stops

Cat. Nos: 375 10/11/12/13

4. DIMENSIONS (continued)

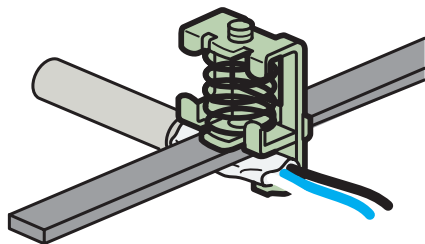


5. ACCESSORIES

5.1 Bar for end stop Cat. No. 375 12

Cat. No	Designation
373 00	Brass bar: length 416 mm, section 12 x 6.5
373 01	Brass bar: length 456 mm, section 12 x 6.5
373 02	Copper bar: 12 x 4 mm with clamps
373 49	Non perforated copper bar: 12 x 4 mm
373 89	Copper bar with tapped holes: 12 x 4 mm
048 19	Steel flat bar 12 x 2 mm for IP 2X terminal block
375 34	Shielding bar: 10 x 3 mm - Steel

The shielding clamps Cat. Nos 375 30/31/32 enable to realize a shielding terminal with the bar Cat. No. 375 34.



5. ACCESSORIES (continued)

5.2 Marking

End stop Cat. Nos	375 10	375 11	375 12	375 13
Number of marking areas	3	1	2	2

→ Label holder Cat. No. 395 96

Fixing on end stops Cat. Nos 375 10/11.
With variable angle.

Transparent polycarbonate.

Supplied with label 32 x 9.5 mm.

Accept the label for engraving Cat. No. 395 97.



→ Duplix label holder Cat. No. 384 91

Fixing on end stop Cat. No. 375 13

Can be labelled, after cutting out the upper divider.



→ CAB 3 markers (international colour code digits, letters, conventional symbols).

Terminal block marking capacity:

- 4 x CAB 3 markers - 0.15 to 0.5 mm² - up to 7 markers with marker holder Cat. No. 383 92.

- 4 x CAB 3 markers - 0.5 to 1.5 mm² - up to 6 markers with marker holder Cat. No. 383 92.

(3 markers for the end stop 375 10).



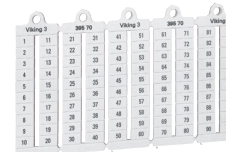
→ Pre-printed markers

Provided as pre-cut plates.

Pitch from 5 to 8 mm.

Digits and numbers,

Horizontal and vertical reading.



→ Blank markers Cat. Nos 395 00/01/02

Provided as pre-cut plates.

Pitch from 5 to 8 mm.

Manual permanent marking

with black felt-tip pen Cat. No. 395 98

or digital marking thanks

to the Logicab 2 plotter kit.



→ Blank markers Cat. Nos 387 43/44

Fixing on end stop Cat. No. 375 10.

Provided as pre-cut plates.

Pitch from 5 to 6 mm.

Digital marking thanks

to the Logicab 2 plotter kit.

