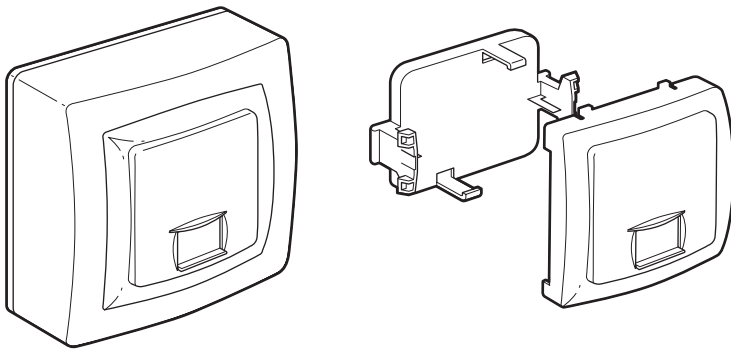


# Numeris RJ 45 socket

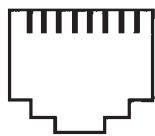
Catalogue number(s) : 860 33 - 861 33



CONTENTS	Page
1. General features .....	1
2. Overall dimensions .....	1
3. Mounting .....	1
4. Technical features.....	1
5. Connection.....	1-2
6. Performance .....	2

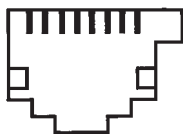
## 1. GENERAL FEATURES

Category 4 RJ 45 socket for connecting telecommunication equipment (ISDN category 4 with module 860 33)



RJ 45 ISO 88 77  
8 contacts

Cat. No. 860 33

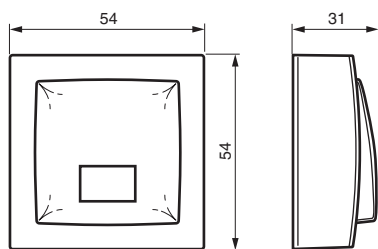


RJ 45 ISO 101 73  
9 contacts

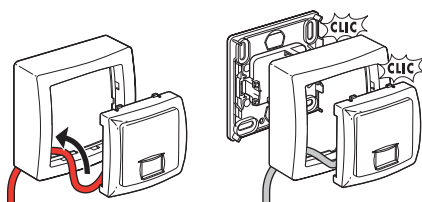
Cat. No. 861 33

## 2. OVERALL DIMENSIONS (mm)

Supports

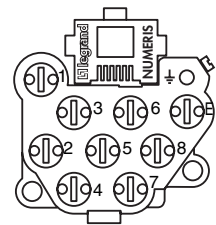


## 3. MOUNTING



## 4. TECHNICAL FEATURES

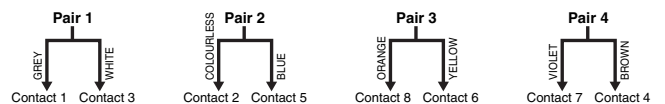
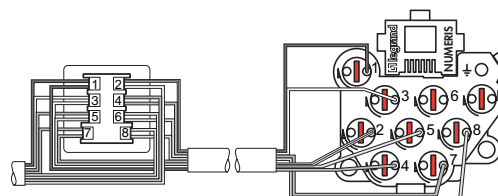
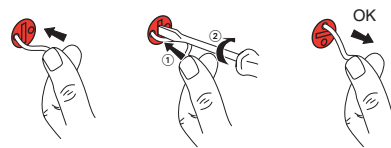
Modular Jack type ISO 8877  
Insulation displacement contacts (IDC)  
Permissible conductors Ø 0.4-0.8 mm (AWG 20-26)  
Earth terminal 2,5 mm<sup>2</sup>  
Storage and use temperature : -25°C to +70°C



## 5. CONNECTION

### 5.1 Direct modem connection

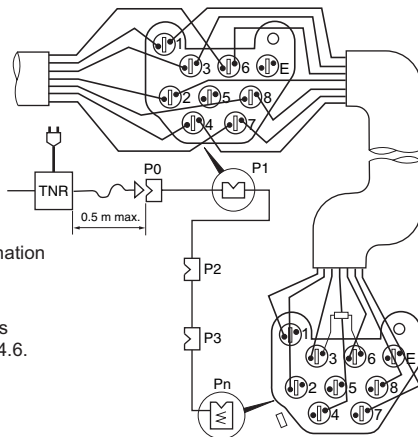
IDC with 1/4 turn (K 10 mechanism)  
Permissible conductors Ø 0.4-0.8 mono and multi-strand, AWG 26 to AWG 20, max Ø on insulation 1.4  
Tapping possible  
Max. number of connection operations possible : 20  
As a precaution, recut the wire after each operation



## 5. CONNECTION (continued)

### 5.1 Direct modem connection (continued)

ISDN connection (France)



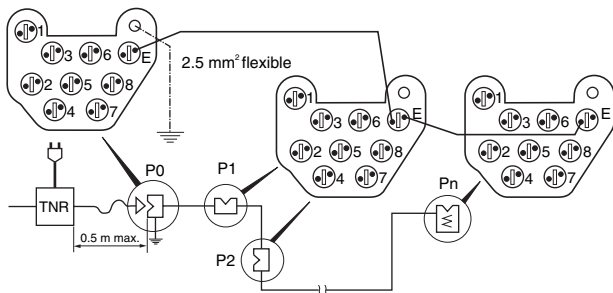
TNR = Digital Network Termination

France-Télécom specifications  
Unshielded cable series 278.4.6.

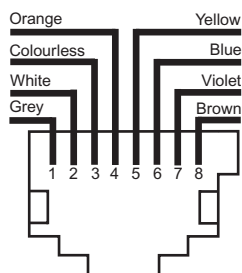
\* 100 Ω - 0.5 W- 5 %

1	2	3	4	5	6	7	8
Grey	White	Colourless	Orange	Yellow	Blue	Violet	Brown

In disturbed environments, use a shielded cable, e.g. type 278.4.6. and connect the shield to earth.



### 5.2 Usual connection of RJ 45 s



France Télécom Corel

## 6. PERFORMANCE

Category 4 socket (20 MHz / 16 Mbps / 44 dB) not enabling high speed transmissions (use Cat. Nos. 742 55/56/58).