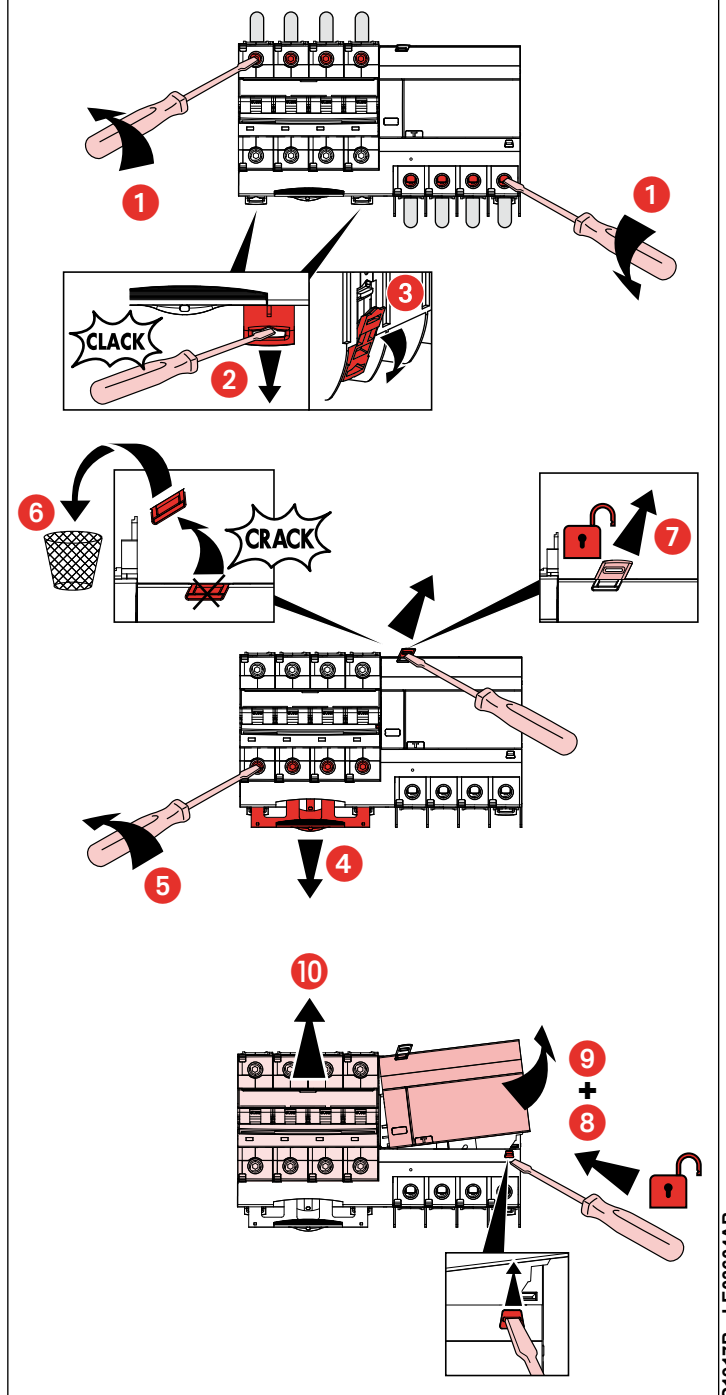
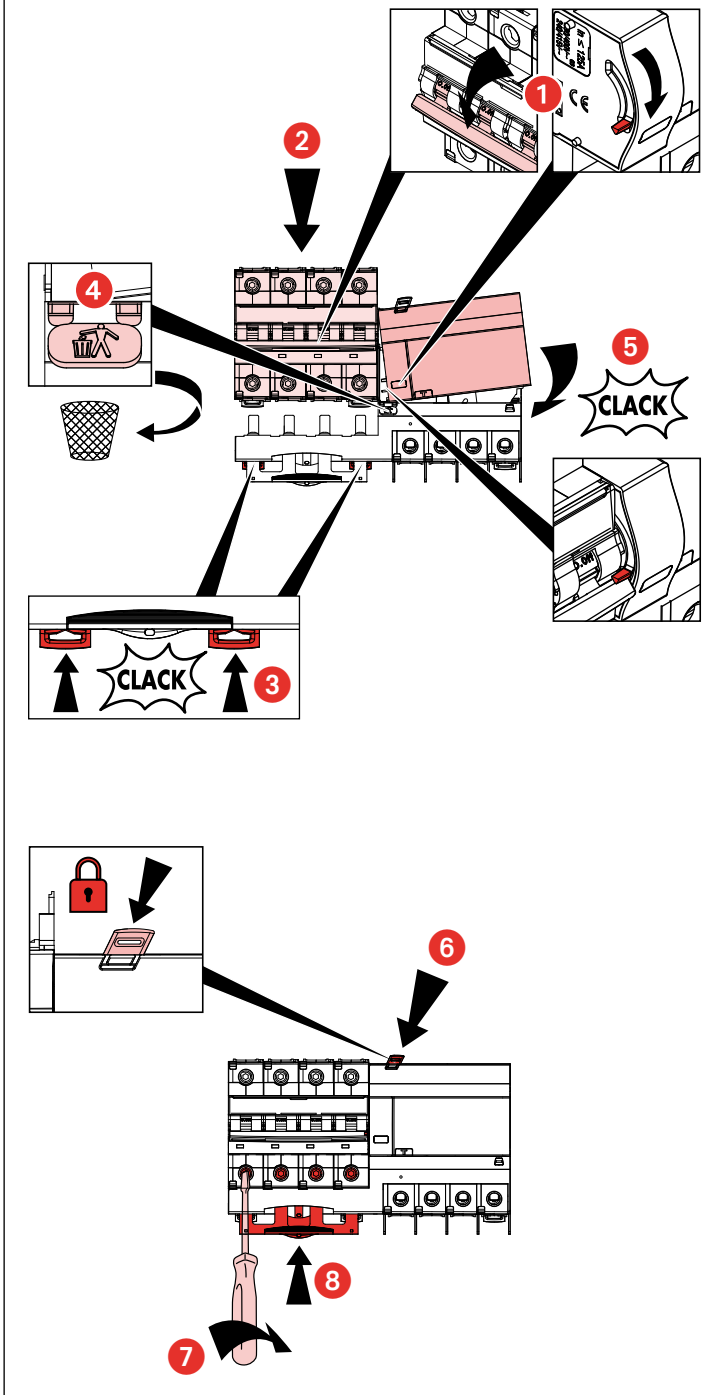
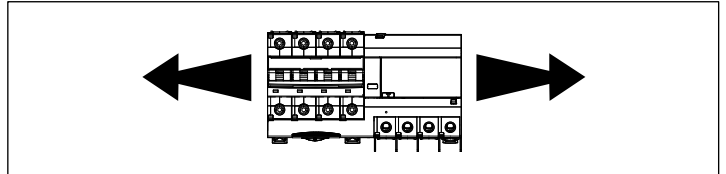
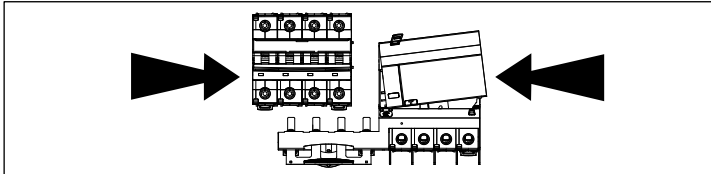


 17 mm	≤ 63 A	≤ 125 A
	1.5 - 35 mm ²	10 - 50 mm ²
	1.5 - 35 mm ²	10 - 50 mm ²
1.5 - 50 mm ²	10 - 70 mm ²	
	 6.5 mm - Pz 2 3 Nm	 4 mm 5.5 Nm



G1917B - LE03604B

