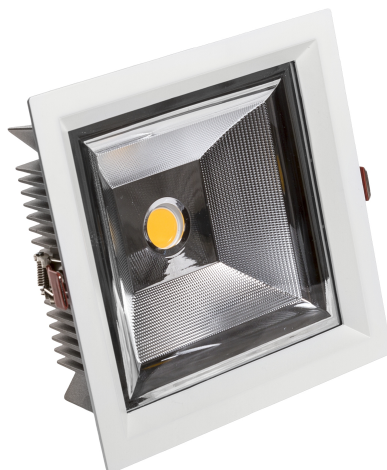



CEL SARGASA 930 27W 230V 60ST WHITE



Power	27 W	Voltage	230 V
Colour temperature	3000 K	Colour of light	WW
Beam angle	60 °	Degree of protection (IP)	IP20



 Declaration of Conformity

CEL23PRO2793060W

Technical data:

Code	WOJP00740
Power	27 W
Nominal current	129.1 mA
Voltage	230 V
Energy efficiency class	F
Energy consumption	27 kWh/1000h
Frequency	50HZ Hz
Protection class	II
Power supply included	+
Manufacturer of power supply	TCI
Power factor	0.93
Useful luminous flux*	3105 lm (360°)
Luminous flux**	3240 lm (360°)
Lamp efficacy	115 lm/W
Colour temperature	3000 K
Colour of light	WW
Beam angle	60 °
RA	90
Light source included	+
Producer of LED diodes	CREE
Uniformity of color SDCM max	3
Dimmable	OPC
Working temperature range	-20/+40 °
Lifespan	50000 h
Housing material	Aluminum
Degree of protection (IP)	IP20
Colour	White
Dimension (AxBxC)	210x210x73 mm
Mounting hole	195x195 mm
Weight	1.76 kg
For use	Inside
Assembly method	Recessed
Application	Inside
Made in	PL



*applies to the LED source used. **Luminaire luminous flux