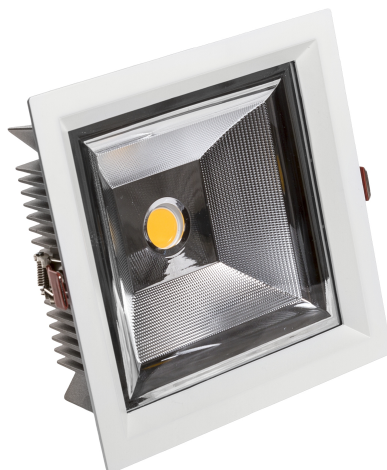


CEL SARGASA 840 19W 230V 60ST WHITE



CE

Power	19 W	Voltage	230 V
Colour temperature	4000 K	Colour of light	Neutral white
Beam angle	60 °	Degree of protection (IP)	IP20



 Declaration of Conformity

CEL23PRO1984060W

Technical data:

Code	WOJP00738
Power	19 W
Nominal current	90.9 mA
Voltage	230 V
Energy efficiency class	D
Energy consumption	19 kWh/1000h
Frequency	50HZ Hz
Protection class	II
Power supply included	+
Manufacturer of power supply	TCI
Power factor	0.93
Useful luminous flux*	2850 lm (360°)
Luminous flux**	2280 lm (360°)
Lamp efficacy	150 lm/W
Colour temperature	4000 K
Colour of light	Neutral white
Beam angle	60 °
RA	80
Light source included	+
Producer of LED diodes	CREE
Uniformity of color SDCM max	3
Dimmable	OPC
Working temperature range	-20/+40 °
Lifespan	50000 h
Housing material	Aluminum
Degree of protection (IP)	IP20
Colour	White
Dimension (AxBxC)	210x210x73 mm
Mounting hole	195x195 mm
Weight	1.76 kg
For use	Inside
Assembly method	Recessed
Application	Inside
Made in	PL



*applies to the LED source used. **Luminaire luminous flux