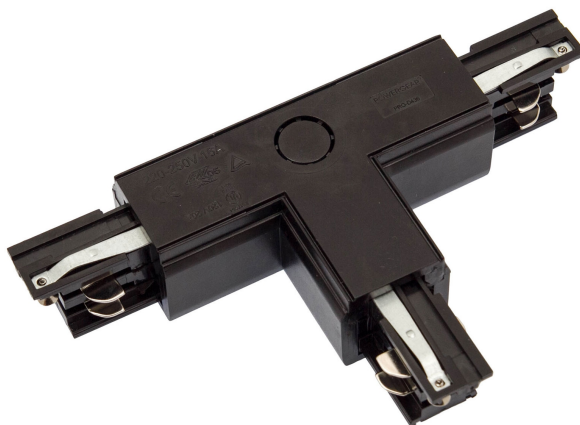


SPS connector T left, white SPECTRUM



---

Voltage **230 V**  
Dimension (AxBxC) **166x99,5 mm**

Degree of protection (IP) **IP20**  
Weight **0.159 kg**

---

Technical data:

Code	WOJ+03056
Voltage	230 V
RA	80
Uniformity of color SDCM max	5
Working temperature range	-20/+40 °
Degree of protection (IP)	IP20
Dimension (AxBxC)	166x99,5 mm
Weight	0.159 kg
For use	N,A
Application	INT
Made in	PRC



\*applies to the LED source used. \*\*Luminaire luminous flux