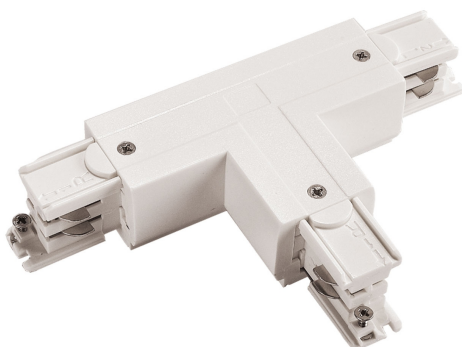


SPS connector T2 left, white SPECTRUM



CE

Voltage **230 V**

Degree of protection (IP) **IP20**

Dimension (AxBxC) **166x99,5 mm**

Weight **0.158 kg**

Technical data:

Code	WOJ+03235
Voltage	230 V
RA	80
Uniformity of color SDCM max	5
Working temperature range	-20/+40 °
Degree of protection (IP)	IP20
Colour	White
Dimension (AxBxC)	166x99,5 mm
Weight	0.158 kg
For use	N,A
Application	INT
Made in	PRC



*applies to the LED source used. **Luminaire luminous flux